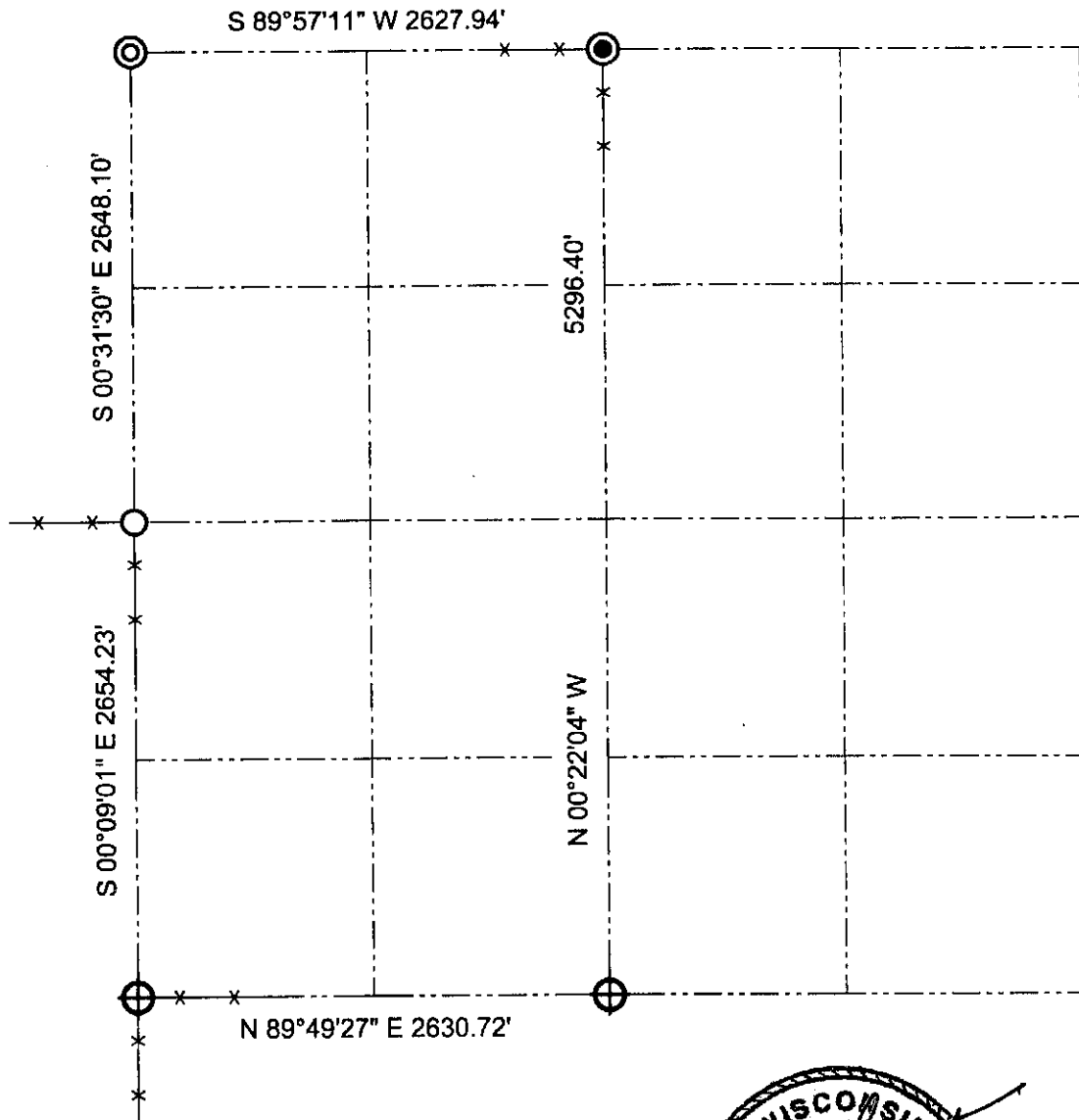






# GRANT COUNTY SECTION SUMMARY

$\frac{29}{\text{SECTION}} - \frac{7N}{\text{TOWN}} - \frac{4W}{\text{RANGE}}$



### LEGEND

-  Number 8 rebar found with Grant County Aluminum Cap
-  Number 6 rebar found with Grant County Aluminum Cap
-  Number 6 rebar found with cap
-  Cast Aluminum monument found

**NOTE:**  
Relationships of all section corners to other section corners shall be shown hereon by bearing and distance or grid coordinates.  
-Bearing reference below-



Bearings referenced to the South line of the SW Quarter of Section 29, which is assumed to bear N 89°49'27" E.

**AUSTIN ENGINEERING, LLC**  
4211 HWY 81 E, LANCASTER, WI 53813  
PHONE 608-723-6363 FAX 608-723-6702

FIELDBOOK: SDR33, 2006  
G:\T7NR4W\32A  
C:\SC14\SWA\TIE\T7NR4W\30SUM

DRAWN BY: SW AUSTIN  
APPROVED: LL AUSTIN  
CREW: BS - SB - SA - TF