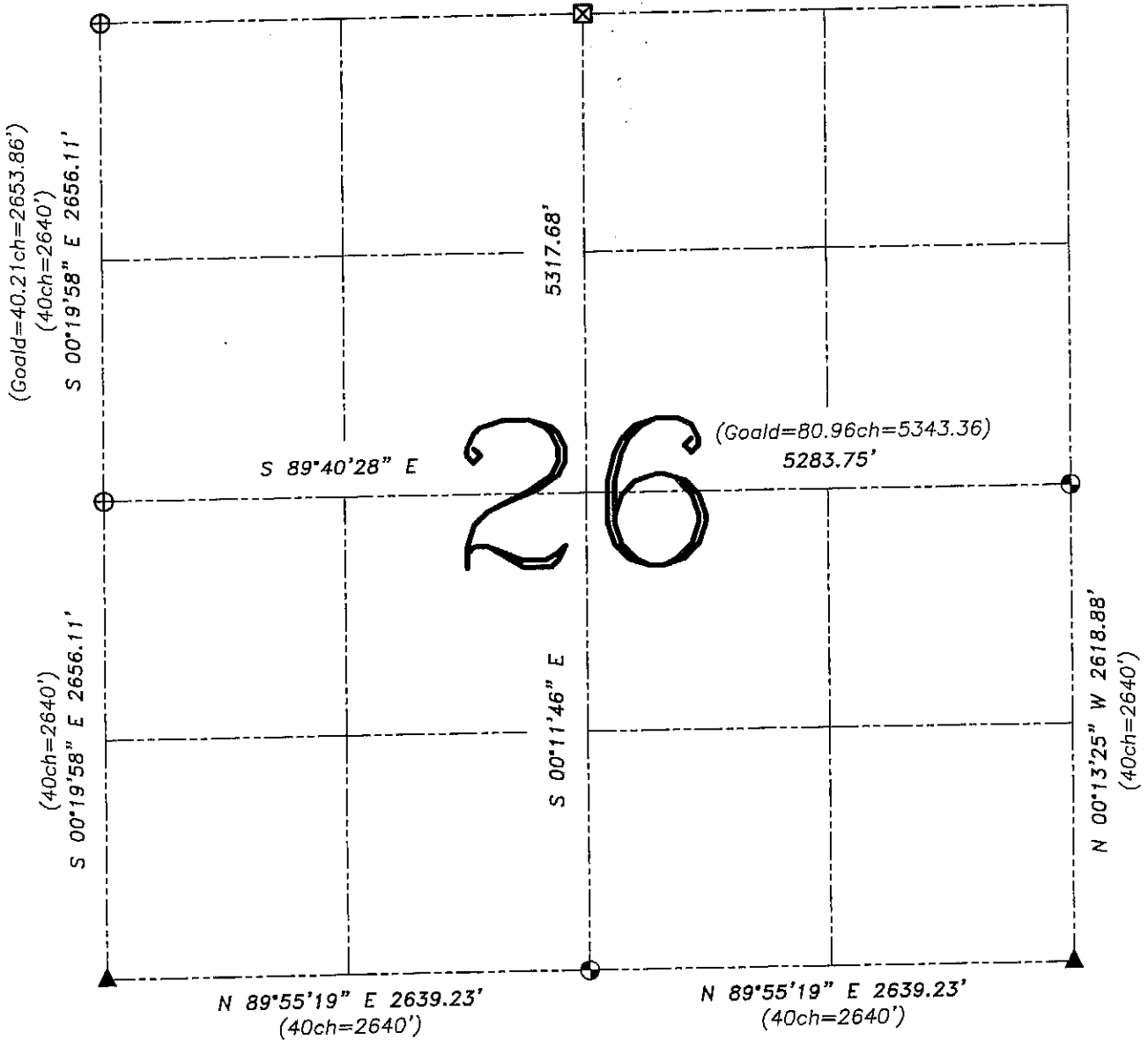


U.S. PUBLIC LAND SURVEY MONUMENT RECORD – GRANT COUNTY, WI

Summary of Section 26, Town 7 North, Range 4 West, Town of Woodman

(Scott=40.20ch=2653.20')
 (39.815ch=2627.79')
 S 89°48'11" W 2651.90'



LEGEND

- ⊕ No. 8 rebar found with Grant County Aluminum Cap
- ⊙ No. 8 x 30" rebar set with Grant County Aluminum Cap – wt=2.67#/l.f.
- ▲ 2" diameter iron pipe found
- ⊠ Stone monument found
- () Recorded as
- x Approximate location of existing fence

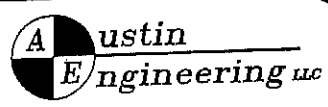
Relationship of all section corners to other section corners shall be shown hereon by bearing and distance or grid coordinates. Bearing reference shown below.

Dated this 8th day of December, 2004



Bearings referenced to the East-West Quarter line of this Section, which is assumed to bear S 89°40'28" E.

SKETCH NOT TO SCALE



4211 HWY 81 E, LANCASTER, WI 53813
 PHONE 608-723-6363 FAX 608-723-6702

JOB NUMBER 04S252
 FIELDBOOK: TSDR, 2410
 G:\T7NR4W\133
 H:\TIE\T7NR4W\133

DRAWN BY: SW AUSTIN
 APPROVED: LL AUSTIN