

74114

U.S. PUBLIC LAND SURVEY MONUMENT RECORD - GRANT COUNTY, WI

Section 33, Town 7 North Range 4 West, Town of Woodman (a)

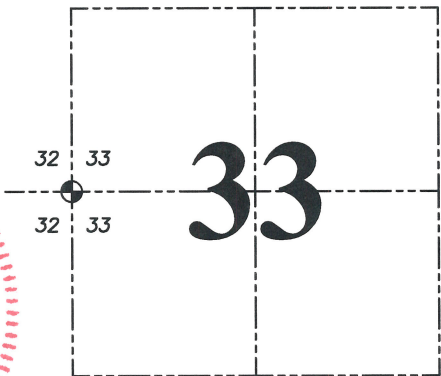
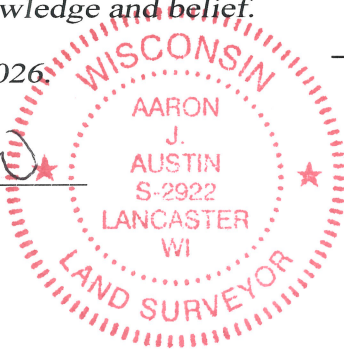
NOTE: This form is intended and designed to fulfill all requirements of the Wisconsin Administrative Code Chapter A-E 7.08, U.S. Public Land Survey Monument Record (3) (a) (b) (c) (d) (e) (f) (g) (h) (i).

CERTIFICATE: (i)

I, Aaron J. Austin, Wisconsin Professional Land Surveyor, do hereby certify that the corner location on this record was determined by me and/or under my direct supervision and that this U.S. Public Land Survey Monument Record is correct and complete to the best of my knowledge and belief.

Dated this 6th day of March, 2026.

Aaron J. Austin
Aaron J. Austin, PLS-2922



⊕ = CORNER LOCATION

Grant County Coordinates:
NAD 83 (2011)
Northing: 593,461.36
Easting: 778,055.66

HISTORY OF CORNER ESTABLISHMENT:

Original corner was set in 1833 by Harvey Parke.
Larry Austin set a 1" Rebar with a Grant County Aluminum Cap and prepared a Survey Monument Record dated 7-22-2011.

DESCRIPTION OF CORNER EVIDENCE FOUND: (b) (f) (g) (h)

I found a bent 1" Rebar Larry set. I replaced it with a 1" x 24" Rebar and set four witness corners. I verified the Monument's location with G.P.S. methods.

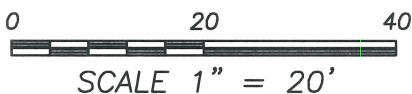
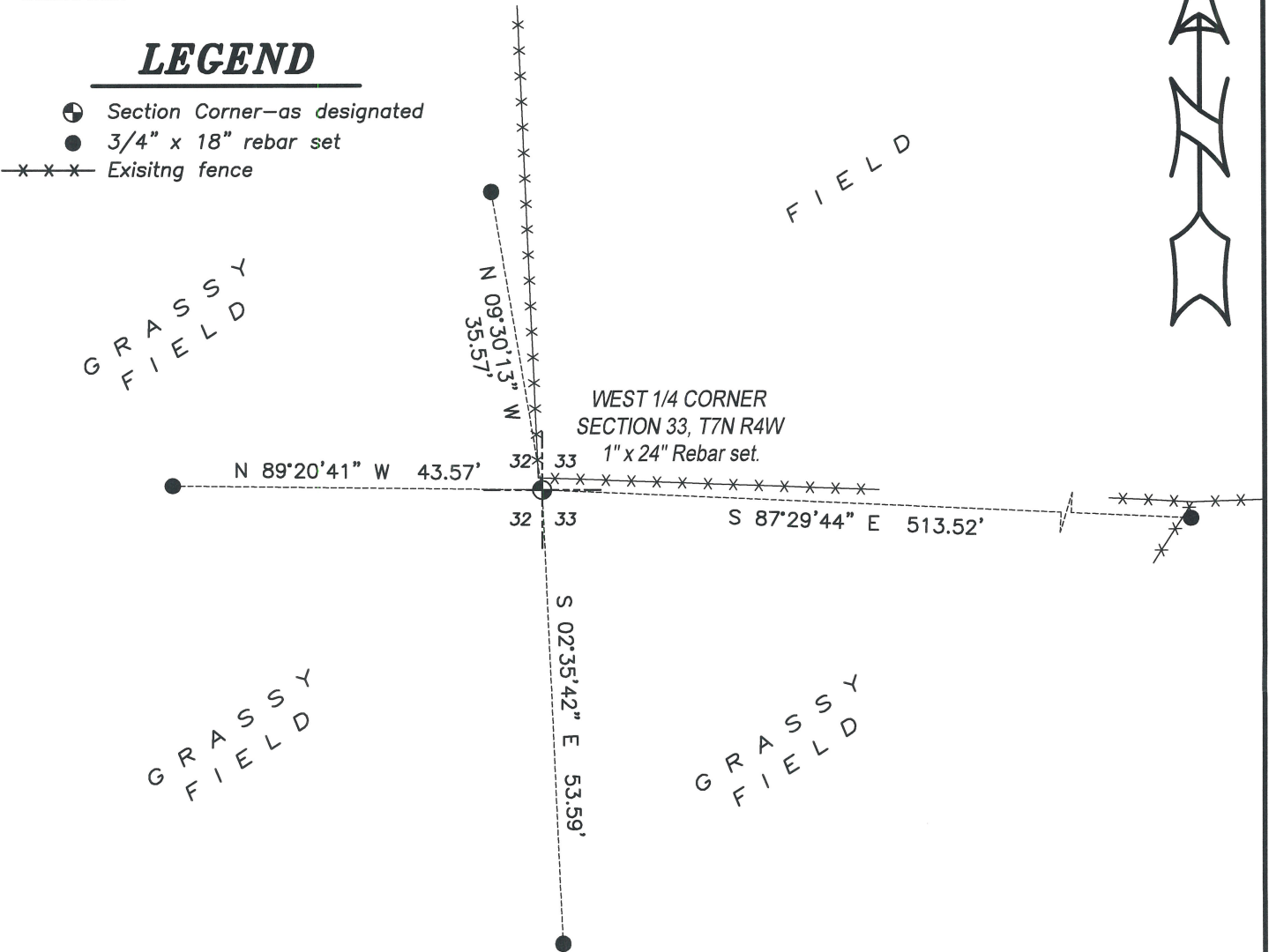
DESCRIPTION OF CORNER AND WITNESS MONUMENTS, references and accessories used to perpetuate the original or re-established location of this corner. (c) (d) (e)

Witnesses to corner location Owen Austin, Tanner Austin.
Drawn by: Owen Austin.

SKETCH:

LEGEND

- ⊕ Section Corner—as designated
- 3/4" x 18" rebar set
- x-x-x- Existing fence



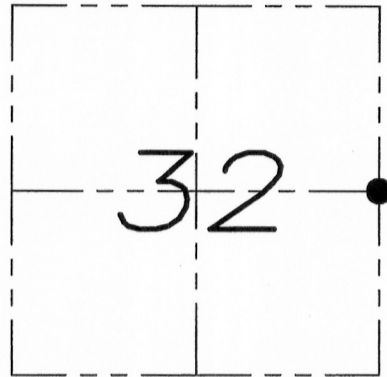
U.S. PUBLIC LAND SURVEY MONUMENT RECORD

Section 32, Town 7 North Range 4 West, Town of Woodman, Grant County, Wisconsin

CERTIFICATE

I, Larry L. Austin, do hereby certify that the corner location on this record was determined by me and/or under my direct supervision and that this U.S. public land survey monument record is correct and complete to the best of my knowledge and belief.

Larry L. Austin
 Larry L. Austin, S-1903



● = CORNER LOCATION

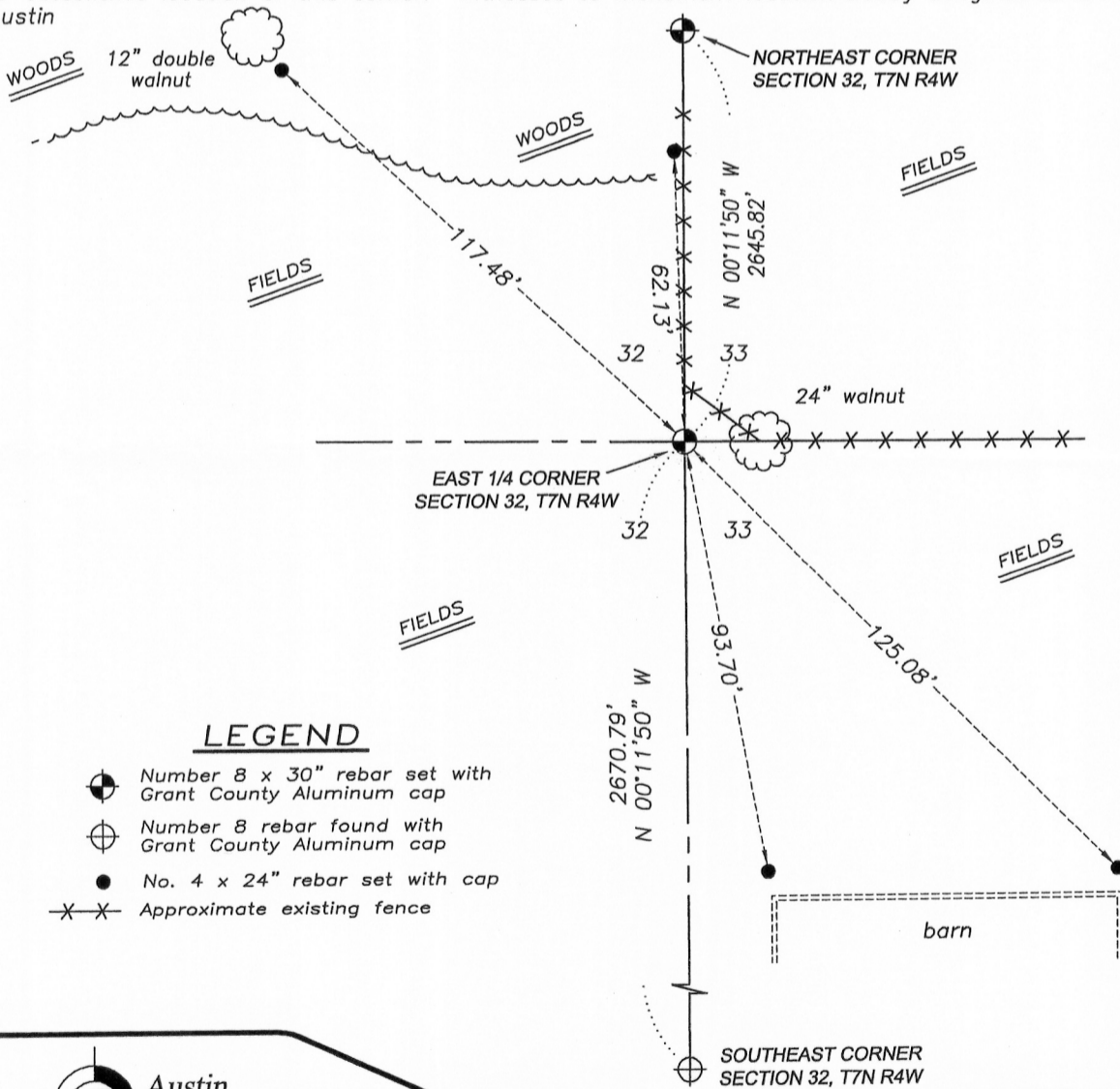
HISTORY OF CORNER

Corner was originally set in 1833 by Hervey Parke. No other record of the corner was found.

CORNER EVIDENCE FOUND

I was unable to locate any evidence of the original corner. I reset the corner based upon a straight line between the Northeast and Southeast corners of Section 32 and intersected it with the fence to the East. This fit well with the existing fence to the North. I verified this corner location by E.D.M. and G.P.S. methods.

DESCRIPTION OF CORNER AND WITNESS MONUMENTS, references and accessories used to perpetuate the original or re-established location of this corner. Witnesses to monument location Bobby Sedgwick & Brad Digman & Shane Austin



LEGEND

- Number 8 x 30" rebar set with Grant County Aluminum cap
- ⊕ Number 8 rebar found with Grant County Aluminum cap
- No. 4 x 24" rebar set with cap
- X-X- Approximate existing fence

NOT TO SCALE

Austin Engineering LLC
 austinengineeringllc.com
 4211 HWY 81 E, LANCASTER, WI 53813
 PHONE: 608-723-6363 FAX: 608-723-6702

JOB NUMBER WACHTER
 FIELDBOOK: TDSR, 9801
 G:\T7NR4W\32A
 H:\TIE\T7NR4W\95

DRAWN BY: SW AUSTIN
 APPROVED: LL AUSTIN

AUG 04 2011