

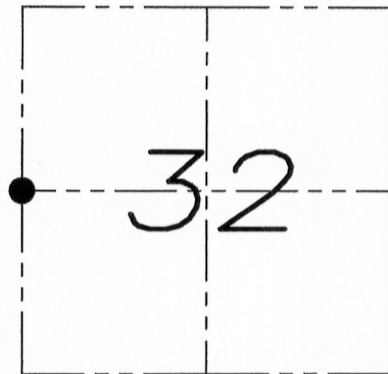
U.S. PUBLIC LAND SURVEY MONUMENT RECORD

Section 32, Town 7 North Range 4 West, Town of Woodman, Grant County, Wisconsin

CERTIFICATE

I, Larry L. Austin, do hereby certify that the corner location on this record was determined by me and/or under my direct supervision and that this U.S. public land survey monument record is correct and complete to the best of my knowledge and belief.

Larry L. Austin
 Larry L. Austin, S-1903



● = CORNER LOCATION

HISTORY OF CORNER

Corner was originally set in 1833 by Hervey Parke. In 1890 Goald set a stone at this location. No other record of the corner was found.

CORNER EVIDENCE FOUND

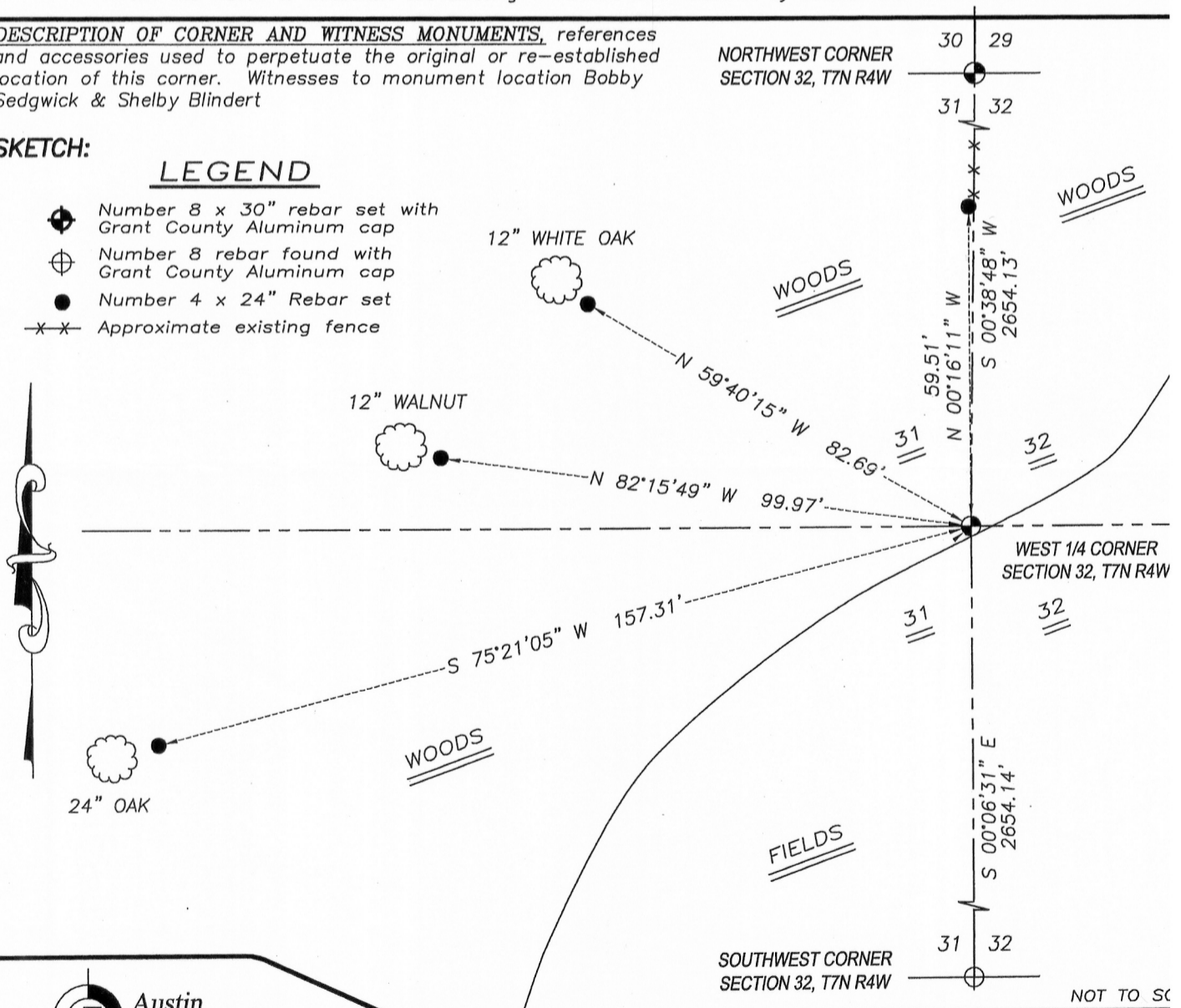
No evidence of the original corner or the Goald corner were found. I reset the corner proportionally between the Northwest and Southwest corners and used a projection of the fence from the North to establish the Easting. I verified this location by E.D.M. and G.P.S. methods.

DESCRIPTION OF CORNER AND WITNESS MONUMENTS, references and accessories used to perpetuate the original or re-established location of this corner. Witnesses to monument location Bobby Sedgwick & Shelby Blindert

SKETCH:

LEGEND

- ⊕ Number 8 x 30" rebar set with Grant County Aluminum cap
- ⊕ Number 8 rebar found with Grant County Aluminum cap
- Number 4 x 24" Rebar set
- X-X- Approximate existing fence



NOT TO SC

Austin Engineering LLC
 austinengineeringllc.com
 4211 HWY 81 E, LANCASTER, WI 53813
 PHONE: 608-723-6363 FAX: 608-723-6702

JOB NUMBER WACHTER
 FIELDBOOK: TDSR, 9801
 G:\T7NR4W\32A
 H:\TIE\T7NR4W\115

DRAWN BY: SW AUSTIN
 APPROVED: LL AUSTIN