

74112

U.S. PUBLIC LAND SURVEY MONUMENT RECORD

(AS REQUIRED BY s.A-E 7.08, WI. ADM. CODE)

HISTORY OF ORIGINAL CORNER ESTABLISHMENT AND SUBSEQUENT RESTORATIONS AND DESCRIPTION OF ANY RECORD, MONUMENT, OCCUPATION, TESTIMONIAL OR OTHER EVIDENCE CONSIDERED

The latest tie sheet was provided by Larry Austin and dated Dec. 27, 2000. The farmer Jason Sparrgrove reported that a bulldozer removed many of Austin's corners while clearing the property line for fencing. We found 5 of Austin's 17 requested corners. We were instructed to set a lath at the destroyed corners in part of the NW 1/4- NE 1/4, NE 1/4 - NE 1/4, and SE 1/4 - SE 1/4.

COORDINATES ARE ESTABLISHED TO THE CORNER AND WITNESS TIES AS SHOWN BELOW

BEARING REFERENCE AND COORDINATES ARE GRANT COUNTY COORDINATE SYSTEM
NAD 83(91) ENGLISH SYSTEM N= 596144.13 E= 770133.61

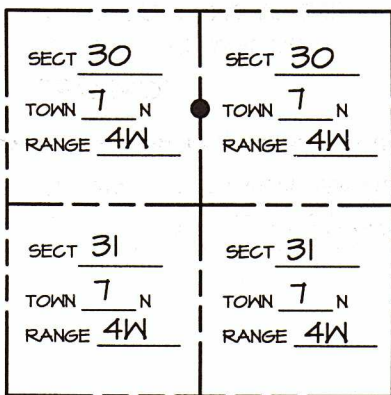
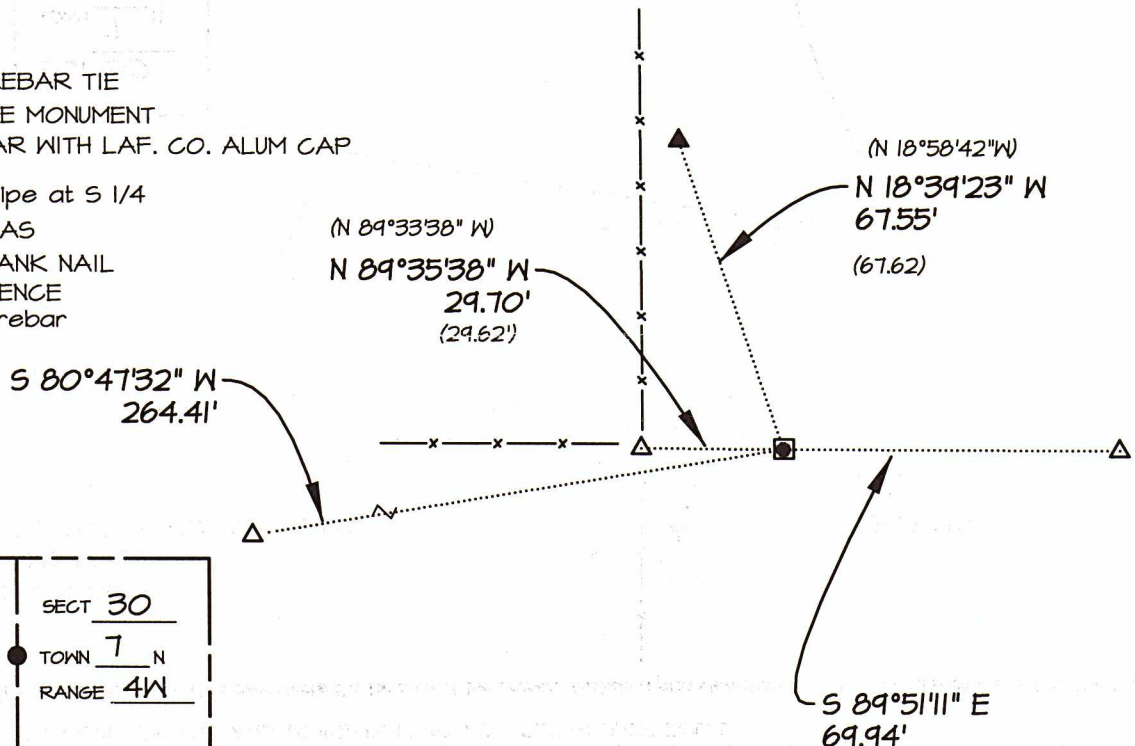
CORNER WAS: (CHECK ALL THAT APPLY)

- RESTORED THROUGH ACCEPTANCE OF AN OBLITERATED EVIDENCE LOCATION
- RESTORED THROUGH ACCEPTANCE OF A FOUND PERPETUATED LOCATION CONSIDERED A LOST CORNER AND REESTABLISHED THROUGH LOST CORNER PROPORTIONATE METHODS (INCLUDE A PLAN VIEW DRAWING SHOWING BEARING & DISTANCE TO OTHER PUBLIC LAND SURVEY CORNERS USED FOR PROPORTIONING AND DETERMINING THE CORNER LOCATION)
- RESTORED OR REESTABLISHED IN A LOCATION THAT DIFFERS FROM A PREVIOUS RESTORATION OR REESTABLISHMENT (INCLUDE A PLAN VIEW DRAWING AND INDICATE WHAT WAS SET AND/OR FOUND)

Describe the monument and accessories used to perpetuate the location of the corner. (include a plan view drawing and indicated what was set and/or found)

LEGEND:

- △ SET 5/8" φ REBAR TIE
- FOUND STONE MONUMENT
- ⊠ FOUND REBAR WITH LAF. CO. ALUM CAP
- set 1" iron pipe at S 1/4
- () RECORDED AS
- ⊗ FD. RING SHANK NAIL
- x—x— FENCE
- ▲ FOUND 3/4" rebar



- = LOCATION OF CORNER
- THE S 1/4 COR. OF SECT 30 T 7 N, R 4W
- THE ___ COR. OF SECT ___ T ___ N, R ___
- THE N 1/4 COR. OF SECT 31 T 7 N, R 4W
- THE ___ COR. OF SECT ___ T ___ N, R ___

GRANT _____ COUNTY, WISCONSIN
JOB ID: 215-51 BOOK #: 21-2 P.23

I, LAURENCE E SCHMIT CERTIFY THAT THE CORNER LOCATION SHOWN ON THIS RECORD WAS DETERMINED BY ME OR UNDER MY DIRECTION AND CONTROL AND THAT THIS U.S. PUBLIC LAND SURVEY MONUMENT RECORD IS CORRECT AND COMPLETE TO THE BEST OF MY KNOWLEDGE AND BELIEF.

Laurence E Schmit 7-19-2021
SIGNATURE DATE:

-NTS-

LAND SURVEYOR'S SEAL
INDEX NUMBER 112

GRANT COUNTY CERTIFIED LAND CORNER

CORNER NUMBER 112

CERTIFICATE:

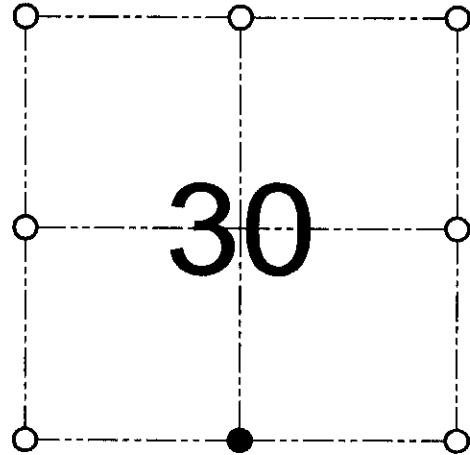
I, Larry L. Austin, do hereby certify that on the 22nd day of June, 2000, I found evidence of the South 1/4 corner of Section 30, Town 7 North, Range 4 West, of the 4th Principal Meridian, and I re-established said corner according to the Wisconsin statutes as shown and described hereon.

Dated this 27th day of December, 2000

Larry L. Austin
Larry L. Austin S-1903



SEAL



● = CORNER LOCATION

SOUTH 1/4 CORNER OF
SECTION 30, T 7 N R 4 W
TOWN OF WOODMAN

HISTORY OF ORIGINAL CORNER ESTABLISHMENT:

Corner was originally set in 1832 by Harvey Parke.
In 1890 Gould found remains of both original bearing trees.

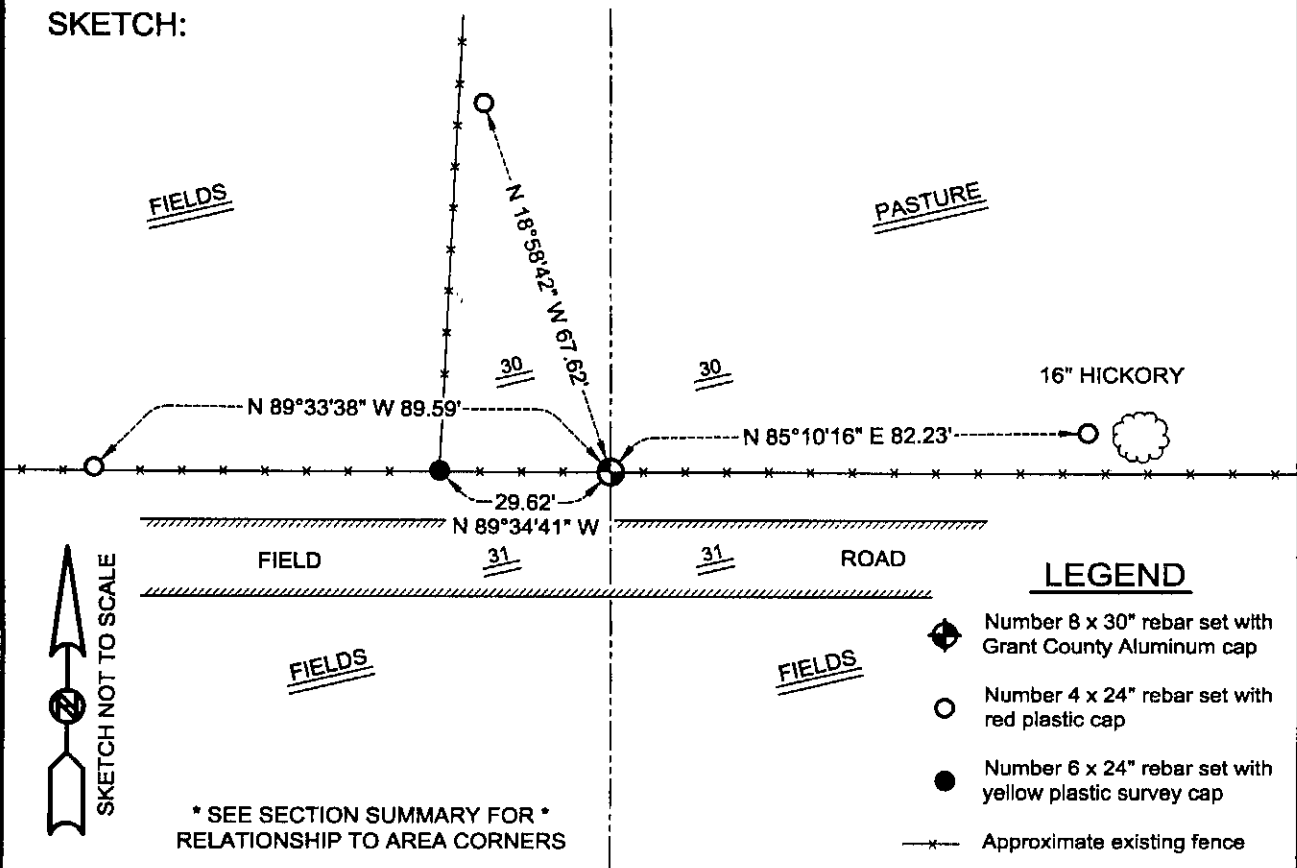
DESCRIPTION OF CORNER EVIDENCE FOUND:

I found no evidence of the original bearing trees. I did find an existing East-West fence and accepted it's location for Northing. Easting was established proportionately between the Southwest and Southeast corners of Section 30. Verified this location using EDM & GPS traverses of the area.

DESCRIPTION OF CORNER AND WITNESS MONUMENTS, references and accessories used to perpetuate the original or re-established location of this corner

WITNESS TO THE CORNER LOCATION: SHANE AUSTIN & SHELBY BLINDERT & BOBBY SEDGWICK

SKETCH:



* SEE SECTION SUMMARY FOR *
RELATIONSHIP TO AREA CORNERS

AUSTIN ENGINEERING, LLC
4211 HWY 81 E, LANCASTER, WI 53813
PHONE 608-723-6363 FAX 608-723-6702

FIELDBOOK: SDR33, 2006
G:\T7NR4W\32A
C:\SC14\SWA\TIE\T7NR4W\112

DRAWN BY: SW AUSTIN
APPROVED: LL AUSTIN
CREW: BS - SB - SA