

U.S. PUBLIC LAND SURVEY MONUMENT RECORD - GRANT COUNTY, WI

Section 27, Town 7 North Range 4 West, Town of Woodman(a)

NOTE: This form is intended and designed to fulfill all requirements of the Wisconsin Administrative Code Chapter A-E 7.08, U.S. Public Land Survey Monument Record (3) (a) (b) (c) (d) (e) (f) (g) (h) (i).

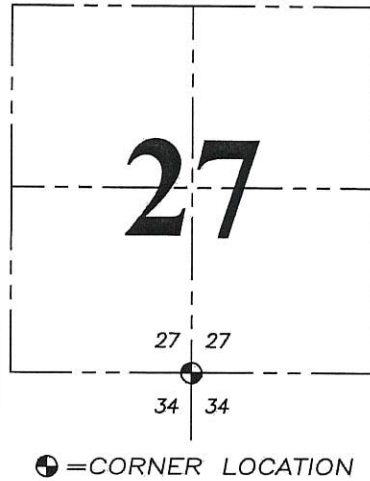
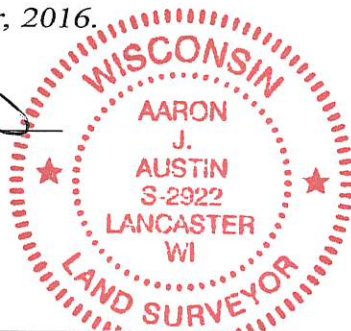
Corner No. 106

CERTIFICATE:

I, Aaron J. Austin, Wisconsin Professional Land Surveyor, do hereby certify that the corner location on this record was determined by me and/or under my direct supervision and that this U.S. Public Land Survey Monument Record is correct and complete to the best of my knowledge and belief.

Dated this 26th day of December, 2016.

Aaron J. Austin
 Aaron J. Austin, S-2922



Grant County Coordinates:
 NAD 83 (2011)
 Northing: 596,110.26
 Easting: 785,938.71

HISTORY OF CORNER ESTABLISHMENT:

Original corner was set in 1833 by Harvey Parke.
 Larry Austin reset the corner and filed a Survey Monuement Record dated March 31, 1999.

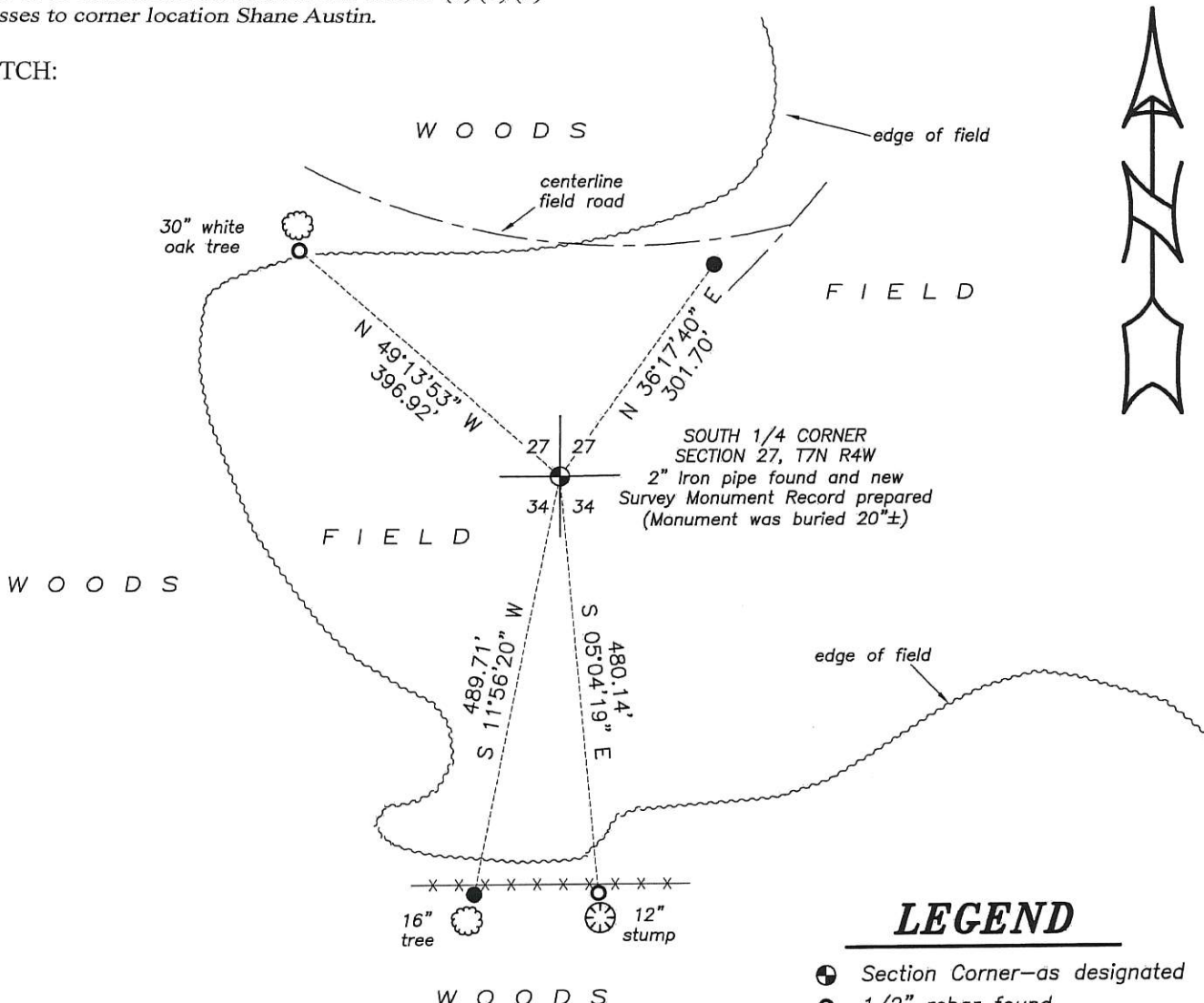
DESCRIPTION OF CORNER EVIDENCE FOUND: (b) (f) (g) (h)

The corner was found and two witness corners. I set two additional witness corners as shown below after I verified the corner's location. County Coordinates were established with G.P.S. methods.

DESCRIPTION OF CORNER AND WITNESS MONUMENTS, references and accessories used to perpetuate the original or re-established location of this corner. (c) (d) (e)

Witnesses to corner location Shane Austin.

SKETCH:



LEGEND

- Section Corner—as designated
- 1/2" rebar found
- 3/4" x 18" rebar set
- x-x- Existing fence
- ⊗ Existing tree

0 200 400

SCALE 1" = 200'

GRANT COUNTY CERTIFIED LAND CORNER

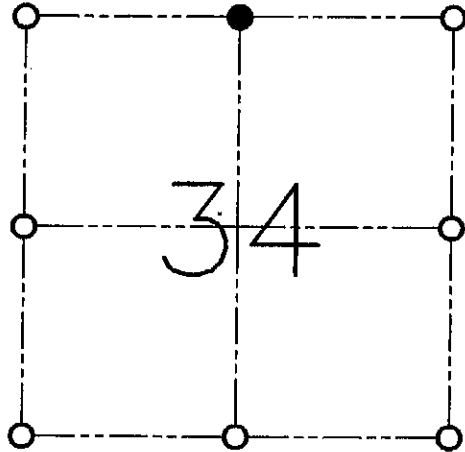
CORNER NO. 106

CERTIFICATE:

I, LARRY L. AUSTIN, DO HEREBY CERTIFY THAT ON SIXTEENTH DAY OF FEBRUARY, 1999, I FOUND MONUMENTED EVIDENCE OF THE NORTH 1/4 OF SECTION 34, TOWN 7 NORTH, RANGE 4 WEST, OF THE FOURTH PRINCIPAL MERIDIAN, AND I RE-ESTABLISHED SAID CORNER ACCORDING TO THE WISCONSIN STATUTES AS SHOWN AND DESCRIBED HEREON.

DATED THIS THIRTY-FIRST DAY OF MARCH, 1999

Larry L. Austin
LARRY L. AUSTIN S-1903



● = CORNER LOCATION

**NORTH 1/4 OF SECTION
T 7 N R 4 W
TOWN OF WOODMAN**

HISTORY OF ORIGINAL CORNER ESTABLISHMENT:

CORNER WAS SET IN 1833 BY HARVEY PARKE.

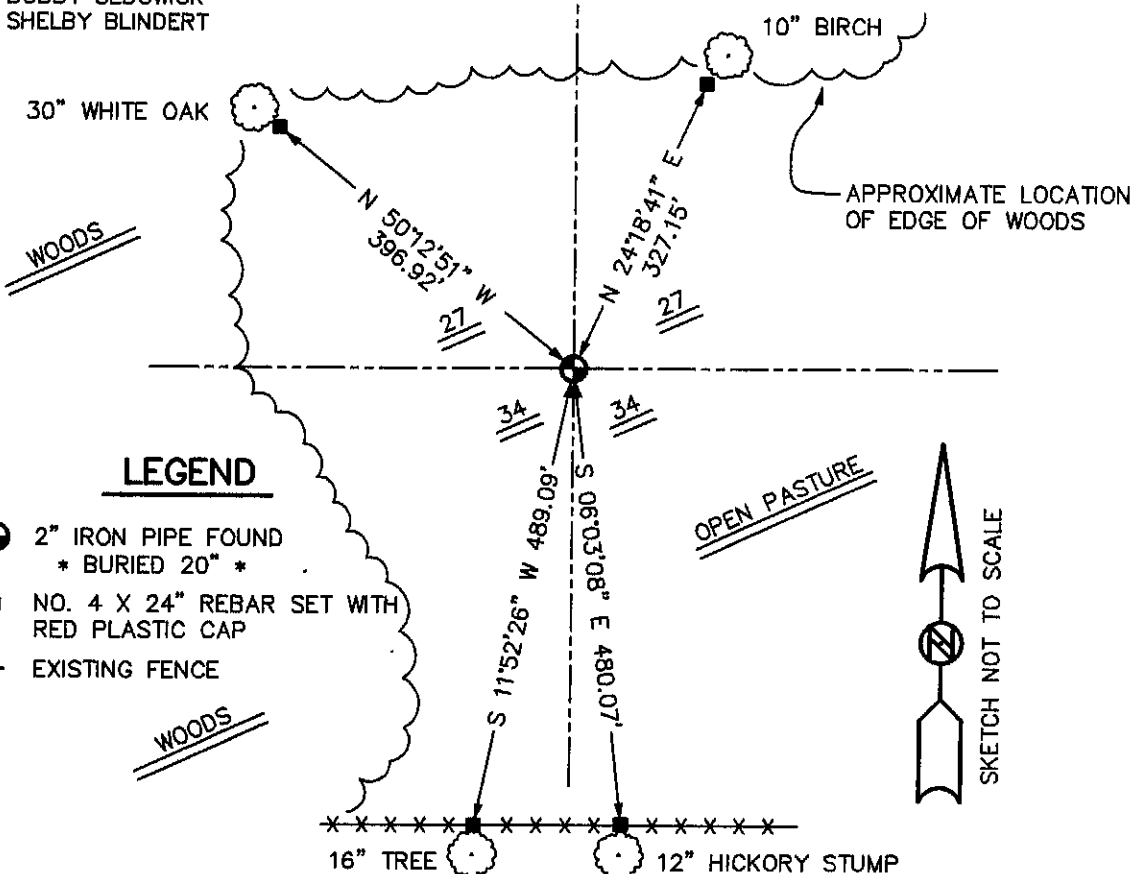
DESCRIPTION OF CORNER EVIDENCE FOUND:

I FOUND A 2" IRON PIPE SET BY ROBERT M. LAMPMAN. I ACCEPTED IT'S LOCATION AFTER AN E.D.M. TRAVERSE OF THE AREA.

DESCRIPTION OF CORNER AND WITNESS MONUMENTS, REFERENCES AND ACCESSORIES USED TO PERPETUATE THE ORIGINAL OR RE-ESTABLISHED LOCATION OF THIS CORNER:

WITNESS TO THE CORNER LOCATION:
BOBBY SEDGWICK
SHELBY BLINDERT

SKETCH:



LEGEND

- 2" IRON PIPE FOUND
- * BURIED 20" *
- NO. 4 X 24" REBAR SET WITH RED PLASTIC CAP
- *** EXISTING FENCE