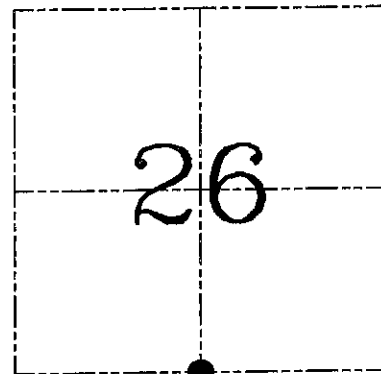
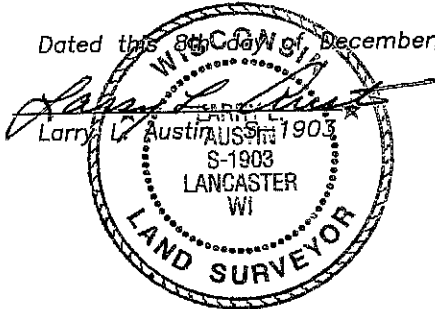


U.S. PUBLIC LAND SURVEY MONUMENT RECORD – GRANT COUNTY, WI
Section 26, Town 7 North Range 4 West, Town of Woodman

CERTIFICATE

I, Larry L. Austin, do hereby certify that the corner location on this record was determined by me and/or under my direct supervision and that this U.S. public land survey monument record is correct and complete to the best of my knowledge and belief.

Dated this 26th day of December, 2004



● = CORNER LOCATION

HISTORY OF CORNER ESTABLISHMENT

Corner was originally set in 1833 by Parke. In 1889 Goald set a stone at this location. No other record of the corner was found.

DESCRIPTION OF CORNER EVIDENCE FOUND

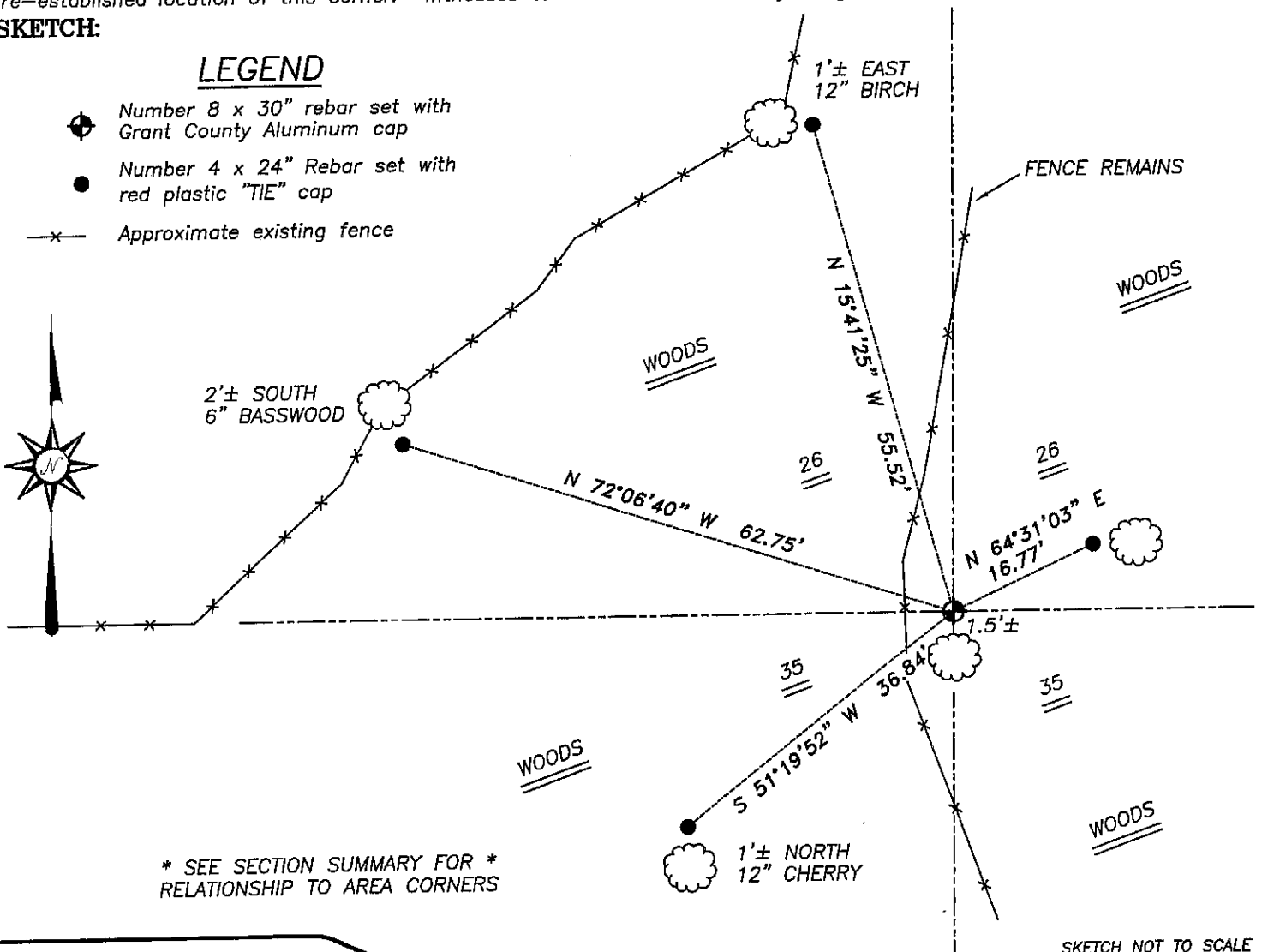
I was unable to locate Goald's stone. I reset the corner proportionately between the Southwest and Southeast corners of Section 26. Verified this location using EDM & GPS methods.

DESCRIPTION OF CORNER AND WITNESS MONUMENTS, references and accessories used to perpetuate the original or re-established location of this corner. Witnesses to corner location Bobby Sedgwick & Shelby Blindert & Brad Digman

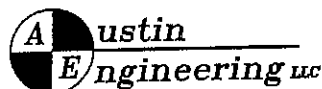
SKETCH:

LEGEND

- Number 8 x 30" rebar set with Grant County Aluminum cap
- Number 4 x 24" Rebar set with red plastic "TIE" cap
- x— Approximate existing fence



* SEE SECTION SUMMARY FOR *
 RELATIONSHIP TO AREA CORNERS



4211 HWY 81 E, LANCASTER, WI 53813
 PHONE 608-723-6363 FAX 608-723-6702

JOB NUMBER 04S292
 FIELDBOOK: TSDR, 2410
 G:\T7NR4W\133
 H:\TIE\T7NR4W\104

DRAWN BY: SW AUSTIN
 APPROVED: LL AUSTIN