

GRANT COUNTY CERTIFIED LAND CORNER

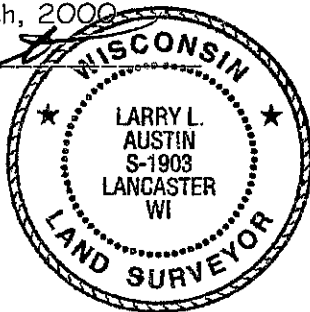
CORNER NUMBER 100

CERTIFICATE:

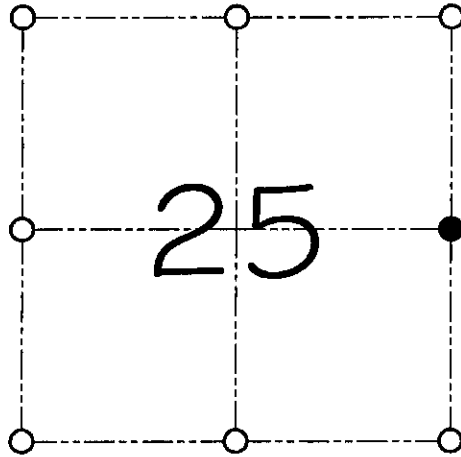
I, Larry L. Austin, do hereby certify that on the 7th day of March, 2000, I found no evidence of the East 1/4 corner of Section 25, Town 7 North, Range 4 West, of the 4th Principal Meridian, and I re-established said corner according to the Wisconsin statutes as shown and described hereon.

Dated this 22nd day of March, 2000

Larry L. Austin
Larry L. Austin S-1903



SEAL



● = CORNER LOCATION
EAST 1/4 CORNER OF
SECTION 25, T 7 N R 4 W
TOWN OF WOODMAN

HISTORY OF ORIGINAL CORNER ESTABLISHMENT:

Corner was originally set in 1832 by Sibley.
No other record of the corner was found.

DESCRIPTION OF CORNER EVIDENCE FOUND:

I found no evidence of the original corner location.
I reset the corner based on the East line of the Northeast 1/4.
Verified this location using E.D.M. & G.P.S. methods.

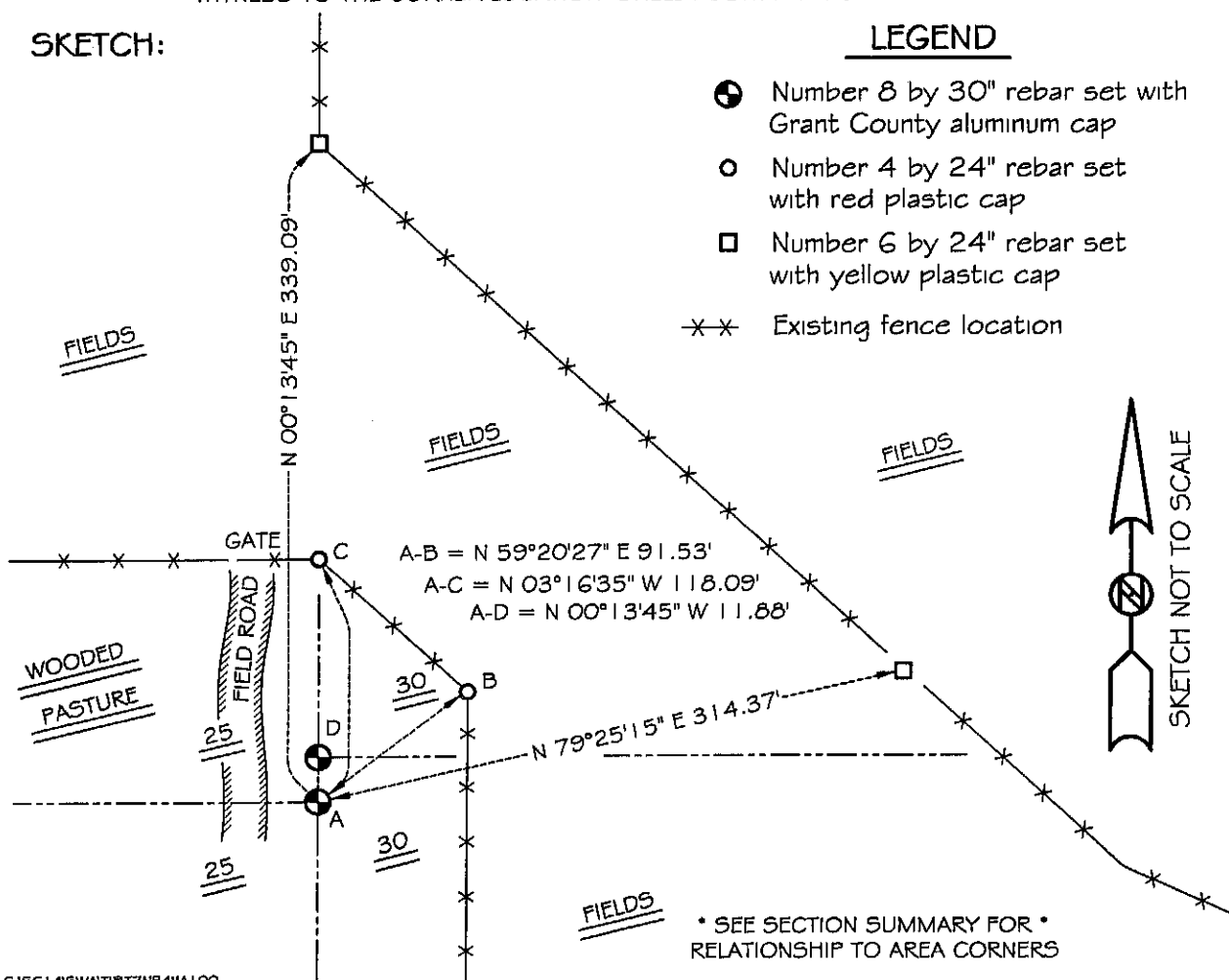
DESCRIPTION OF CORNER AND WITNESS MONUMENTS, references and accessories used to perpetuate the original or re-established location of this corner

WITNESS TO THE CORNER LOCATION: SHELBY BLINDERT & SHAWN BEHERNDS

SKETCH:

LEGEND

- Number 8 by 30" rebar set with Grant County aluminum cap
- Number 4 by 24" rebar set with red plastic cap
- Number 6 by 24" rebar set with yellow plastic cap
- ×× Existing fence location



* SEE SECTION SUMMARY FOR *
RELATIONSHIP TO AREA CORNERS