

GRANT COUNTY CERTIFIED LAND CORNER

CORNER NUMBER 90

CERTIFICATE:

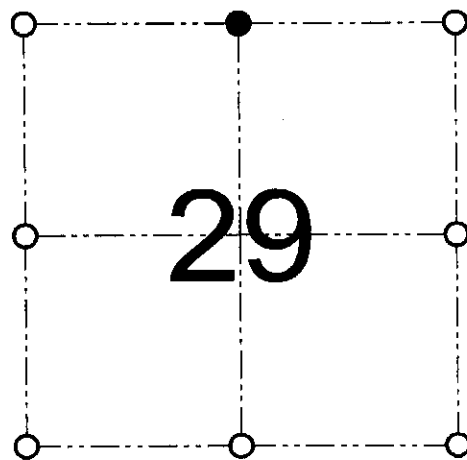
I, Larry L. Austin, do hereby certify that on the 22nd day of June, 2000, I found evidence of the North 1/4 corner of Section 29, Town 7 North, Range 4 West, of the 4th Principal Meridian, and I re-established said corner according to the Wisconsin statutes as shown and described hereon.

Dated this 27th day of December, 2000

Larry L. Austin
Larry L. Austin S-1903



SEAL



● = CORNER LOCATION

NORTH 1/4 CORNER OF SECTION 29, T 7 N R 4 W TOWN OF WOODMAN

HISTORY OF ORIGINAL CORNER ESTABLISHMENT:

Corner was originally set in 1833 by Harvey Parke.
In 1984 Paul Brashaw set a # 6 iron bar at this location.

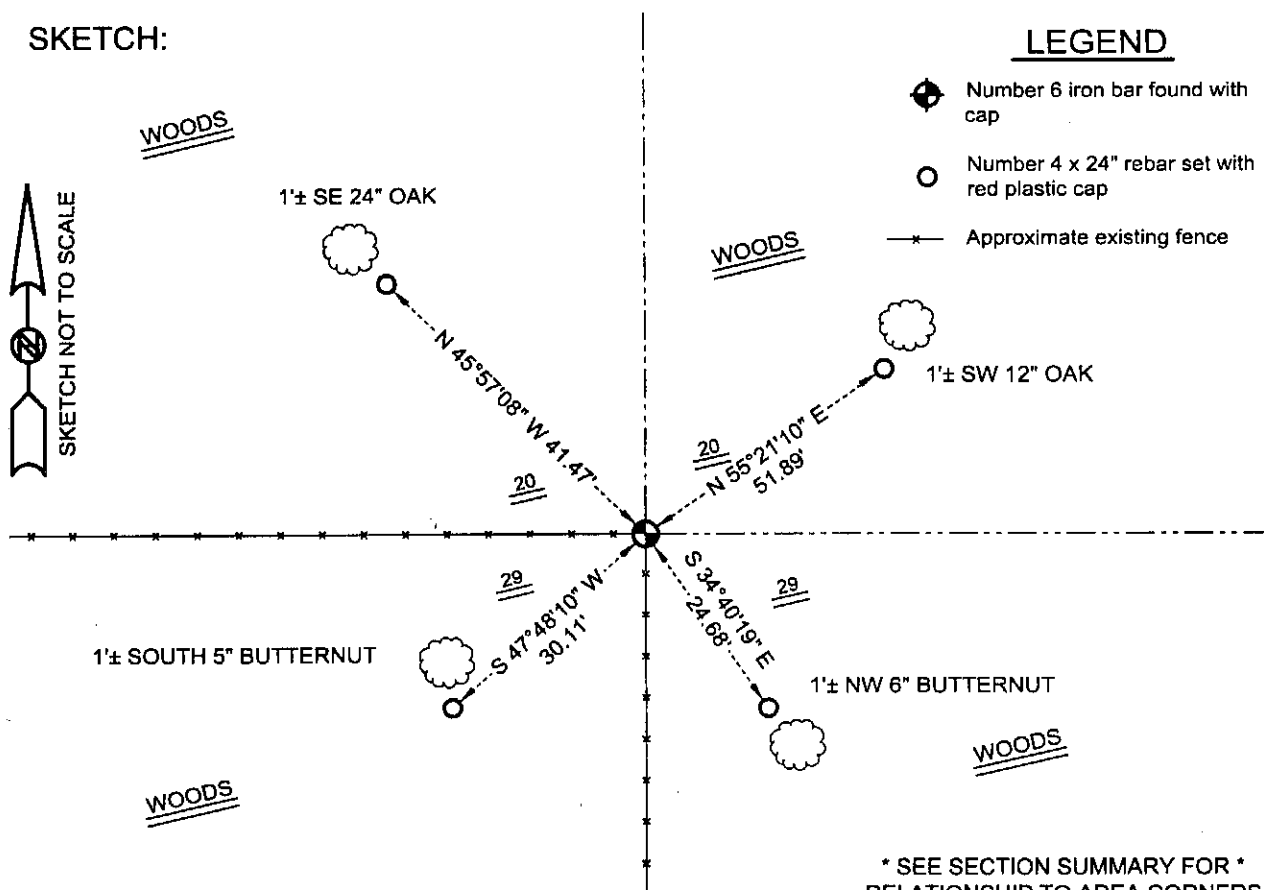
DESCRIPTION OF CORNER EVIDENCE FOUND:

I found the existing # 6 iron bar at this location and accepted it after an EDM & GPS traverse of the area.

DESCRIPTION OF CORNER AND WITNESS MONUMENTS, references and accessories used to perpetuate the original or re-established location of this corner

WITNESS TO THE CORNER LOCATION: SHANE AUSTIN & SHELBY BLINDERT & BOBBY SEDGWICK

SKETCH:



* SEE SECTION SUMMARY FOR *
RELATIONSHIP TO AREA CORNERS

AUSTIN ENGINEERING, LLC
4211 HWY 81 E, LANCASTER, WI 53813
PHONE 608-723-6363 FAX 608-723-6702

FIELDBOOK: SDR33, 2006
G:\T7NR4W\32A
C:\SC14\SWA\TIC\T7NR4W\90

DRAWN BY: SW AUSTIN
APPROVED: LL AUSTIN
CREW: BS - SB - SA