

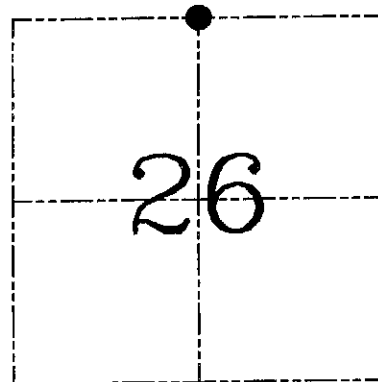
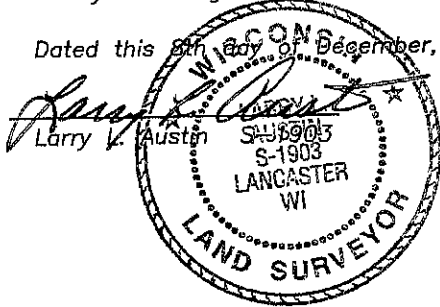
**U.S. PUBLIC LAND SURVEY MONUMENT RECORD – GRANT COUNTY, WI**

**Section 26, Town 7 North Range 4 West, Town of Woodman**

CERTIFICATE

I, Larry L. Austin, do hereby certify that the corner location on this record was determined by me and/or under my direct supervision and that this U.S. public land survey monument record is correct and complete to the best of my knowledge and belief.

Dated this 8th day of December, 2004



● = CORNER LOCATION

HISTORY OF CORNER ESTABLISHMENT

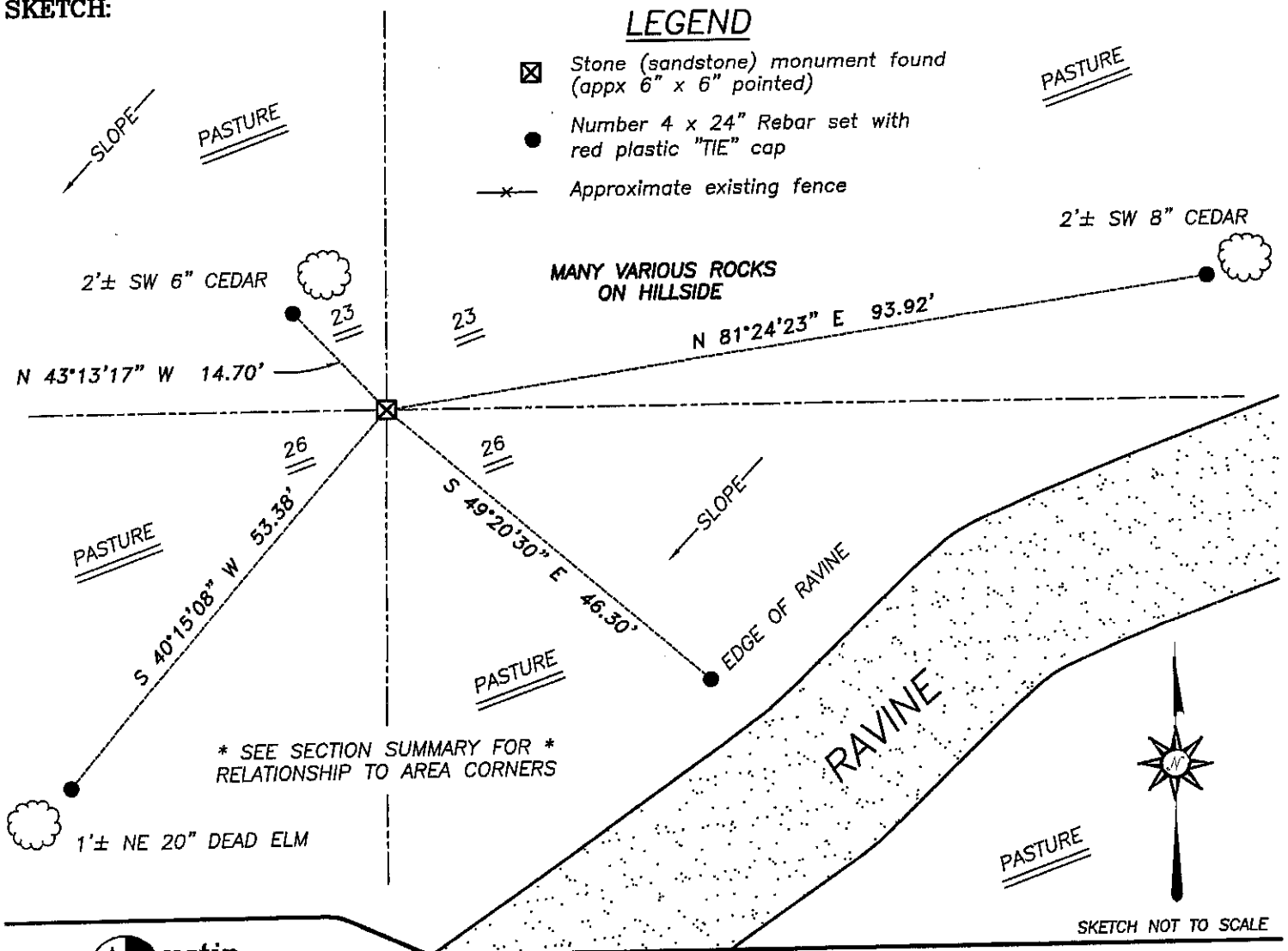
Corner was originally set in 1833 by Parke. In 1882 Scott set a stone at this location. In 1889 Goald found the corner established by Scott. No other record of the corner was found.

DESCRIPTION OF CORNER EVIDENCE FOUND

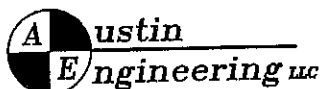
I found the stone set by Scott. I accepted it's location after an EDM & GPS traverse of the area.

DESCRIPTION OF CORNER AND WITNESS MONUMENTS, references and accessories used to perpetuate the original or re-established location of this corner. Witnesses to corner location Bobby Sedgwick & Shelby Blindert & Brad Digman

**SKETCH:**



SKETCH NOT TO SCALE



4211 HWY 81 E, LANCASTER, WI 53813  
PHONE 608-723-6363 FAX 608-723-6702

JOB NUMBER 04S292  
FIELDBOOK: TSDR, 2410  
G:\T7NR4W\133  
H:\TIE\T7NR4W\84

DRAWN BY: SW AUSTIN  
APPROVED: LL AUSTIN