

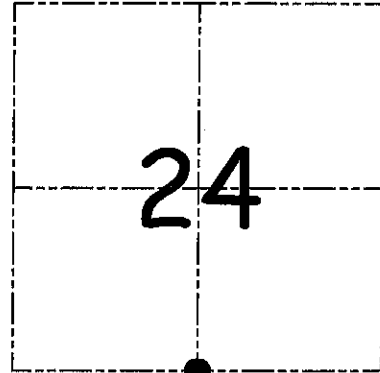
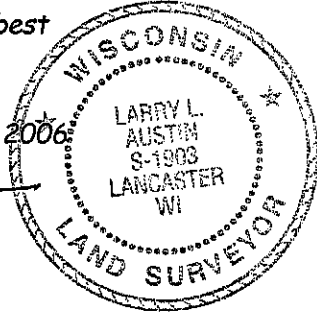
**U.S. PUBLIC LAND SURVEY MONUMENT RECORD – GRANT COUNTY, WI**  
**Section 24, Town 7 North Range 4 West, Town of Woodman**

CERTIFICATE

I, Larry L. Austin, do hereby certify that the corner location on this record was determined by me and/or under my direct supervision and that this U.S. public land survey monument record is correct and complete to the best of my knowledge and belief.

Dated this 30th day of August, 2006.

*Larry L. Austin*  
 Larry L. Austin S-1903



● = CORNER LOCATION

HISTORY OF CORNER ESTABLISHMENT

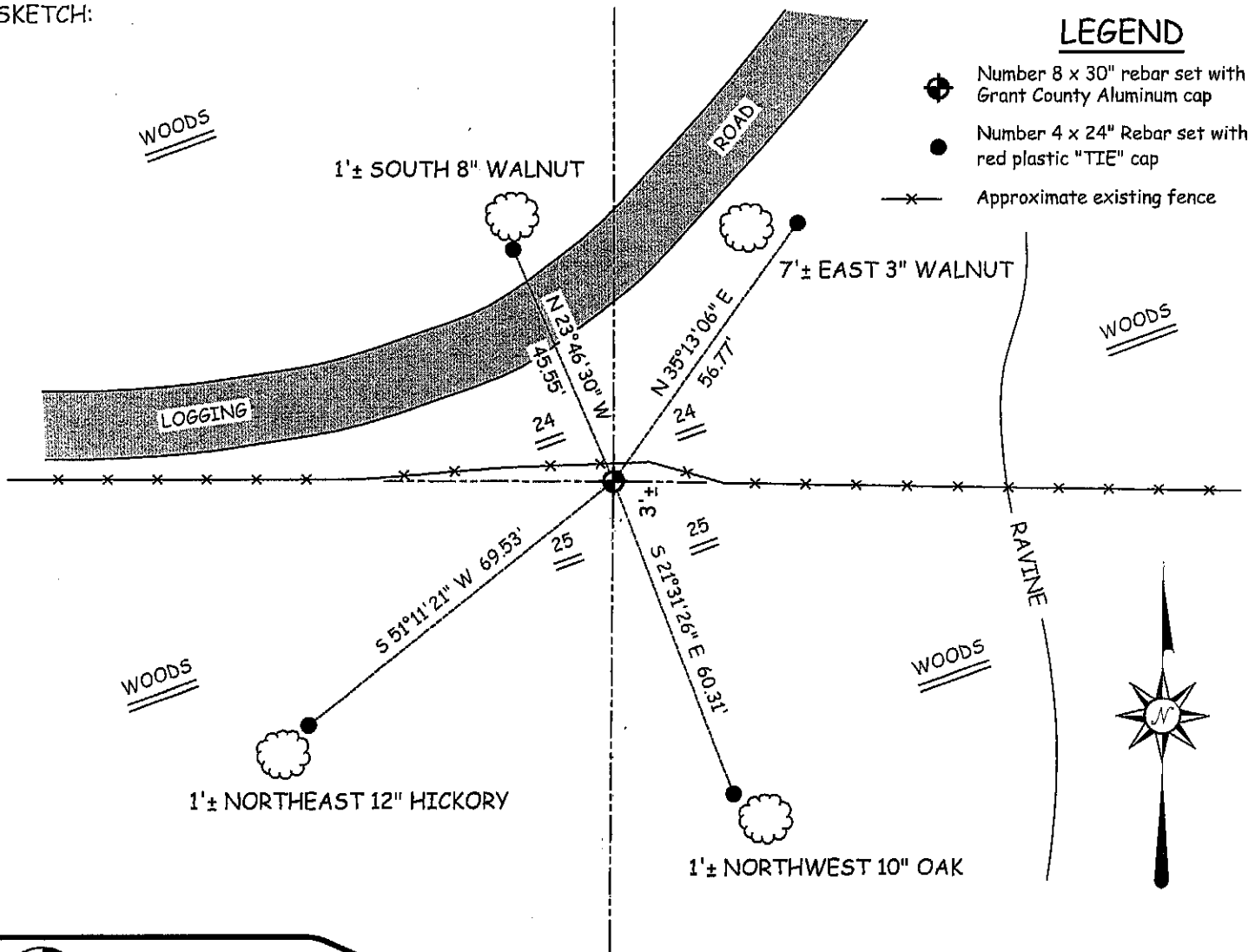
Corner was originally set in 1833 by Parke.  
 No other record of the corner was found.

DESCRIPTION OF CORNER EVIDENCE FOUND

I found an existing fence for Northing. Easting was established proportionately between the Southwest and Southeast corners of this section. Verified this location using EDM & GPS methods.

DESCRIPTION OF CORNER AND WITNESS MONUMENTS, references and accessories used to perpetuate the original or re-established location of this corner. Witnesses to corner location Bobby Sedgwick & Shelby Blindert & Shane Austin & Mike Runde

SKETCH:



SKETCH NOT TO SCALE



**Austin Engineering LLC**

4211 HWY 81 E, LANCASTER, WI 53813  
 PHONE 608-723-6363 FAX 608-723-6702

JOB NUMBER 06S073  
 FIELDBOOK: TDSR, 2603  
 G:\T7NR3W\19  
 H:\TIE\T7NR4W\82

DRAWN BY: SW AUSTIN  
 APPROVED: LL AUSTIN