

GRANT COUNTY CERTIFIED LAND CORNER

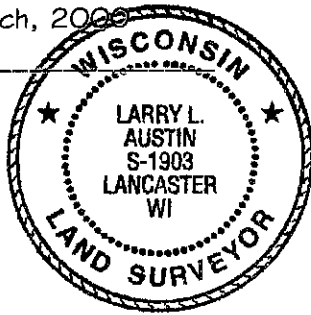
CORNER NUMBER 81

CERTIFICATE:

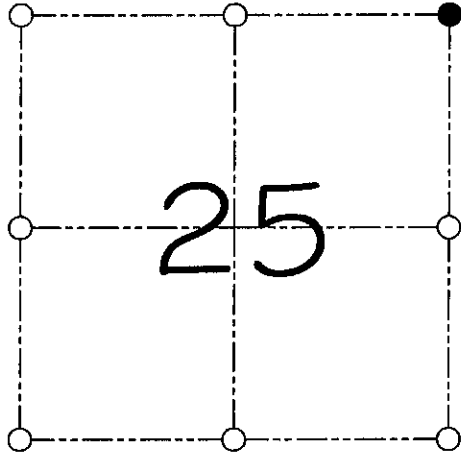
I, Larry L. Austin, do hereby certify that on the 7th day of March, 2000, I found evidence of the Northeast corner of Section 25, Town 7 North, Range 4 West, of the 4th Principal Meridian, and I re-established said corner according to the Wisconsin statutes as shown and described hereon.

Dated this 22nd day of March, 2000

Larry L. Austin
Larry L. Austin S-1903



SEAL



● = CORNER LOCATION

NORTHEAST CORNER OF
SECTION 25, T 7 N R 4 W
TOWN OF WOODMAN

HISTORY OF ORIGINAL CORNER ESTABLISHMENT:

Corner was originally set in 1832 by Sibley.
No other record of the corner was found.

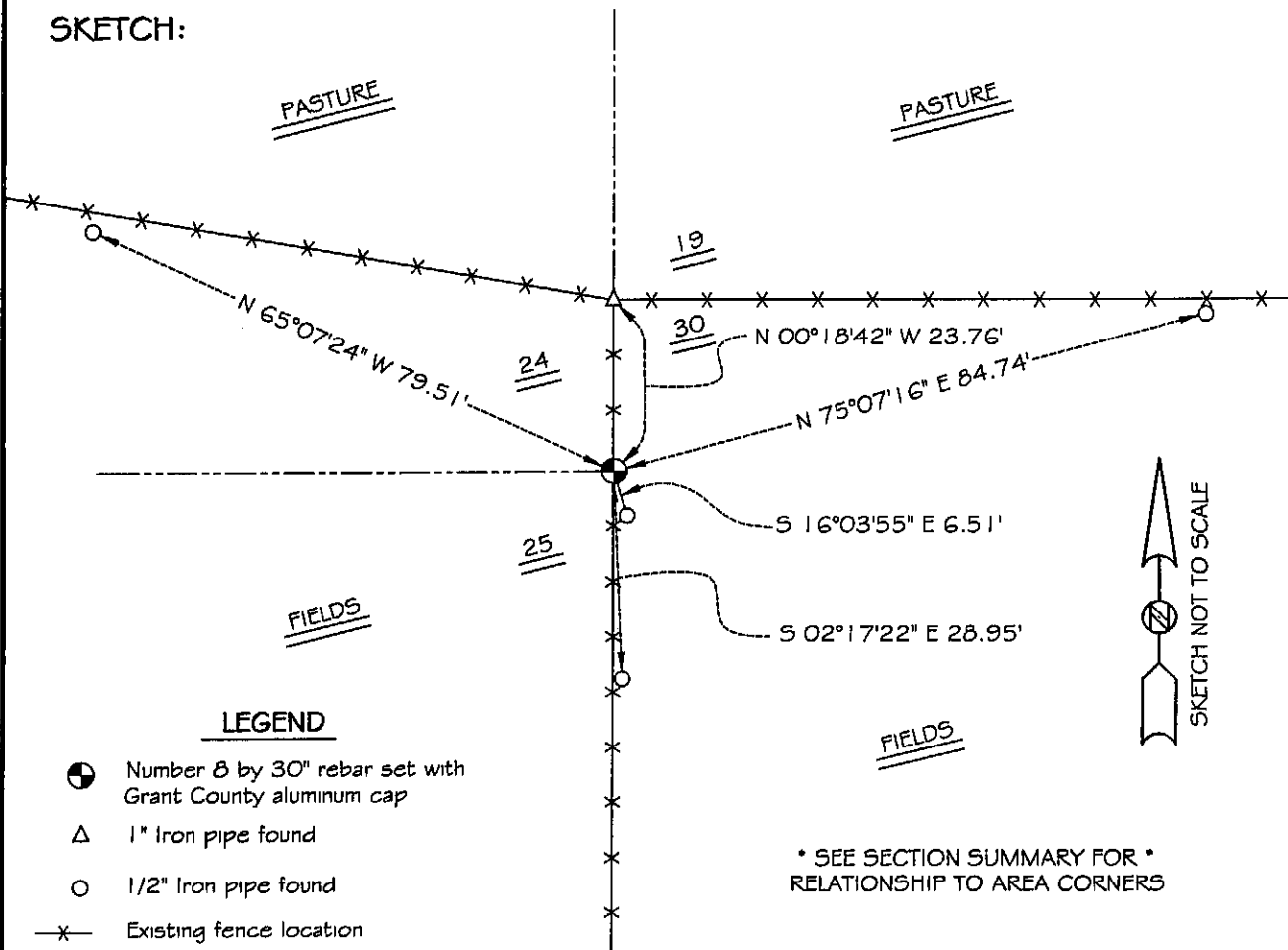
DESCRIPTION OF CORNER EVIDENCE FOUND:

I found a 1" iron pipe at the Northwest corner of Section 30.
I set the corner at the recorded offset from the pipe. Verified this location
using E.D.M. & G.P.S. methods.

DESCRIPTION OF CORNER AND WITNESS MONUMENTS, references and accessories used to perpetuate the original or re-established location of this corner

WITNESS TO THE CORNER LOCATION: SHELBY BLINDERT & BOBBY SEDGWICK

SKETCH:



LEGEND

- Number 8 by 30" rebar set with Grant County aluminum cap
- △ 1" Iron pipe found
- 1/2" Iron pipe found
- x- Existing fence location

* SEE SECTION SUMMARY FOR *
RELATIONSHIP TO AREA CORNERS