

# GRANT COUNTY CERTIFIED LAND CORNER

**CERTIFICATE:**

I, LARRY L. AUSTIN, DO HEREBY CERTIFY THAT ON 17th DAY OF NOVEMBER, 1999, I FOUND EVIDENCE OF THE EAST 1/4 CORNER OF SECTION 19, TOWN 7 NORTH, RANGE 3 WEST, OF THE FOURTH PRINCIPAL MERIDIAN, AND I RE-ESTABLISHED SAID CORNER ACCORDING TO THE WISCONSIN STATUTES AS SHOWN AND DESCRIBED HEREON.

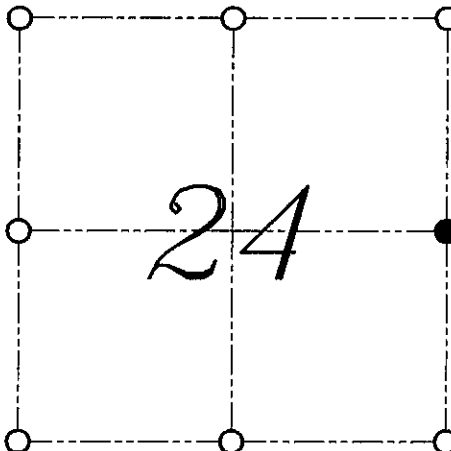
DATED THIS 6th DAY OF DECEMBER, 1999

*Larry L. Austin*  
LARRY L. AUSTIN S-1903



SEAL

CORNER NUMBER 80



● = CORNER LOCATION  
EAST 1/4 CORNER OF  
SECTION 24, T 7 N R 4 W  
TOWN OF WOODMAN

**HISTORY OF ORIGINAL CORNER ESTABLISHMENT:**

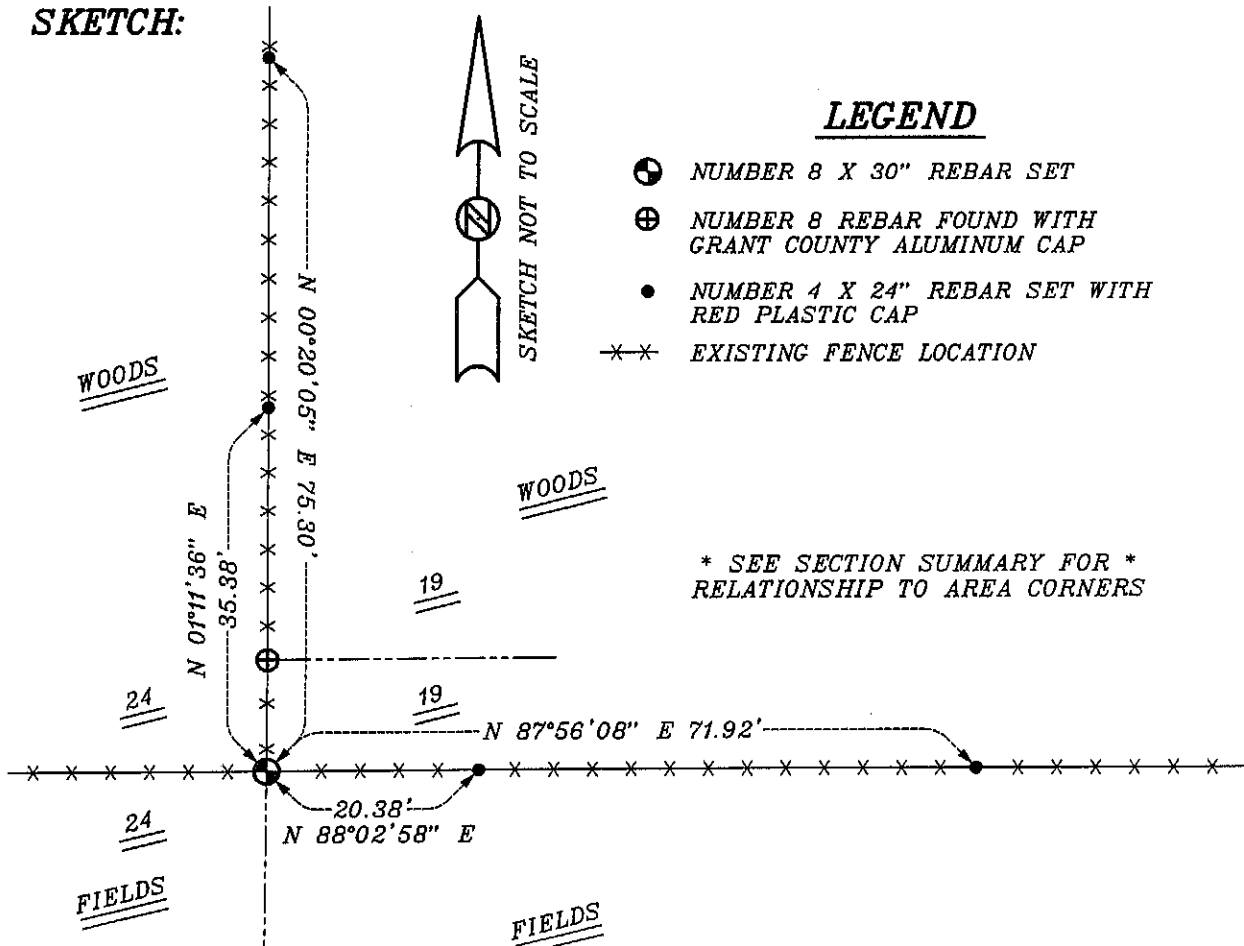
CORNER WAS ORIGINALLY SET IN 1833 BY HARVEY PARKE.  
NO OTHER RECORD OF THE CORNER WAS FOUND.

**DESCRIPTION OF CORNER EVIDENCE FOUND:**

I FOUND AN EXISTING FENCE CORNER AND ACCEPTED IT'S LOCATION AFTER AN E.D.M. AND G.P.S. TRAVERSE OF THE WEST LINE OF SECTION 19.

**DESCRIPTION OF CORNER AND WITNESS MONUMENTS, REFERENCES AND ACCESSORIES USED TO PERPETUATE THE ORIGINAL OR RE-ESTABLISHED LOCATION OF THIS CORNER:**  
WITNESS TO THE CORNER LOCATION: SHANE AUSTIN ; SHELBY BLINDERT

**SKETCH:**



**LEGEND**

- ⊕ NUMBER 8 X 30" REBAR SET
- ⊕ NUMBER 8 REBAR FOUND WITH GRANT COUNTY ALUMINUM CAP
- NUMBER 4 X 24" REBAR SET WITH RED PLASTIC CAP
- xx EXISTING FENCE LOCATION

\* SEE SECTION SUMMARY FOR \*  
RELATIONSHIP TO AREA CORNERS