

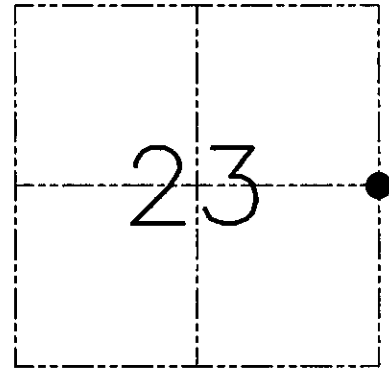
**U.S. PUBLIC LAND SURVEY MONUMENT RECORD - GRANT COUNTY, WI**  
**Section 23, Town 7 North Range 4 West, Town of Woodman**

**CERTIFICATE**

I, Larry L. Austin, do hereby certify that the corner location on this record was determined by me and/or under my direct supervision and that this U.S. public land survey monument record is correct and complete to the best of my knowledge and belief.

Dated this 9th day of July, 2001

*Larry L. Austin*  
 Larry L. Austin S-1903



● = CORNER LOCATION

**HISTORY OF CORNER ESTABLISHMENT**

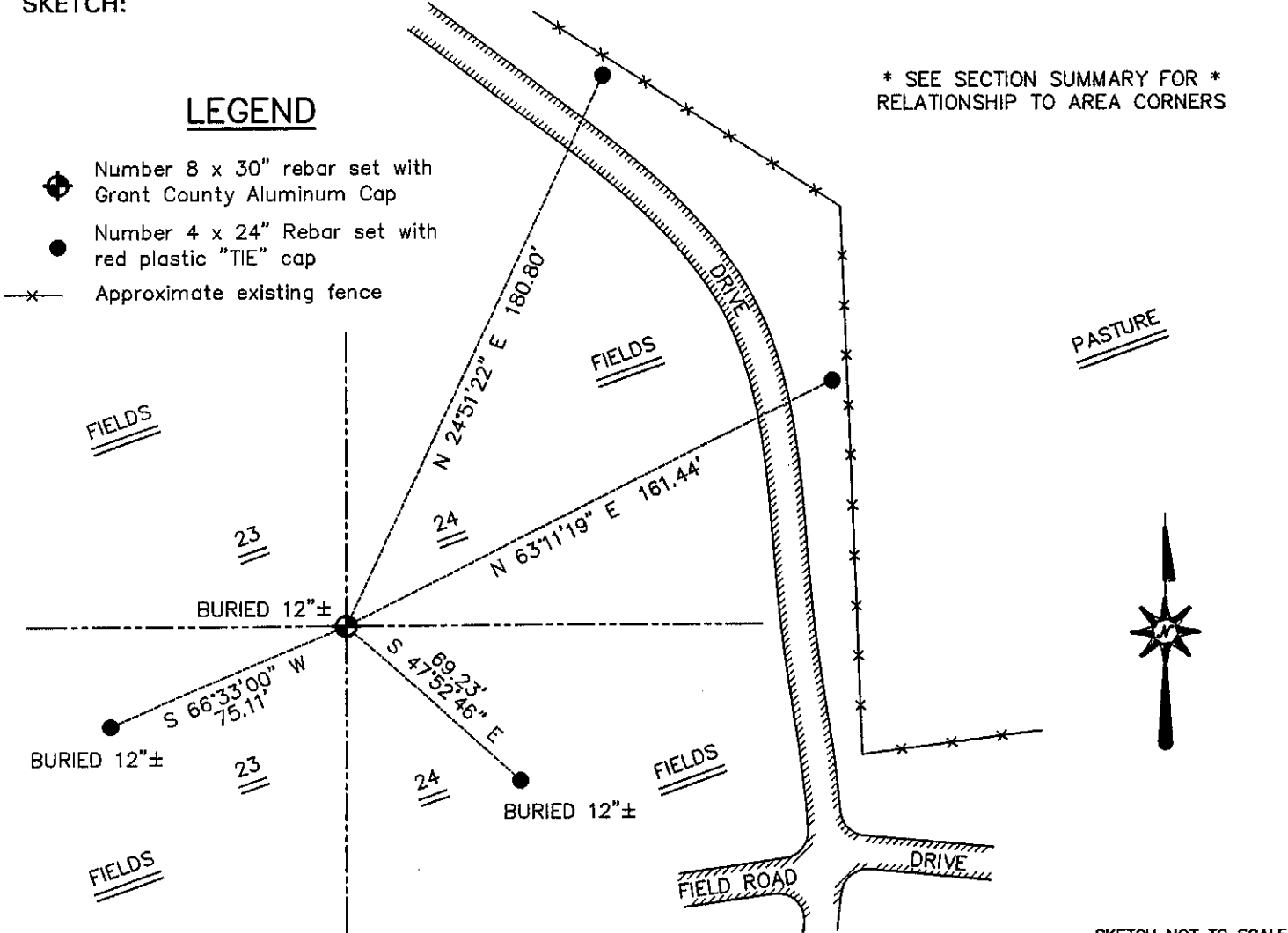
Corner was originally set in 1833 by Harvey Parke. J.C. Scott tied to the corner in 1882 & stated that trees were standing and in good condition. No other record of the corner was found.

**DESCRIPTION OF CORNER EVIDENCE FOUND**

Due to cultivation I was unable to locate any evidence of the bearing trees. I reset the corner proportionately between the Northeast corner of Section 23 and the occupied East 1/4 of Section 26. Verified this location using EDM & GPS methods.

**DESCRIPTION OF CORNER AND WITNESS MONUMENTS, references and accessories used to perpetuate the original or re-established location of this corner. Witnesses to the corner location Bobby Sedgwick & Shelby Blindert & Tim Fauver**

**SKETCH:**



**AUSTIN ENGINEERING, LLC**  
 4211 HWY 81 EAST, LANCASTER, WI 53813  
 PHONE 608-723-6363 FAX 608-723-6702

DRAWN BY: SW AUSTIN  
 APPROVED: LL AUSTIN

**CORNER NUMBER 79**

SEP 10 2001