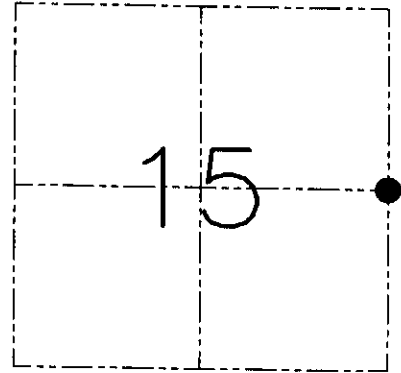
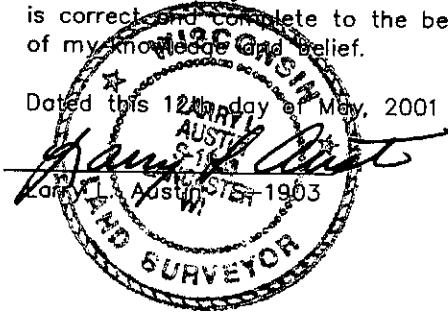


U.S. PUBLIC LAND SURVEY MONUMENT RECORD - GRANT COUNTY, WI
 Section 15, Town 7 North Range 4 West, Town of Woodman

CERTIFICATE

I, Larry L. Austin, do hereby certify that the corner location on this record was determined by me and/or under my direct supervision and that this U.S. public land survey monument record is correct and complete to the best of my knowledge and belief.

Dated this 12th day of May, 2001



● = CORNER LOCATION

HISTORY OF CORNER ESTABLISHMENT

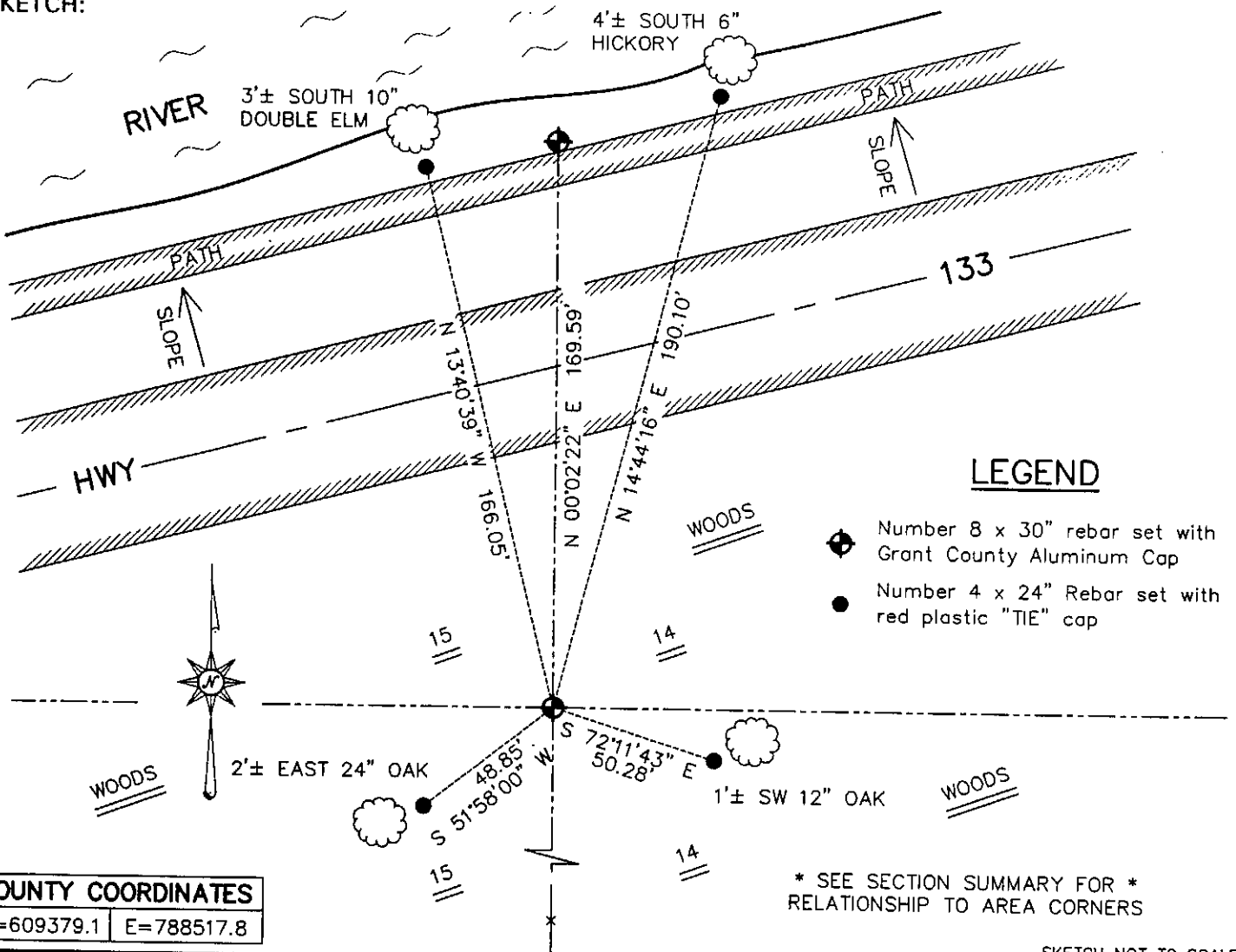
Corner was originally set in 1833 by Harvey Parke.
 No other record of the corner was found.

DESCRIPTION OF CORNER EVIDENCE FOUND

I reset the corner at the recorded distance from the Southeast corner of Section 15 for Northing. Easting was established by an existing fence South of the corner. Verified this location using EDM & GPS methods.

DESCRIPTION OF CORNER AND WITNESS MONUMENTS, references and accessories used to perpetuate the original or re-established location of this corner. Witnesses to the corner location Bobby Sedgwick & Shane Austin & Tim Fauver.

SKETCH:



LEGEND

- ◆ Number 8 x 30" rebar set with Grant County Aluminum Cap
- Number 4 x 24" Rebar set with red plastic "TIE" cap

COUNTY COORDINATES	
N=609379.1	E=788517.8

* SEE SECTION SUMMARY FOR *
 RELATIONSHIP TO AREA CORNERS

SKETCH NOT TO SCALE

AUSTIN ENGINEERING, LLC
 4211 HWY 81 EAST, LANCASTER, WI 53813
 PHONE 608-723-6363 FAX 608-723-6702

FIELDBOOK: SDR33, 2007, 2009,
 G:\T7NR4W\133 2020
 C:\SWA\TIE\T7NR4W\58
 CREW: BS-SB-SA-TF

DRAWN BY: SW AUSTIN
 APPROVED: LL AUSTIN

CORNER NUMBER 58