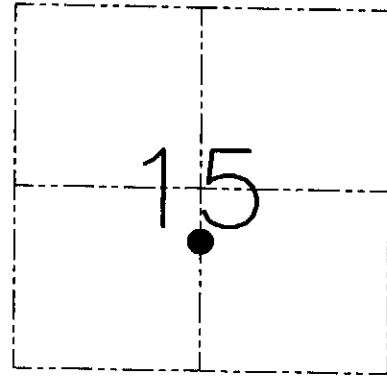
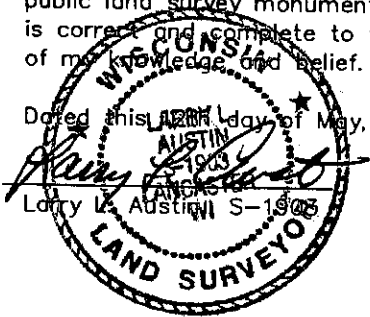


U.S. PUBLIC LAND SURVEY MONUMENT RECORD - GRANT COUNTY, WI
 Section 15, Town 7 North Range 4 West, Town of Woodman

CERTIFICATE

I, Larry L. Austin, do hereby certify that the corner location on this record was determined by me and/or under my direct supervision and that this U.S. public land survey monument record is correct and complete to the best of my knowledge and belief.

Dated this 22nd day of May, 2001



● = CORNER LOCATION

HISTORY OF CORNER ESTABLISHMENT

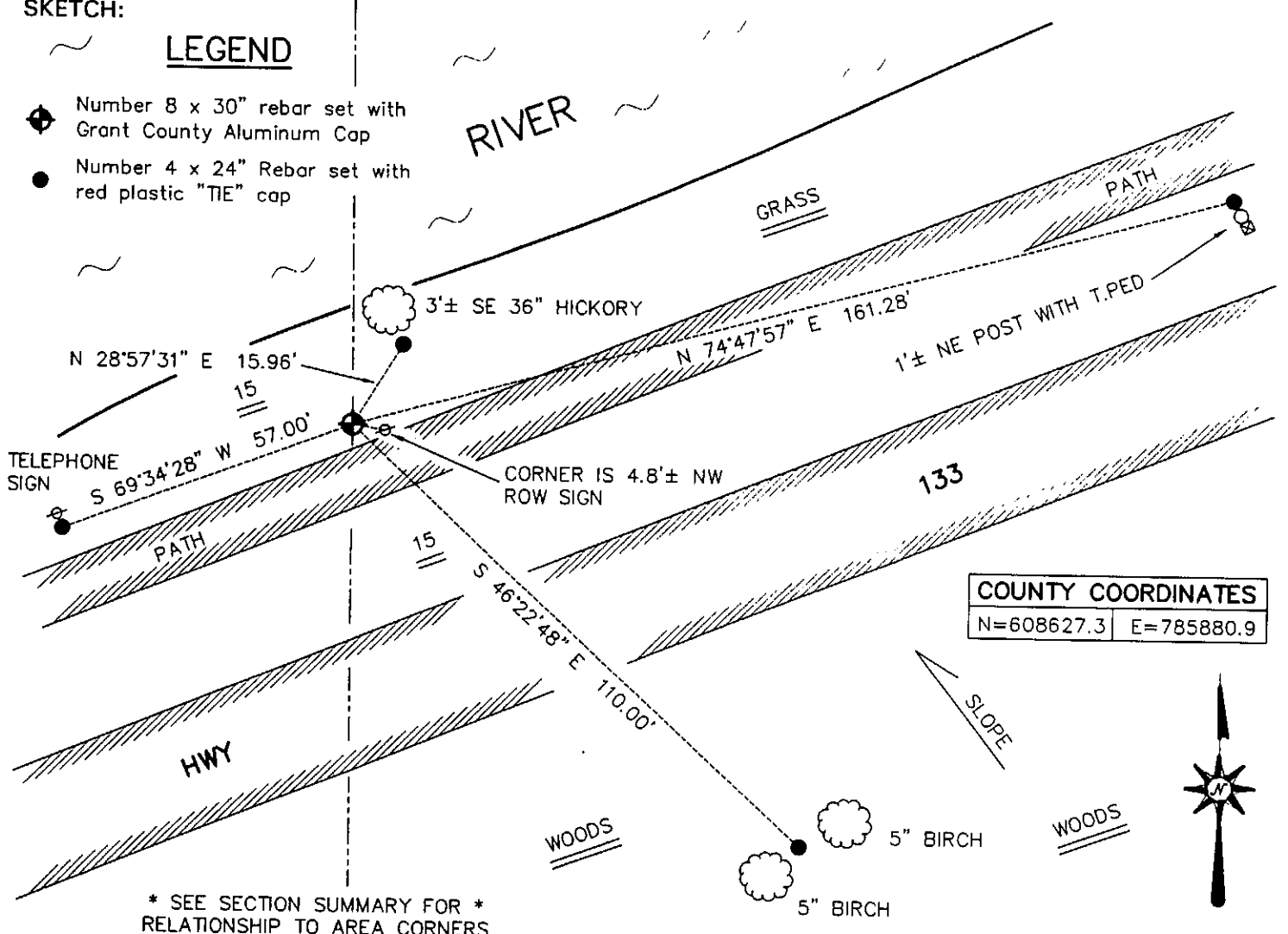
Corner was never originally set.

DESCRIPTION OF CORNER EVIDENCE FOUND

I set the corner on the East line of the Southwest 1/4 of Section 15. (The East line of the Southwest 1/4 was established proportionately between the West line of the Southwest 1/4 and the East line of the Southeast 1/4) This location is on the South side of the river bank. Verified this location using EDM & GPS methods.

DESCRIPTION OF CORNER AND WITNESS MONUMENTS, references and accessories used to perpetuate the original or re-established location of this corner. Witnesses to the corner location Bobby Sedgwick & Shane Austin & Tim Fauver.

SKETCH:



* SEE SECTION SUMMARY FOR *
RELATIONSHIP TO AREA CORNERS

SKETCH NOT TO SCALE

AUSTIN ENGINEERING, LLC
 4211 HWY 81 EAST, LANCASTER, WI 53813
 PHONE 608-723-6363 FAX 608-723-6702

FIELDBOOK: SDR33, 2007, 2009,
 G:\T7NR4W\133 2020
 C:\SWA\TIE\T7NR4W\46MEA
 CREW: BS-SB-SA-TF

DRAWN BY: SW AUSTIN
 APPROVED: LL AUSTIN

CORNER NUMBER 46MEA