

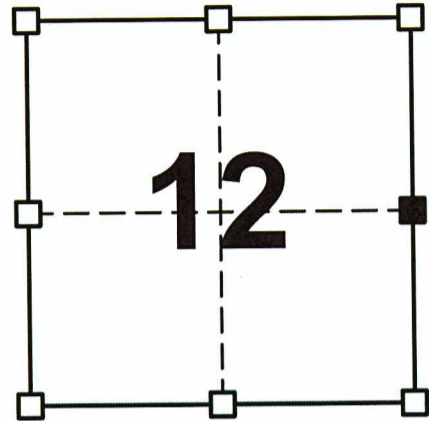
GRANT COUNTY CERTIFIED U.S. PUBLIC LAND SURVEY MONUMENT RECORD

DATUM: NAD 83 (2011) WISCRS	
CONTROL: COMBINATION OF GPS AND CONVENTIONAL FIELD CONTROL	

THE EAST QUARTER CORNER OF SECTION 12,
TOWN 7 NORTH, RANGE 4 WEST, TOWN OF
WOODMAN, GRANT COUNTY, WISCONSIN.

(A) IDENTIFY THE CORNER BY REFERENCE
TO THE U.S. PUBLIC LAND SURVEY SYSTEM

■ = CORNER MONUMENT RESTORED



SECTION 12
TOWN 7 NORTH
RANGE 4 WEST

WITNESS TO CORNER LOCATION:

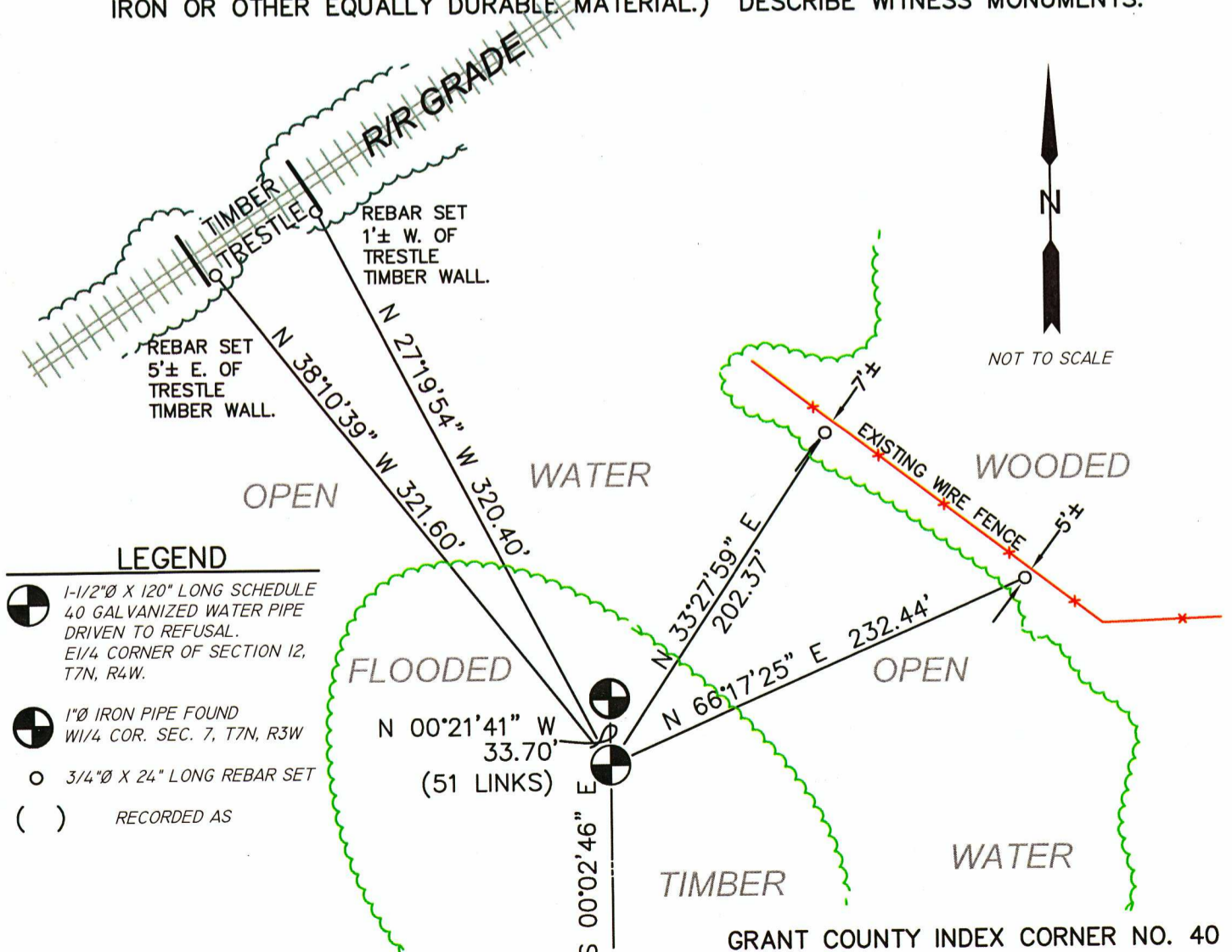
TODD T. RUMMLER

MARK A. MAHONEY

(B) DESCRIBE ANY RECORD EVIDENCE, MONUMENT EVIDENCE, OCCUPATIONAL EVIDENCE, TESTIMONIAL EVIDENCE OR ANY OTHER MATERIAL EVIDENCE YOU CONSIDERED, AND WHETHER THE MONUMENT WAS FOUND OR PLACED.

THIS CORNER IS LOCATED IN A BACKWATER SLOUGH OF THE WISCONSIN RIVER AND I COULD FIND NO RECORDS INDICATING THAT THIS CORNER HAS EVER BEEN RE-ESTABLISHED FOLLOWING THE ORIGINAL GOVERNMENT SURVEY OF 1839. BRUCE D. BOWDEN, S-1250 ESTABLISHED THE LOCATION OF THE SUBORDINATE WEST QUARTER CORNER OF SECTION 7, T7N, R3W IN CONJUNCTION WITH HIS SURVEY FOR SYLVESTER BALL DATED JULY 14, 1978 IN THE SOUTHWEST QUARTER OF SECTION 7. MR. BOWDEN NOTES ON THE PLAT OF SURVEY "1" 1" I.D. X 10' LONG IRON PIPE SET 4-1/2' INTO GROUND". (CONTINUED ON SHEET 2)

(C & D) IN THE PLAN VIEW DRAWING BELOW, PROVIDE REFERENCE TIES TO AT LEAST 4 WITNESS MONUMENTS. (WITNESS MONUMENTS SHALL BE CONCRETE, NATURAL STONE, IRON OR OTHER EQUALLY DURABLE MATERIAL.) DESCRIBE WITNESS MONUMENTS.



LEGEND

- 1-1/2"Ø X 120" LONG SCHEDULE 40 GALVANIZED WATER PIPE DRIVEN TO REFUSAL. E1/4 CORNER OF SECTION 12, T7N, R4W.
- 1"Ø IRON PIPE FOUND W1/4 COR. SEC. 7, T7N, R3W
- 3/4"Ø X 24" LONG REBAR SET
- RECORDED AS

(CONTINUED FROM SHEET 1) I DONNED CHEST WADERS AND WADED OUT INTO THE SLOUGH AND FOUND THE 1" PIPE SET BY MR. BOWDEN IN 1978 AND ACCEPTED IT AS THE WEST QUARTER CORNER OF SECTION 7, T7N, R3W. I THEN COMPUTED A LOCATION FOR THE EAST QUARTER CORNER OF SECTION 12, T7N, R4W ON A STRAIGHT LINE BETWEEN THE WEST QUARTER CORNER OF SECTION 7 AND THE SOUTHWEST CORNER OF SECTION 7 AND 51 LINKS (THE ORIGINAL GOVERNMENT SURVEY AVERAGE OFFSET DISTANCE) TO THE SOUTH OF MR. BOWDEN'S PIPE. I DROVE A 1-1/2" INSIDE DIAMETER SCHEDULE 40 GALVANIZED WATER PIPE 10' LONG AT THIS LOCATION TO MONUMENT THE CORNER. DESPITE MY DILIGENCE WHILE DRIVING THE PIPE, THE FACT THAT I WAS STANDING IN 4-1/2' OF WATER AND MUCK AND ENCOUNTERING RESISTANCE WHILE DRIVING THE PIPE CAUSED THE PIPE TO DEVIATE SLIGHTLY FROM THE COMPUTED LOCATION. I DROVE THE PIPE DOWN THROUGH THE MUCK AND SOIL AS FAR AS I COULD, WHICH WAS ABOUT 6'. I THEN MEASURED TO THE PIPE AT ITS SET LOCATION AND THE INFORMATION SHOWN HEREON AND ON THE ASSOCIATED PLAT OF SURVEY REFLECTS THAT "AS SET" LOCATION. I THEN ESTABLISHED REFERENCE TIES TO FURTHER PERPETUATE THE CORNER LOCATION.

- (E) DESCRIBE ANY MATERIAL DISCREPANCY BETWEEN THE LOCATION OF THE CORNER AS RESTORED OR REESTABLISHED AND THE LOCATION OF THAT CORNER AS PREVIOUSLY RESTORED OR REESTABLISHED BY DISTANCE AND DIRECTION. SHOW THE DISCREPANCY ON THE PLAN VIEW DRAWING UNDER (C), ABOVE. SHOW THE DISTANCES BETWEEN THE CORNER AS PREVIOUSLY RESTORED OR REESTABLISHED AND (1) THE CORNER AS RESTORED OR REESTABLISHED, AND (2) TO AT LEAST 2 OF THE WITNESS MONUMENTS AS SHOWN ON THE DRAWING IN (C), ABOVE.

NONE

- (F) WAS THE CORNER RESTORED THROUGH ACCEPTANCE OF (1) AN OBLITERATED EVIDENCE LOCATION, OR (2) A FOUND PERPETUATED LOCATION?

2.) A FOUND PERPETUATED LOCATION

- (G & H) WAS THE CORNER REESTABLISHED THROUGH LOST CORNER PROPORTIONATE METHODS? IF SO SHOW THE METHOD, INCLUDING THE DIRECTION AND DISTANCED TO OTHER PUBLIC LAND SURVEY CORNERS USED AS EVIDENCE OR USED FOR PROPORTIONING IN DETERMINING THE CORNER LOCATION.

NO.

AFFIX LAND SURVEYOR SEAL

- (I) I, TODD T. RUMMLER, PLS-2443 CERTIFY THAT THE CORNER LOCATION SHOWN ON THIS RECORD WAS DETERMINED BY ME OR UNDER MY DIRECTION AND CONTROL AND THAT THIS U.S. PUBLIC LAND SURVEY MONUMENT RECORD IS CORRECT AND COMPLETE TO THE BEST OF MY KNOWLEDGE AND BELIEF.

SIGNATURE

DATE

