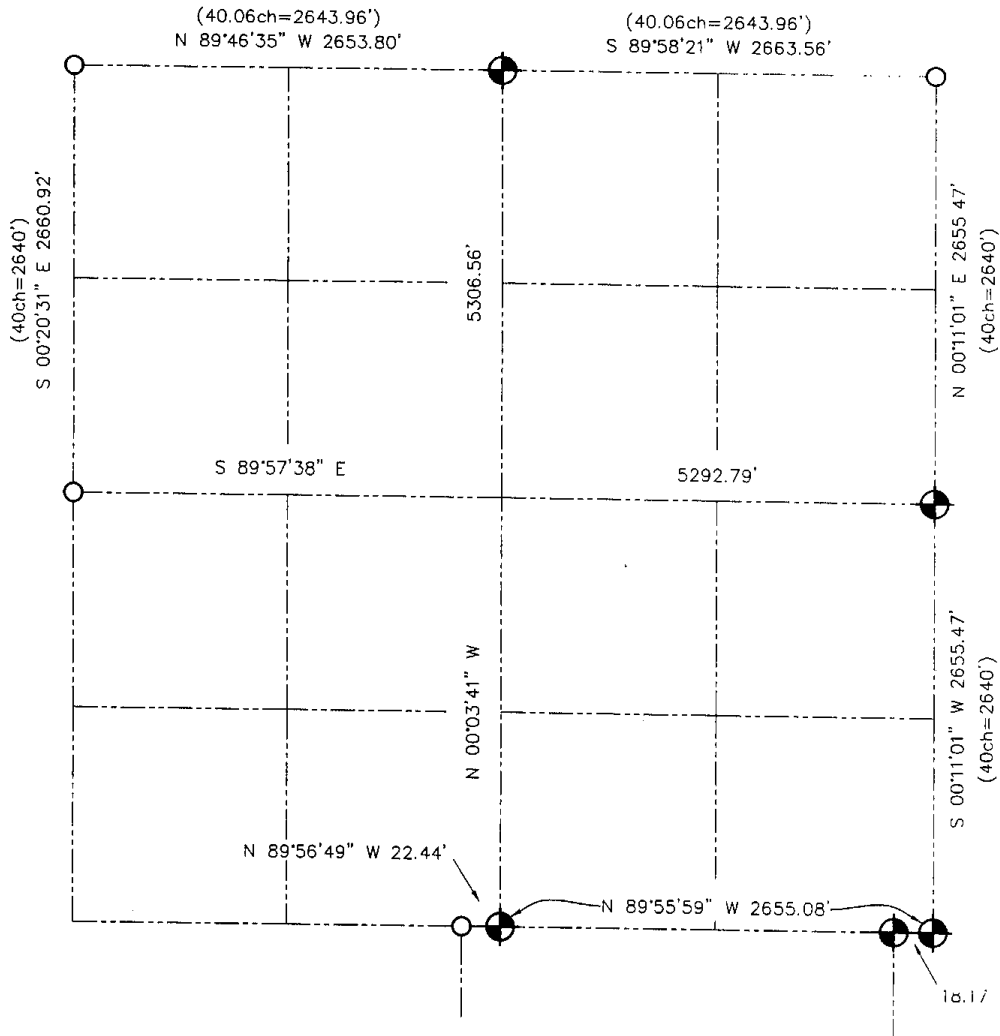




U.S. PUBLIC LAND SURVEY MONUMENT RECORD - GRANT COUNTY, WI
 Summary of Section 34, Town 7 North Range 3 West, Town of Marion



LEGEND

-  NUMBER 8 x 30" REBAR SET WITH GRANT COUNTY ALUMINUM CAP
-  NUMBER 6 IRON BAR FOUND



Relationship of all section corners to other section corners shall be shown hereon by bearing and distance or grid coordinates. Bearing reference shown below.



Bearings referenced to the East-West 1/4 line of Section 34, which is assumed to bear N 89°57'38" W.

SKETCH NOT TO SCALE

AUSTIN ENGINEERING, LLC
 4211 HWY 81 EAST, LANCASTER, WI 53813
 PHONE 608-723-6363 FAX 608-723-6702

FIELDBOOK: SDR33, 2008
 G:\T7NR3W\35
 C:\SWA\TIE\T7NR3W\34SUM

CREW: BS-SB-SA-TF
 DRAWN BY: SW AUSTIN
 APPROVED: LL AUSTIN