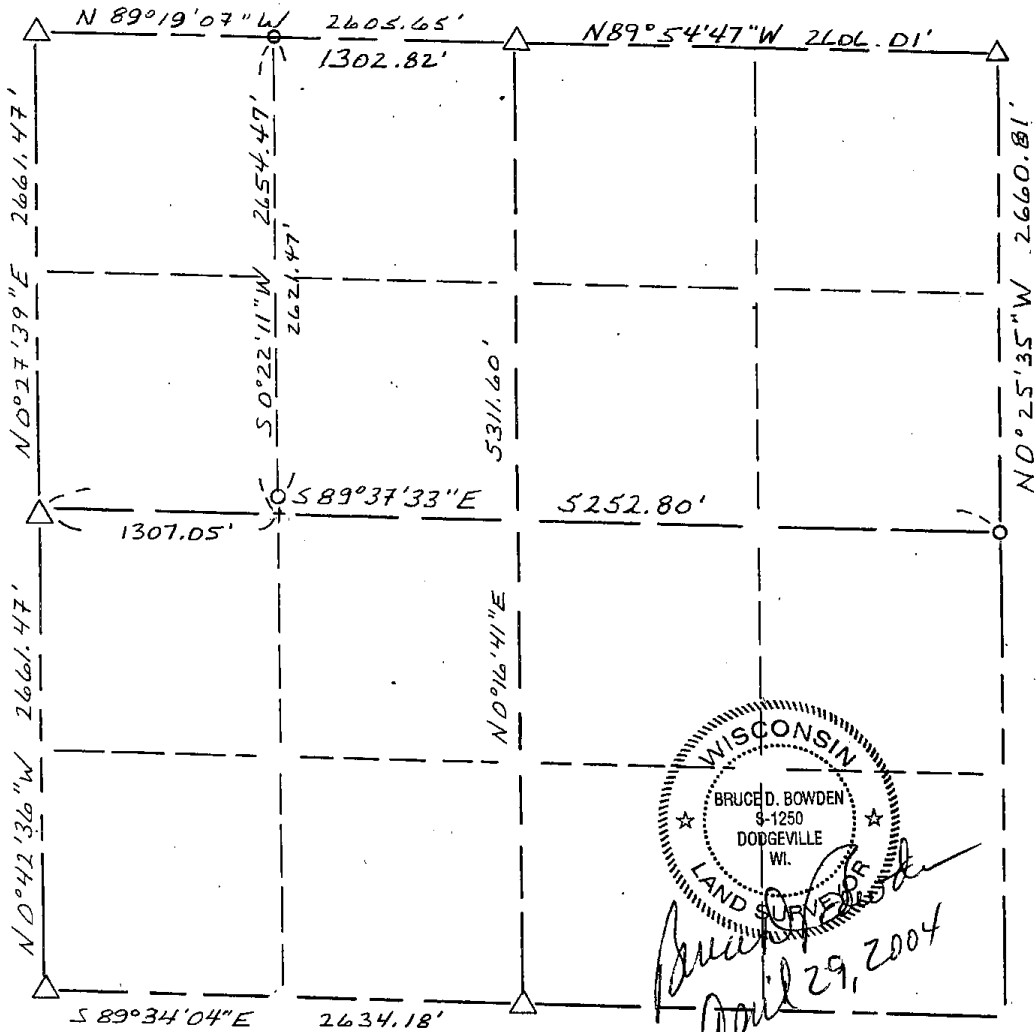


# GRANT COUNTY

## Section Summary

33 - T7N - R3W  
SECTION TOWN RANGE



### LEGEND

- △ COUNTY MONUMENT
- STONE OR CONCRETE MONUMENT
- OTHER (specify) #6 REBAR

### NOTE:

Relationships of all section corners to other section corners shall be shown hereon by bearing and distance or grid coordinates

Show or describe bearing reference

Bearings are referenced to GRS North of the Grant County Coordinate System as defined by the Wisconsin Department of Transportation and determined by GPS observation.