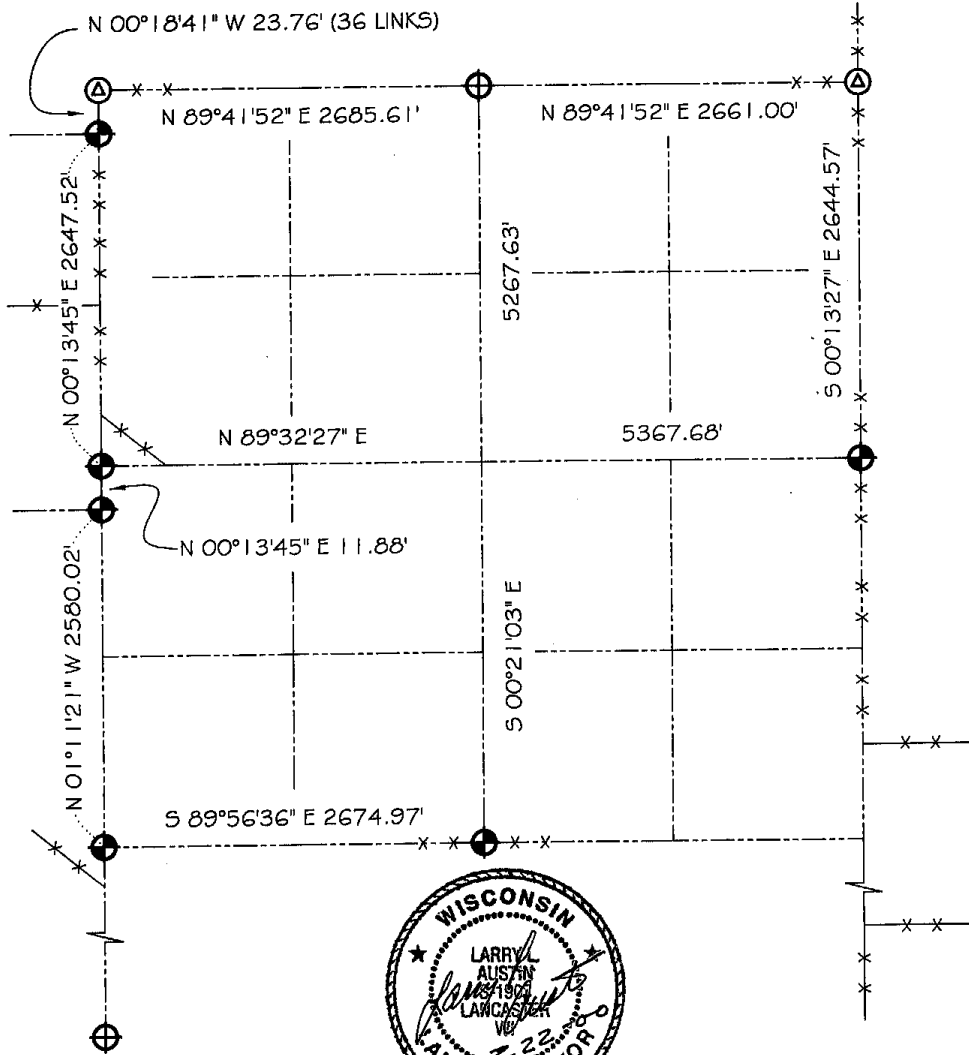





# GRANT COUNTY SECTION SUMMARY

$\frac{30}{\text{SECTION}}$  -  $\frac{7N}{\text{TOWN}}$  -  $\frac{3W}{\text{RANGE}}$



**LEGEND**

-  NO. 8 X 30" REBAR SET WITH GRANT COUNTY ALUMINUM CAP
-  NO. 8 REBAR FOUND WITH GRANT COUNTY ALUMINUM CAP
-  1" IRON PIPE FOUND

**NOTE:**

Relationships of all section corners to other section corners shall be shown hereon by bearing and distance or grid coordinates  
Show or describe bearing reference



Bearings referenced to the North-South 1/4 line of Section 30 which is assumed to bear S 00°21'03" E.