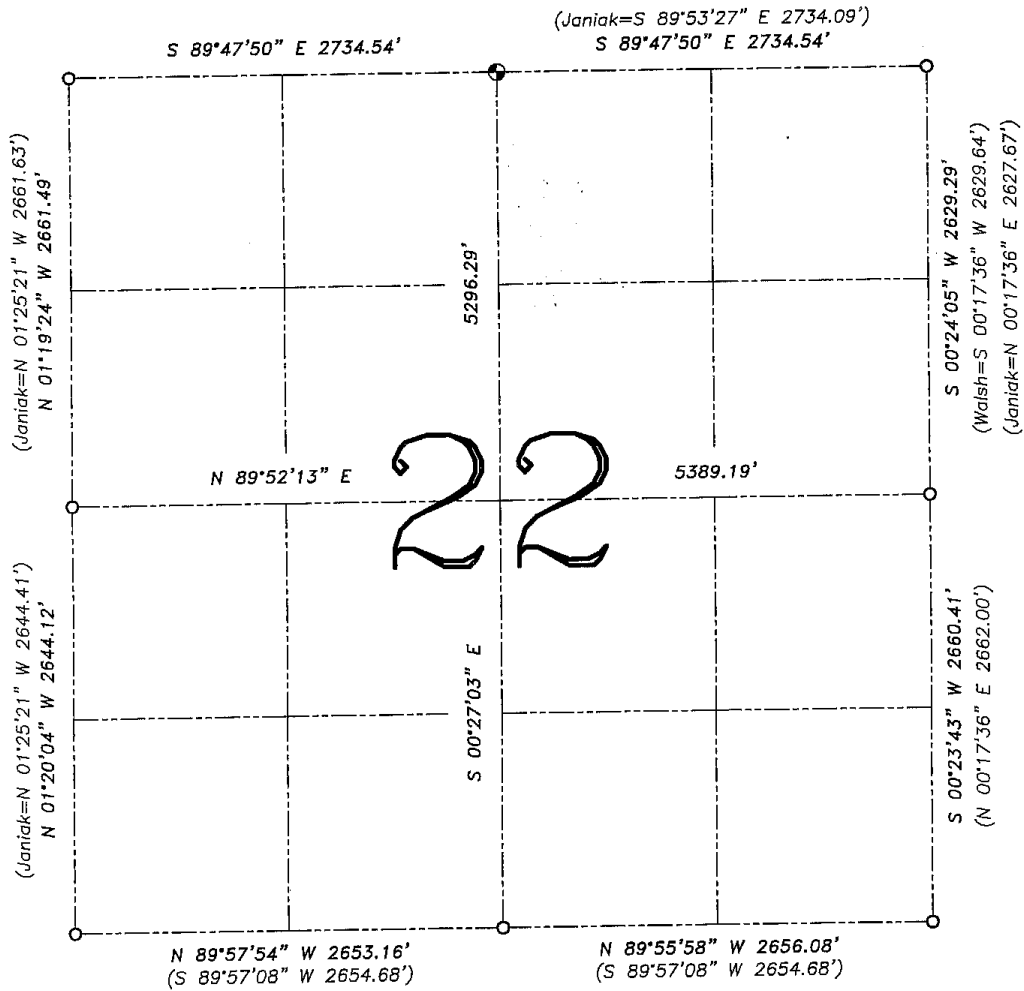


U.S. PUBLIC LAND SURVEY MONUMENT RECORD – GRANT COUNTY, WI

Summary of Section 22, Town 7 North, Range 3 West, Town of Marion

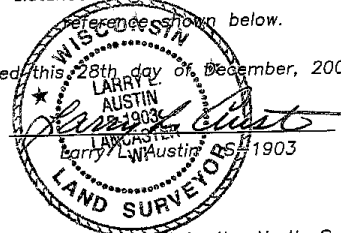


LEGEND

- ⊙ No. 8 x 30" rebar set with Grant County Aluminum Cap – wt=2.67#/l.f.
- No. 6 rebar found
- () Recorded as
- *— Approximate location of existing fence

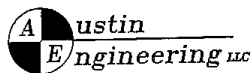
Relationship of all section corners to other section corners shall be shown hereon by bearing and distance or grid coordinates. Bearing references shown below.

Dated this 28th day of December, 2004



Bearings referenced to the North-South Quarter line of this Section, which is assumed to bear S 00°27'03" E.

SKETCH NOT TO SCALE



4211 HWY 81 E, LANCASTER, WI 53813
 PHONE 608-723-6363 FAX 608-723-6702

JOB NUMBER 04S248
 FIELDBOOK: TSDR, 2102
 G:\T7NR3W\14
 H:\TIE\T7NR3W\22SUM

DRAWN BY: SW AUSTIN
 APPROVED: LL AUSTIN