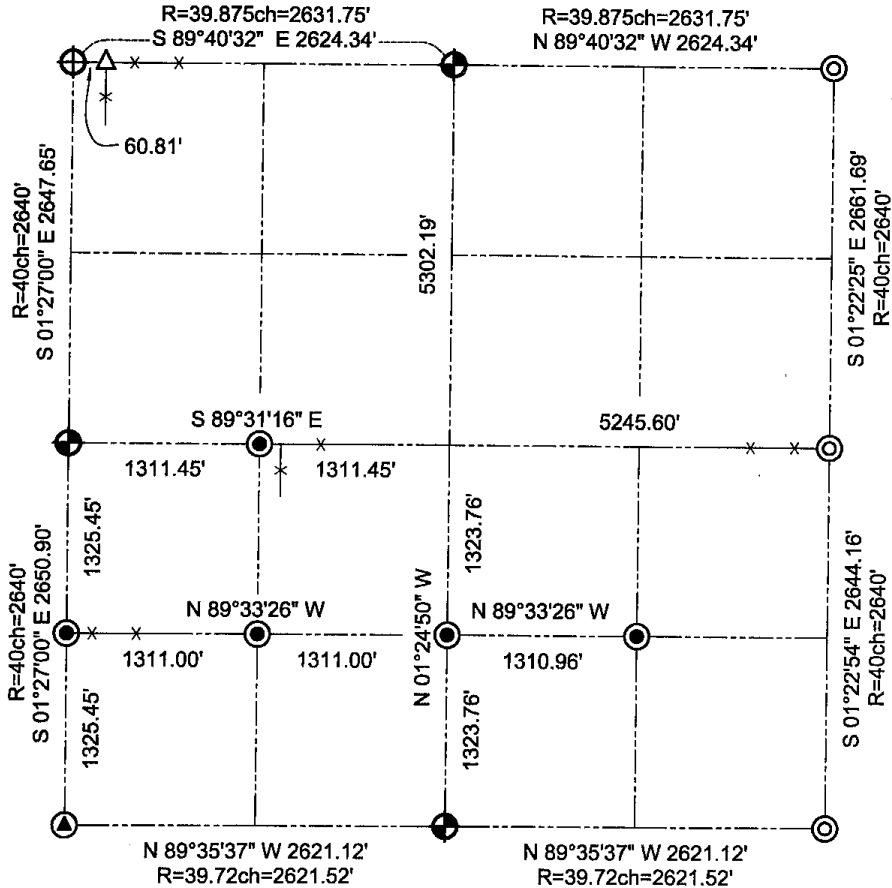


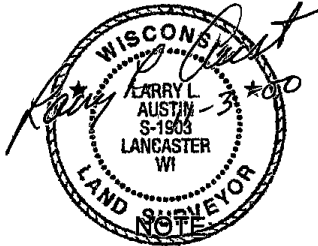
# GRANT COUNTY SECTION SUMMARY

21 - 7N - 3W  
SECTION TOWN RANGE



### LEGEND

- Number 8 x 30" rebar set with Grant County Aluminum Cap
- Existing Number 8 rebar with Grant County Aluminum Cap
- Railroad Spike Set
- Number 6 x 24" rebar set with yellow plastic survey cap
- Number 6 rebar found
- 1" Iron pipe found



Relationships of all section corners to other section corners shall be shown hereon by bearing and distance or grid coordinates.  
-Bearing reference below-



Bearings referenced to the North-South Quarter line of Section 21, which is assumed to bear N 01°24'50" W.