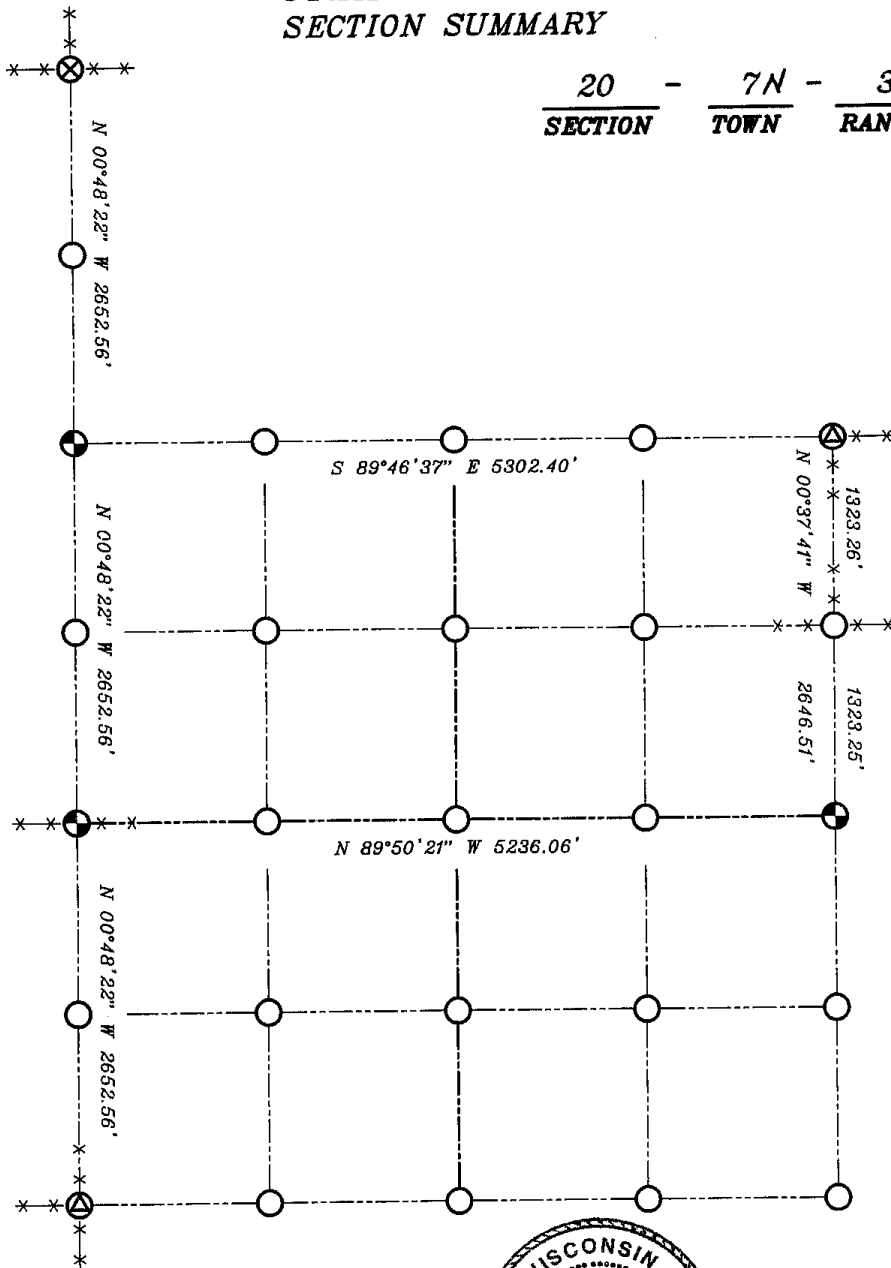





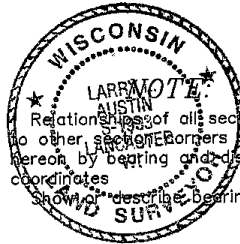
GRANT COUNTY SECTION SUMMARY

$\frac{20}{\text{SECTION}} - \frac{7N}{\text{TOWN}} - \frac{3W}{\text{RANGE}}$



LEGEND

-  NO. 8 X 30" REBAR SET WITH GRANT COUNTY ALUMINUM CAP
-  EXISTING 1" IRON PIPE
-  NAIL FOUND



RELATIONSHIPS OF ALL SECTION CORNERS TO OTHER SECTIONS BORDERS SHALL BE SHOWN HEREON BY BEARING AND DISTANCE OR GRID COORDINATES



BEARINGS REFERENCED TO THE EAST-WEST 1/4 LINE OF SECTION 20 WHICH IS ASSUMED TO BEAR N 89°50'21" W.