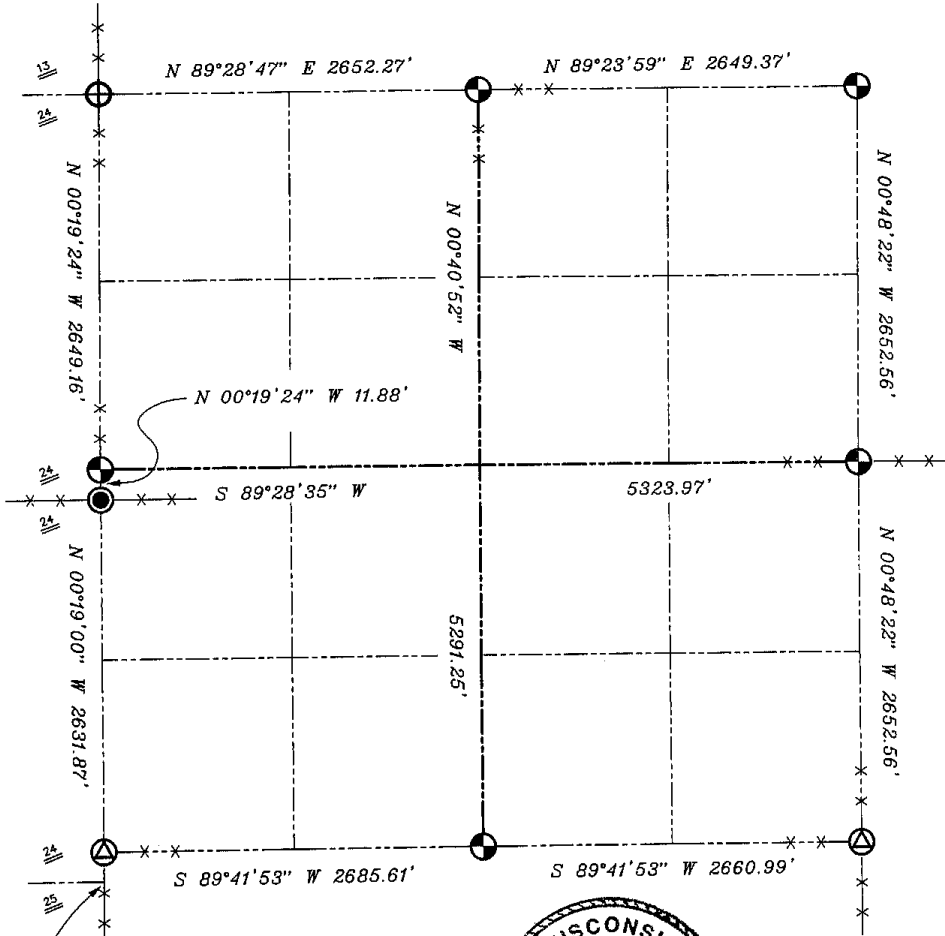


GRANT COUNTY SECTION SUMMARY

19 - 7N - 3W
SECTION TOWN RANGE



(NO MONUMENT)







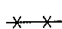
NOTE:

Relationships of all section corners to other section corners shall be shown hereon by bearing and distance or grid coordinates
Show or describe bearing reference



LEGEND

-  NO. 8 X 30" REBAR SET WITH GRANT COUNTY ALUMINUM CAP
-  NO. 8 X 30" REBAR SET
-  NO. 6 REBAR FOUND WITH GRANT COUNTY ALUMINUM CAP
-  EXISTING 1" IRON PIPE WITH TIE SHEET

 EXISTING FENCE

BEARINGS REFERENCED TO THE EAST-WEST 1/4 LINE OF SECTION 19 WHICH IS ASSUMED TO BEAR S 89°28'35" W.