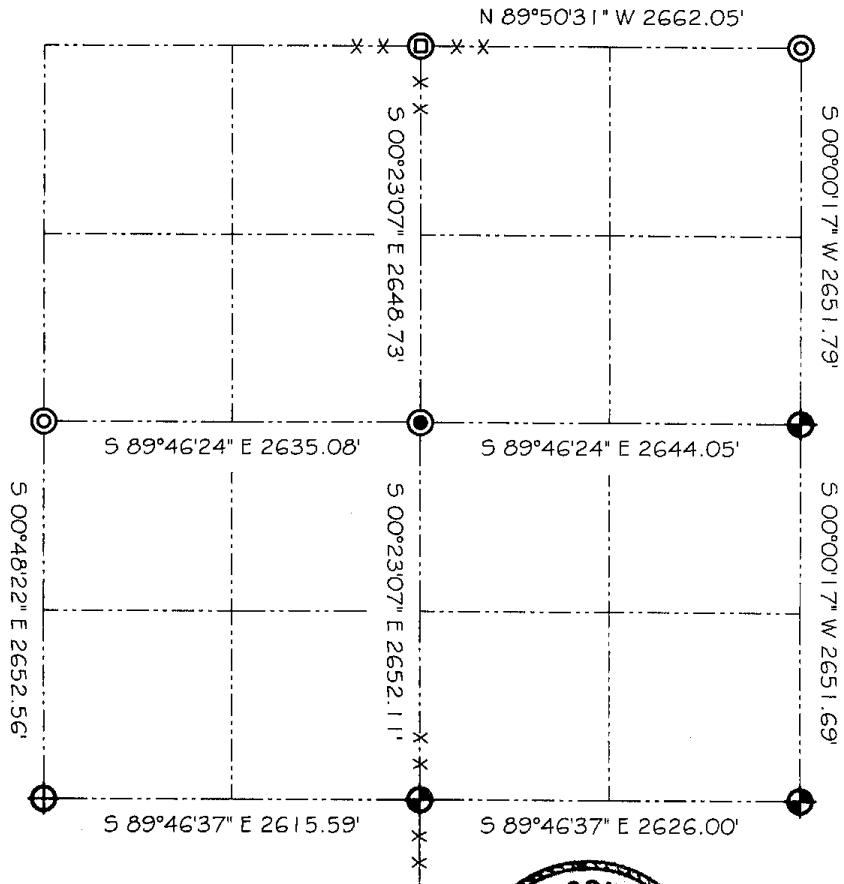


# GRANT COUNTY SECTION SUMMARY

$\frac{17}{\text{SECTION}} - \frac{7N}{\text{TOWN}} - \frac{3W}{\text{RANGE}}$



### LEGEND

- ⊕ NO. 8 X 30" REBAR SET WITH GRANT COUNTY ALUMINUM CAP
- ⊕ NO. 8 REBAR FOUND WITH GRANT COUNTY ALUMINUM CAP
- ⊙ NO. 6 X 24" REBAR SET WITH PLASTIC SURVEY CAP
- ⊙ NO. 6 REBAR FOUND
- ⊕ NO. 3" X 4" STONE FOUND
- ⊕ NO. 1" IRON PIPE FOUND



Relationships of all section corners to other section corners shall be shown hereon by bearing and distance or grid coordinates  
Show or describe bearing reference



BEARINGS REFERENCED TO THE EAST-WEST 1/4 LINE  
OF SECTION 17, WHICH IS ASSUMED TO BEAR S 89°46'24" E.

JUN 14 2001