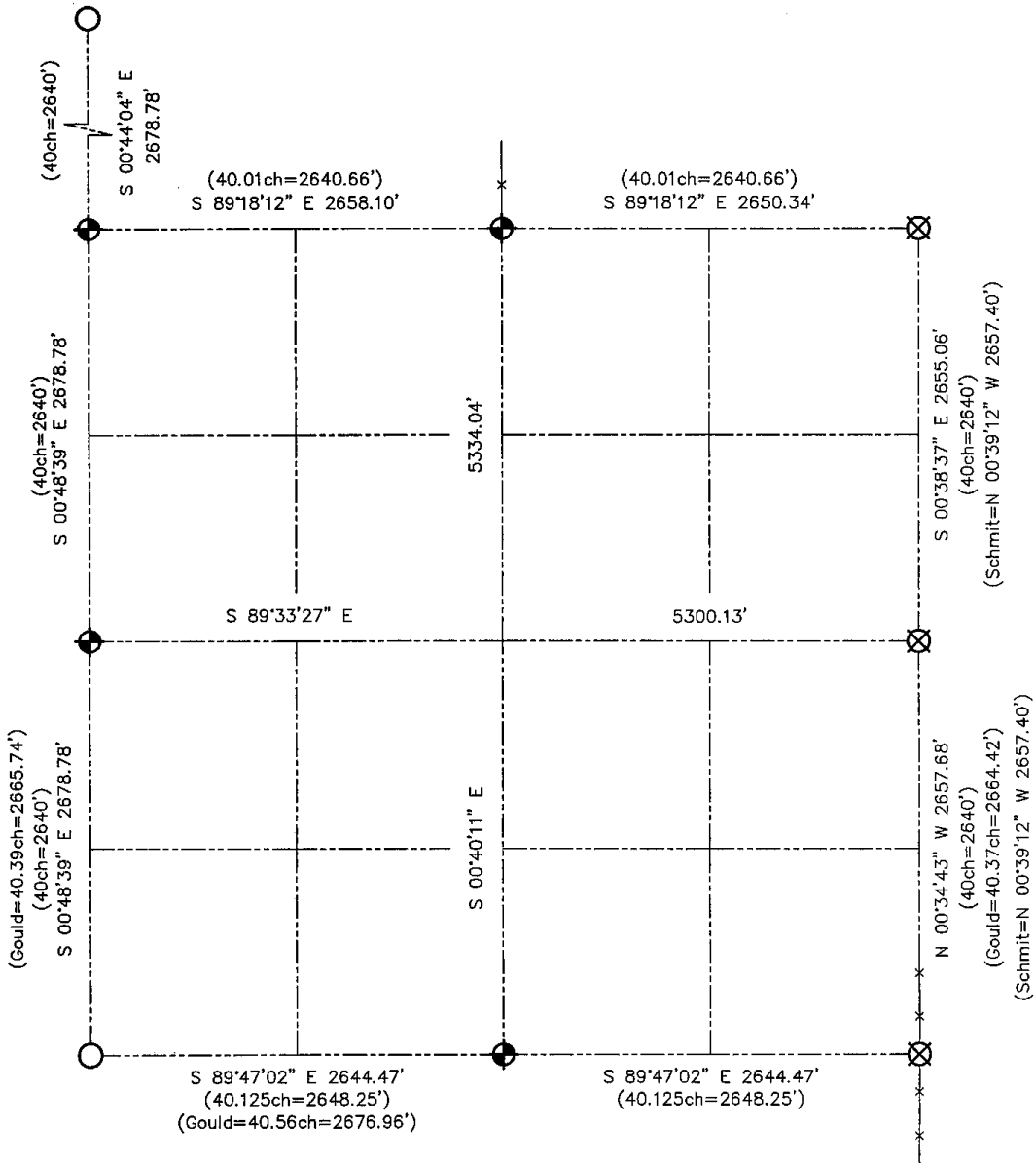


U.S. PUBLIC LAND SURVEY MONUMENT RECORD - GRANT COUNTY, WI

Summary of Section 14, Town 7 North Range 3 West, Town of Marion

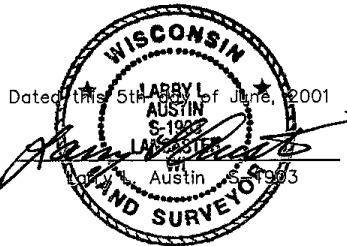


LEGEND

- NUMBER 8 x 30" REBAR SET WITH GRANT COUNTY ALUMINUM CAP
- NUMBER 7 REBAR FOUND WITH GRANT COUNTY ALUMINUM CAP
- NUMBER 6 REBAR FOUND
- () RECORDED AS



Relationship of all section corners to other section corners shall be shown hereon by bearing and distance or grid coordinates. Bearing reference shown below.



Bearings referenced to the East line of the Northeast 1/4 of Section 14, which is assumed to bear S 00°38'37" E.

SKETCH NOT TO SCALE

AUSTIN ENGINEERING, LLC
4211 HWY 81 EAST, LANCASTER, WI 53813
PHONE 608-723-6363 FAX 608-723-6702

FIELDBOOK: SDR33, 2102
G: \T7NR3W\14
C: \SWA\TIE\T7NR3W\14SUM

CREW: BS-SB-SA-TF
DRAWN BY: SW AUSTIN
APPROVED: LL AUSTIN