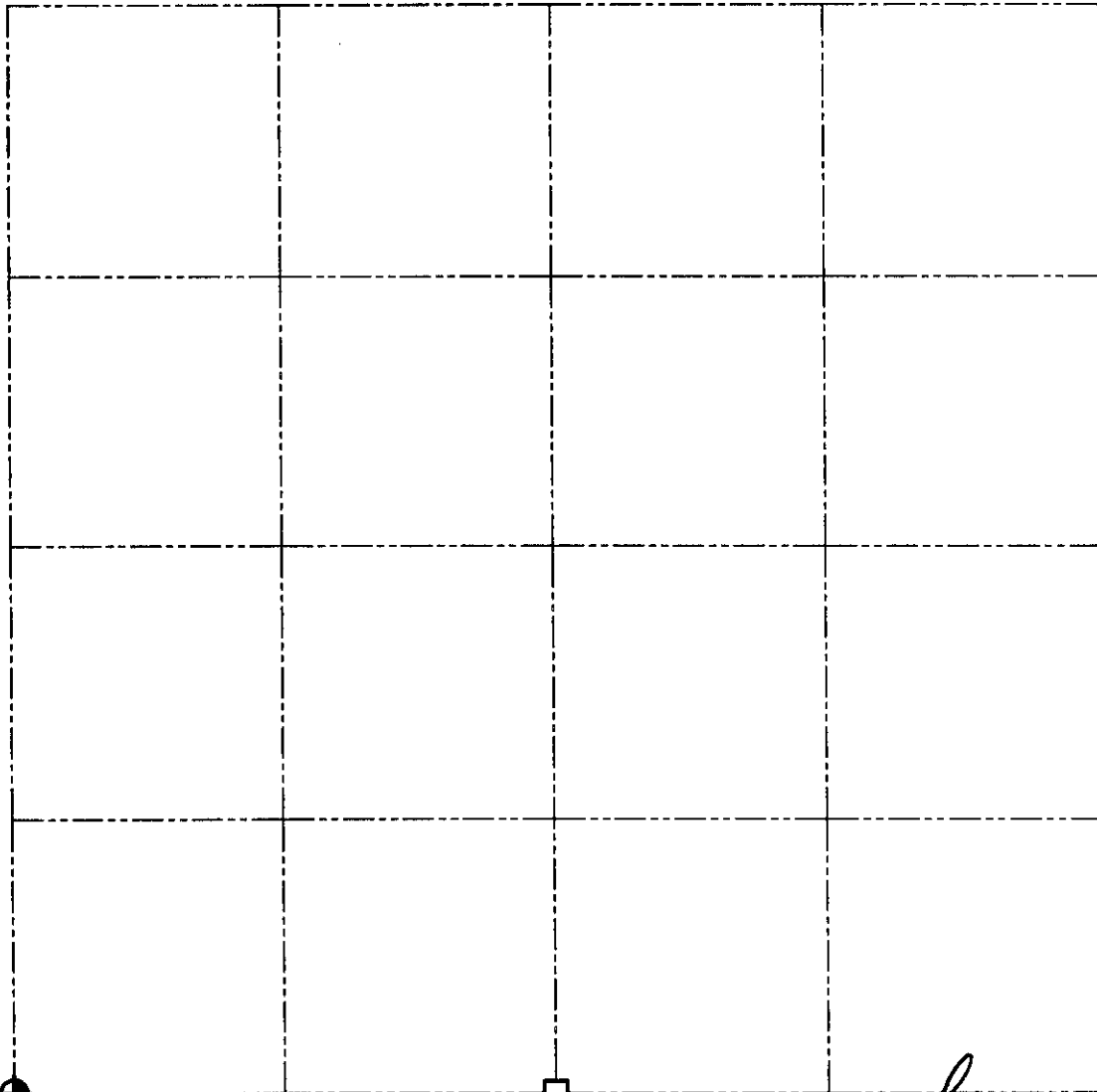





U.S. PUBLIC LAND SURVEY MONUMENT RECORD - GRANT COUNTY, WI
 Summary of Section 7, Town 7 North Range 3 West, Town of Marion

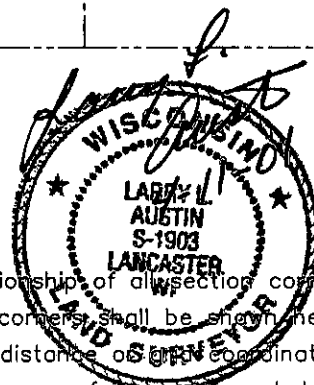


S 89°48'03" E 2645.10'

S 00°37'27" E 31.68'

LEGEND

-  NUMBER 8 x 30" REBAR SET WITH GRANT COUNTY ALUMINUM CAP
-  NUMBER 8 REBAR FOUND
-  NUMBER 10 IRON BAR FOUND



Relationship of all section corners to other section corners shall be shown hereon by bearing and distance or GPS coordinates. Bearing reference shown below.

Dated this 11th day of April, 2001

 Larry L. Austin S-1903

Bearings referenced to the South line of the Southwest 1/4 of Section 7, which is assumed to bear S 89°48'03" E.

SKETCH NOT TO SCALE

AUSTIN ENGINEERING, LLC

4211 HWY 81 EAST, LANCASTER, WI 53813
 PHONE 608-723-6363 FAX 608-723-6702

FIELDBOOK: SDR33, 2040

G: \T7NR3W\19

C: \SWA\TIE\T7NR3W\07SUM

CREW: BS-SB-SA-TF

DRAWN BY: SW AUSTIN

APPROVED: LL AUSTIN