

# GRANT COUNTY CERTIFIED LAND CORNER

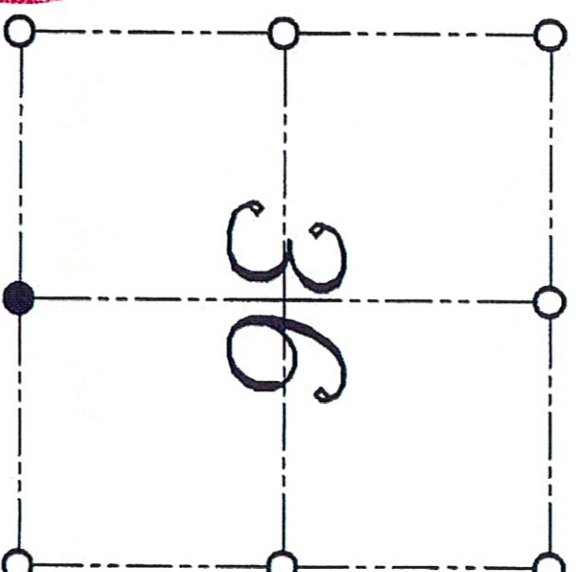
CORNER NUMBER 122

CERTIFICATE:

I, LARRY L. AUSTIN, DO HEREBY CERTIFY THAT ON 22nd DAY OF OCTOBER, 1999, I FOUND NO EVIDENCE OF THE SOUTH 1/4 CORNER OF SECTION 36, TOWN 7 NORTH, RANGE 3 WEST, OF THE FOURTH PRINCIPAL MERIDIAN, AND I RE-ESTABLISHED SAID CORNER ACCORDING TO THE WISCONSIN STATUTES AS SHOWN AND DESCRIBED HEREON.

DATED THIS 1st DAY OF NOVEMBER, 1999

*Larry L. Austin*  
LARRY L. AUSTIN S-1903



● = CORNER LOCATION

SOUTH 1/4 CORNER OF  
SECTION 36, T 7 N R 3 W  
TOWN OF MARION

SEAL

HISTORY OF ORIGINAL CORNER ESTABLISHMENT:

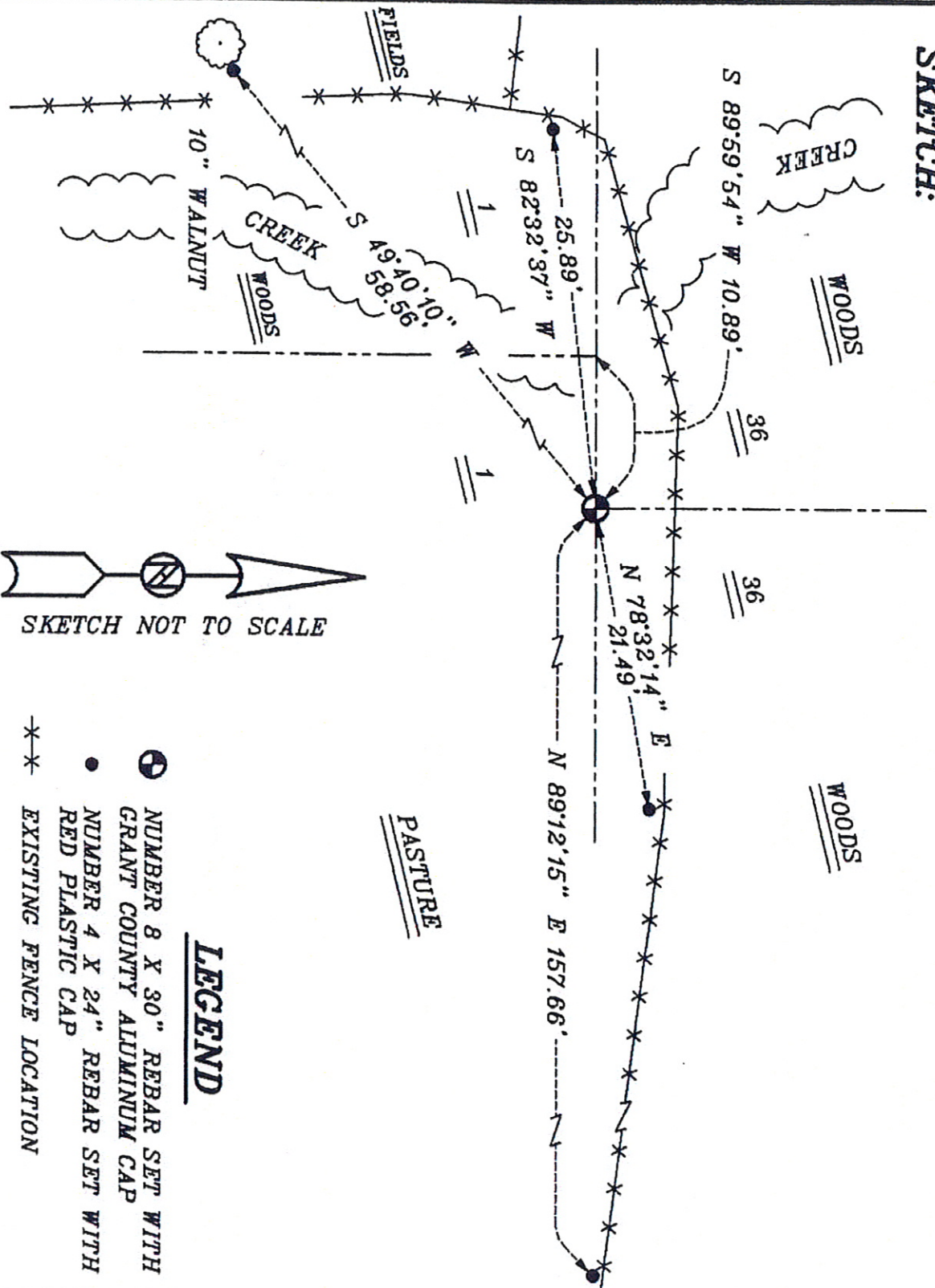
CORNER WAS SET IN 1832 BY SIBLEY.  
NO OTHER RECORD OF THE CORNER WAS FOUND.

DESCRIPTION OF CORNER EVIDENCE FOUND:

I FOUND NO EVIDENCE OF THE CORNER'S LOCATION. I RESET THE CORNER MIDWAY BETWEEN THE SOUTHWEST AND SOUTHEAST CORNERS. I VERIFIED THIS LOCATION USING E.D.M. AND C.P.S. METHODS.

DESCRIPTION OF CORNER AND WITNESS MONUMENTS, REFERENCES AND ACCESSORIES USED TO PERPETUATE THE ORIGINAL OR RE-ESTABLISHED LOCATION OF THIS CORNER.  
WITNESS TO THE CORNER LOCATION: BOBBY SEDGWICK; SHELBY BLINDERT

**SKETCH:**



SKETCH NOT TO SCALE

**LEGEND**

- ⊕ NUMBER 8 X 30" REBAR SET WITH GRANT COUNTY ALUMINUM CAP
- NUMBER 4 X 24" REBAR SET WITH RED PLASTIC CAP
- \*\* EXISTING FENCE LOCATION