

# GRANT COUNTY CERTIFIED LAND CORNER

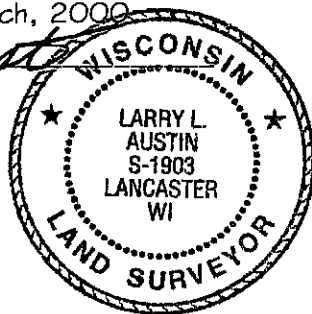
CORNER NUMBER 113

**CERTIFICATE:**

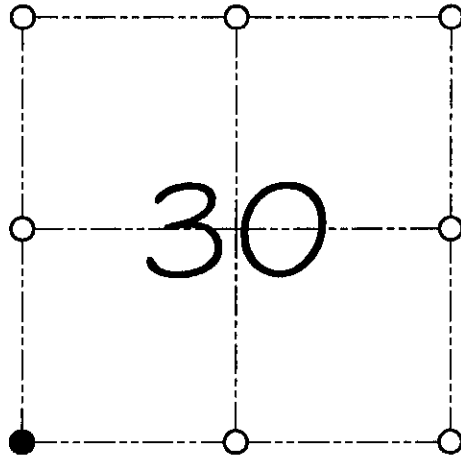
I, Larry L. Austin, do hereby certify that on the 7th day of March, 2000, I found no evidence of the Southwest corner of Section 30, Town 7 North, Range 3 West, of the 4th Principal Meridian, and I re-established said corner according to the Wisconsin statutes as shown and described hereon.

Dated this 22nd day of March, 2000

Larry L. Austin S-1903



SEAL



**SOUTHWEST CORNER OF  
SECTION 30, T 7 N R 3 W  
TOWN OF MARION**

**HISTORY OF ORIGINAL CORNER ESTABLISHMENT:**

Corner was originally set in 1832 by Sibley.  
In 1880 Joel Barber found the original corner in good order.

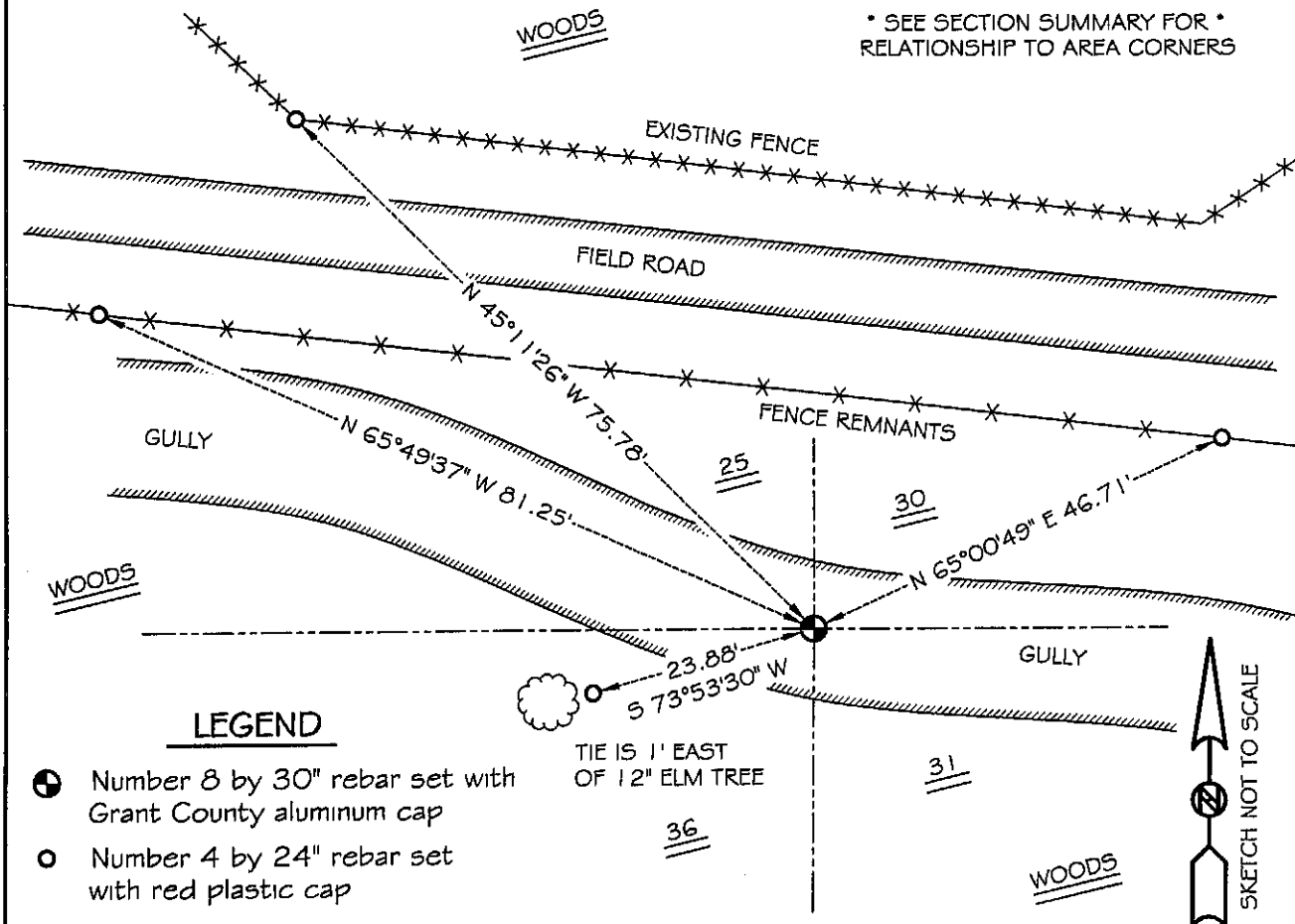
**DESCRIPTION OF CORNER EVIDENCE FOUND:**

I found no evidence of the corner. I reset the corner by proportioning all four ways. Verified this location using E.D.M. & G.P.S. methods.

**DESCRIPTION OF CORNER AND WITNESS MONUMENTS, references and accessories used to perpetuate the original or re-established location of this corner**

WITNESS TO THE CORNER LOCATION: SHANE AUSTIN & SHELBY BLINDERT

**SKETCH:**



**LEGEND**

- Number 8 by 30" rebar set with Grant County aluminum cap
- Number 4 by 24" rebar set with red plastic cap

TIE IS 1' EAST OF 12" ELM TREE

SKETCH NOT TO SCALE