

1169

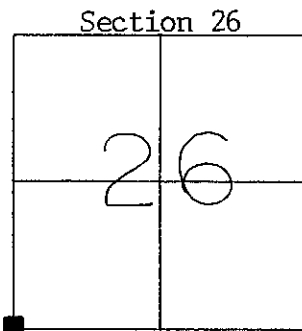
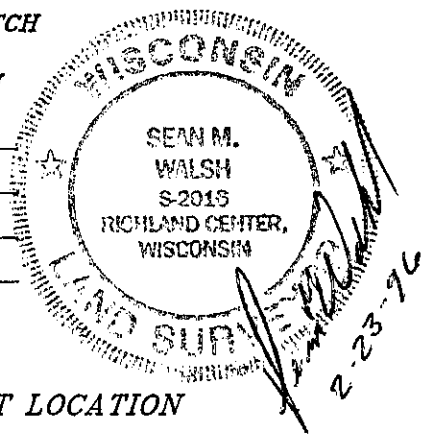
FEB 26 1996

GRANT COUNTY U.S. PUBLIC LAND SURVEY MONUMENT RECORD

TYPE OF MONUMENT: 3/4" Diameter Iron Rod
TIES ARE AS INDICATED ON SKETCH

WITNESSES TO CORNER LOCATION

Sean M. Walsh
Christopher G. Reedy



CORNER LOCATION
T7N, R3W
Town of Marion

BASIS FOR MONUMENT LOCATION

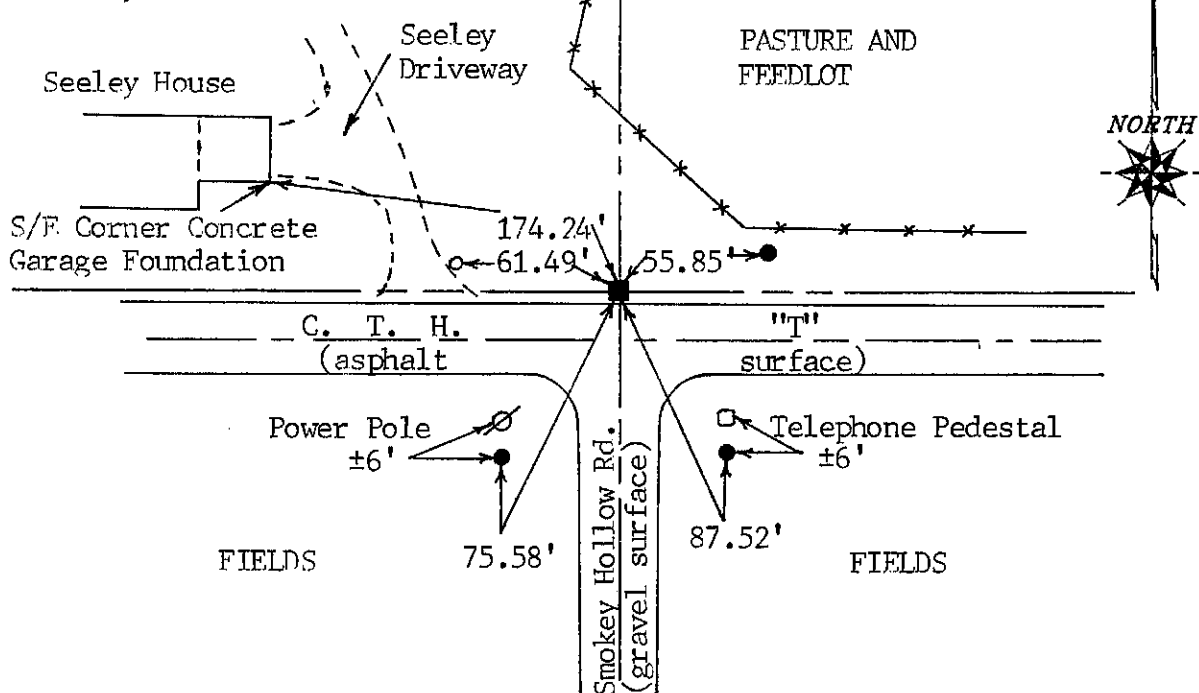
I, Sean M. Walsh, Registered Land Surveyor, do hereby certify that I have accepted and perpetuated this corner as shown hereon and that this information is correct and true to the best of my information, knowledge and belief.

This corner was previously established and monumented by Mr. L. Schmitt. Some of the ties used by Mr. Schmitt do not comply with the minimum standards set forth in chapter AE.07 of the Wisconsin Administrative Code, thus I have perpetuated as shown hereon.

- - 3/4" X 24" Iron Rod Set as Tie
- - 3/4" Iron Pipe Set as Tie by L. Schmitt

TIE SKETCH

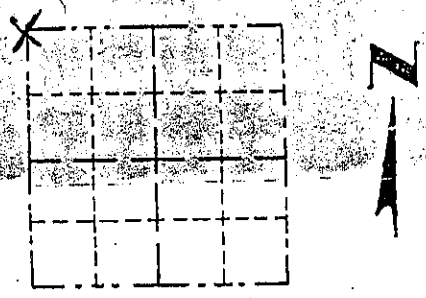
Tie distances measured horizontally by EDM.



CRAWFORD COUNTY
Survey Monument Record

CORNER NO. _____
SECTION 35
TOWN _____
RANGE 3
FEB 19 1996

TYPE OF MONUMENT _____
STATE PLANE COORDINATES: N _____
E _____
ELEVATION — M.S.L. DATUM: _____
THETA ANGLE: _____
FIELD BOOK: 9A-A
PAGE 13



LOCATION
(Indicated by "X")

BASIS FOR MONUMENT LOCATION

(Use reverse side if necessary)
Show info such as: History of corner, with reference to Vol. and pg., dates, surveyor; exact description of monument replaced; if location computed, by taped or EDM traverse; landowner, remarks, etc.

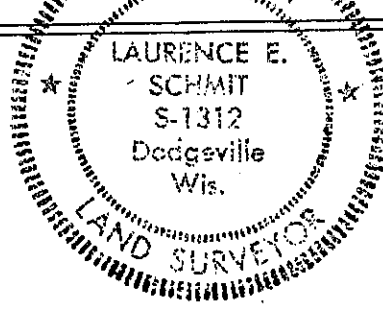
SEAL:

EVIDENCE NEAR CORNER IS E. CTH "T" & FENCELINE TO NORTH. HISTORY IS ORIG. GOV'T SURVEY. CORNER LOCATION WAS DETERMINED BY DOUBLE PROPORTIONATE MEASUREMENT TO ORIGINAL GOV'T SURVEY. THE OCCUPIED N 1/4 CORNER OF 34-7-3W & 1" IRON PIPE FOUND AT THE N 1/4 CORNER OF 35-7-3W WAS USED FOR EAST-WEST PRORATE. THE PRORATE BETWEEN THE COMPUTED SW CORNER 35-7-3W & FENCELINE WEST AT OCCUPIED NE CORNER OF SE 1/4 - NE 1/4 OF 27-7-3W BEST FITS EVIDENCE FOUND ALONG THE E LINES OF SECTIONS 34 & 27. THE FINAL CORNER LOCATION FITS WELL WITH THE CENTERLINE OF CTH "T" BUT LIES 8' EAST OF N-S LINE FENCE PROJECTED S NEAR CORNER.

CERTIFIED CORRECT
Laurence E. Schmit

Registered Land Surveyor

DATE WISCONSIN 28 1995



TIE SKETCH

Show at least three (4) ties and monument

LEGEND

- Nail in Power Pole
- TELEPHONE PEDESTAL
- IRON PIPE
- REBAR
- × × FENCE

1/2" IP 1.0' EAST OF MAILBOX @ FIRE SIGN # 5712

3/4" REBAR 1.0' NORTH OF CTH "T" @ SMOKEY HOLLOW RD

1" = 40'
NAIL 1.0' UP SOUTH SIDE OF POWER POLE

