

Marion

APR 11 1988

RECEIVED

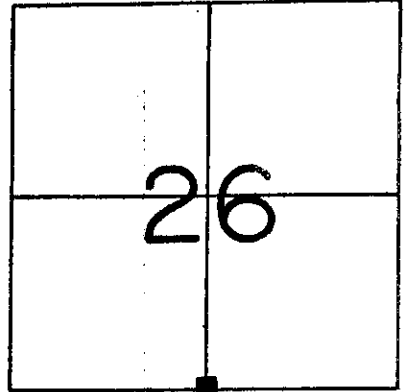
U. S. PUBLIC LAND SURVEY MONUMENT RECORD

GRANT County, Wisconsin.

Basis for monument location.

Corner established by H. Parke in 1833. Only other reference to corner was in 1980 by K. Kerst, which a iron pipe was in place. This iron I located and it fit well with occupation and I referenced it as shown hereon. Distance to Southeast Corner measured 2628.55'. Government survey NORTH called for 2634.39'.

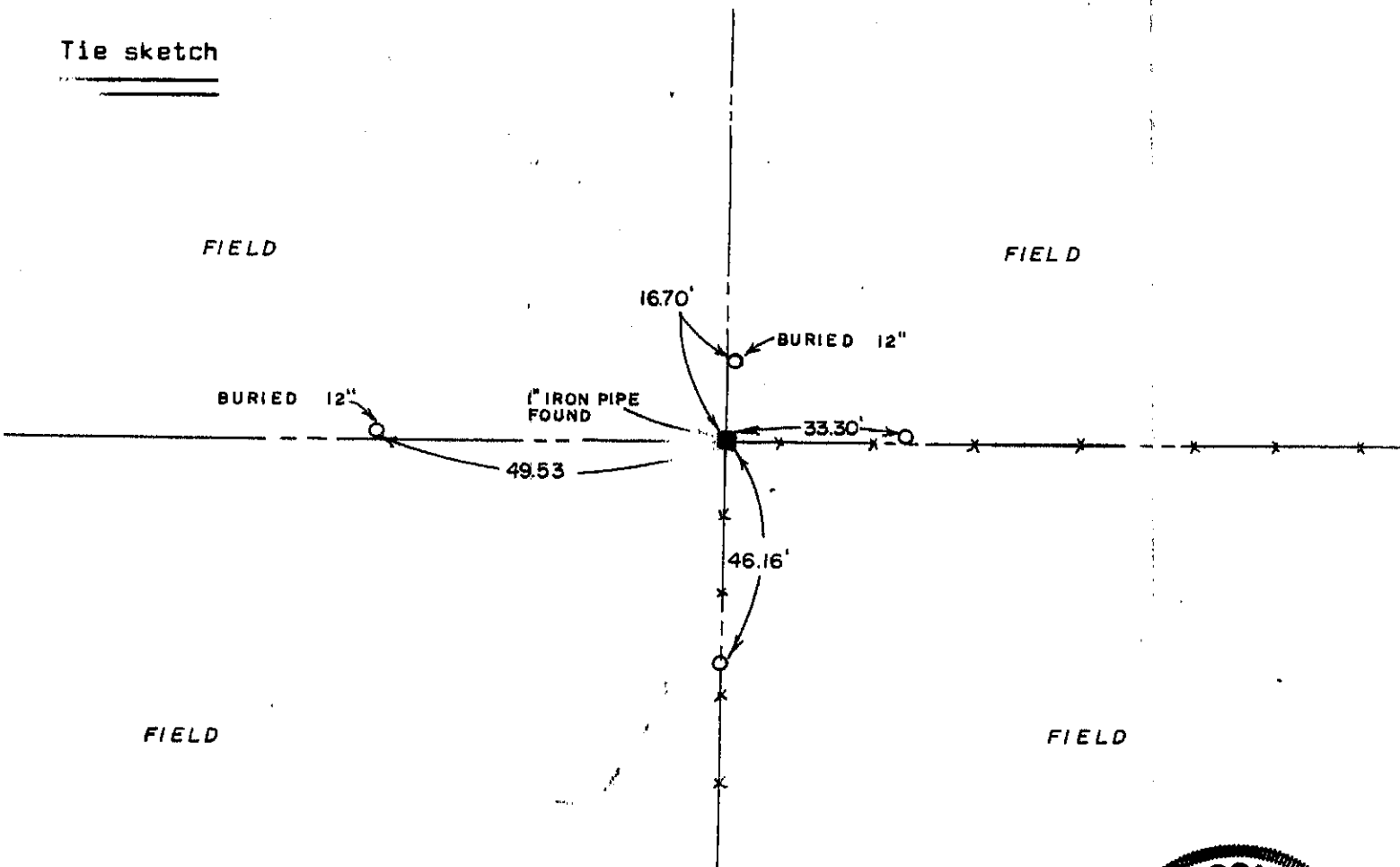
Section 26, T 7 N, R 3 W



Corner Location  
(Indicate by - ■ )

O - 3/4" X 24" RE-BAR PLACED

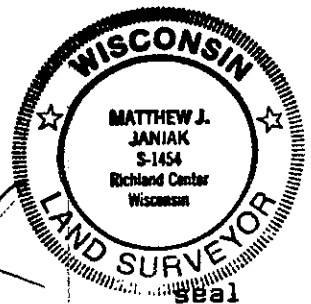
Tie sketch



I, Matthew J. Janiak Certify that the corner location shown hereon this record was determined by me or under my direction and control and that this U. S. Public Land Survey Monument Record is correct and complete to the best of my knowledge and belief.

3-20-88  
Date

*Matthew J. Janiak*  
Registered Land Surveyor



P-104