

**U.S. PUBLIC LAND SURVEY MONUMENT RECORD - GRANT COUNTY, WI**

Section 36, Town 7 North Range 3 West, Town of Marion (a)

NOTE: This form is intended and designed to fulfill all requirements of the Wisconsin Administrative Code Chapter A-E 7.08, U.S. Public Land Survey Monument Record (3) (a) (b) (c) (d) (e) (f) (g) (h) (i).

**CERTIFICATE: (i)**

I, Aaron J. Austin, Wisconsin Professional Land Surveyor, do hereby certify that the corner location on this record was determined by me and/or under my direct supervision and that this U.S. Public Land Survey Monument Record is correct and complete to the best of my knowledge and belief.

Dated this 10th day of April, 2020.

*Aaron J. Austin*  
 Aaron J. Austin, S-2922



⊕ = CORNER LOCATION

Grant County Coordinates:  
 NAD 83 (2011)  
 Northing: 596,048.64  
 Easting: 825,595.82

HISTORY OF CORNER ESTABLISHMENT:

Robert Original corner was set in 1833 by Harvey Parke.  
 Matthew Janiak found a stone and prepared a Survey Monument Record dated 3/28/1988.  
 Sean Walsh found a stone and prepared a Survey Monument Record dated 2/23/1996.  
 Larry Austin found a disturbed Stone and set a 1" rebar with a Grant County Aluminum cap and prepared a Survey Monument Record dated 6/25/1999.

DESCRIPTION OF CORNER EVIDENCE FOUND: (b) (f) (g) (h)

I found the 1" rebar with a Grant County Aluminum cap Larry set. I set four witness corners after I verified the Monument's location with G.P.S. and E.D.M. methods.

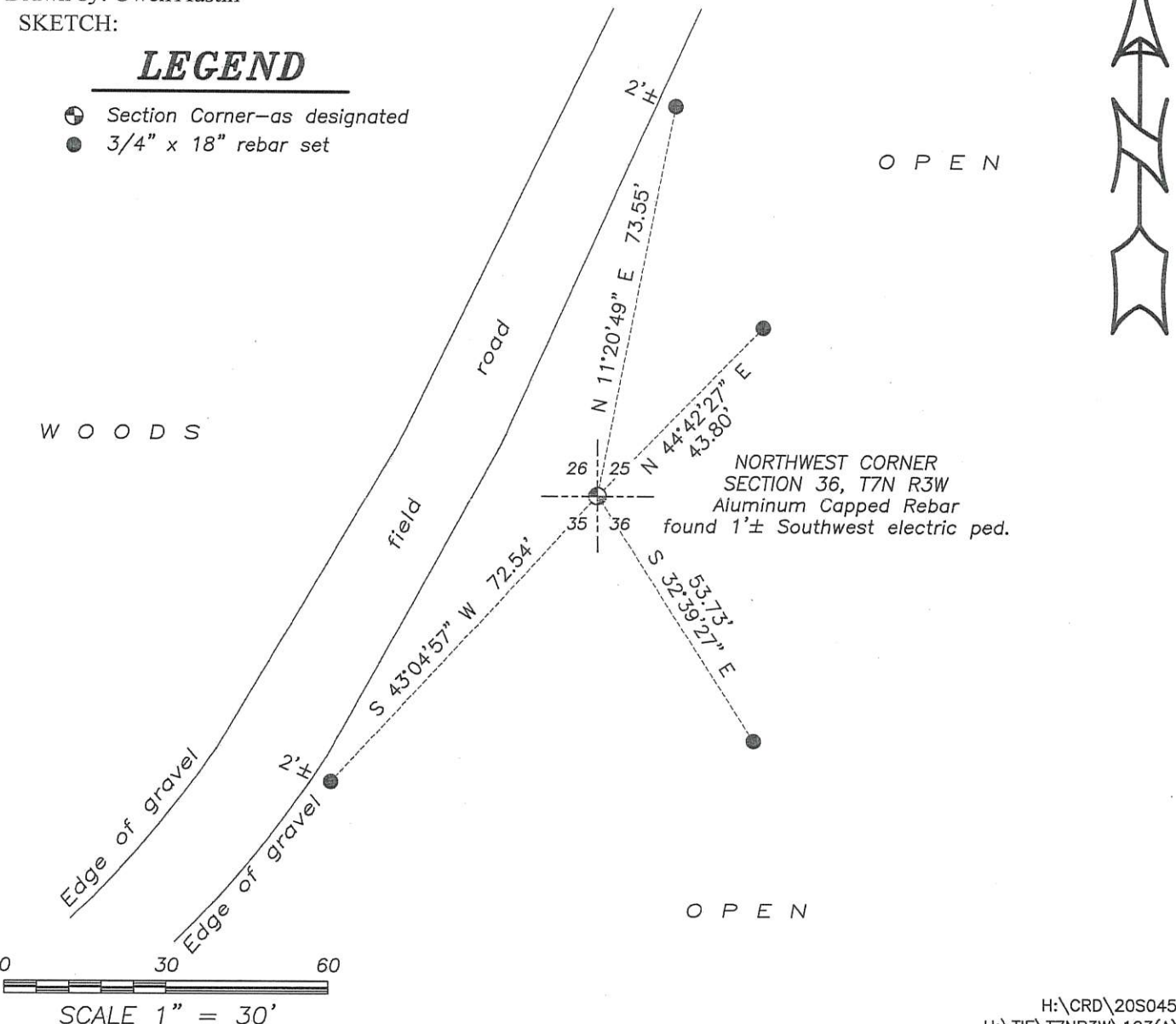
DESCRIPTION OF CORNER AND WITNESS MONUMENTS: references and accessories used to perpetuate the original or re-established location of this corner. (c) (d) (e)

Witnesses to corner location Shane Austin, Owen Austin.  
 Drawn by: Owen Austin

SKETCH:

**LEGEND**

- ⊕ Section Corner—as designated
- 3/4" x 18" rebar set



# GRANT COUNTY CERTIFIED LAND CORNER

CORNER NUMBER 103

**CERTIFICATE:**

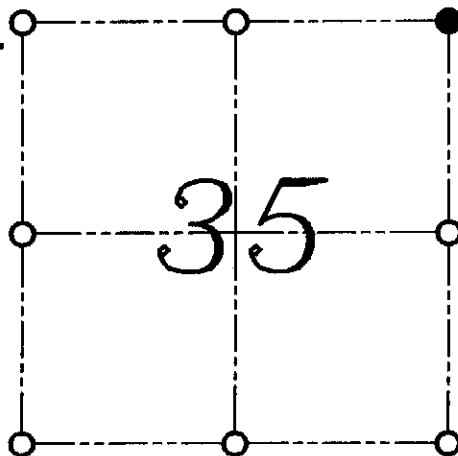
I, LARRY L. AUSTIN, DO HEREBY CERTIFY THAT ON TWENTY-FOURTH DAY OF JUNE, 1999, I FOUND MONUMENTED EVIDENCE OF THE NORTHEAST CORNER SECTION 35, TOWN 7 NORTH, RANGE 3 WEST, OF THE FOURTH PRINCIPAL MERIDIAN, AND I RE-ESTABLISHED SAID CORNER ACCORDING TO THE WISCONSIN STATUTES AS SHOWN AND DESCRIBED HEREON.

DATED THIS TWENTY-FIFTH DAY OF JUNE, 1999

*Larry L. Austin*  
LARRY L. AUSTIN S-1903



SEAL



● = CORNER LOCATION  
NORTHEAST CORNER OF  
SECTION 35, T 7 N R 3 W  
TOWN OF MARION

**HISTORY OF ORIGINAL CORNER ESTABLISHMENT:**

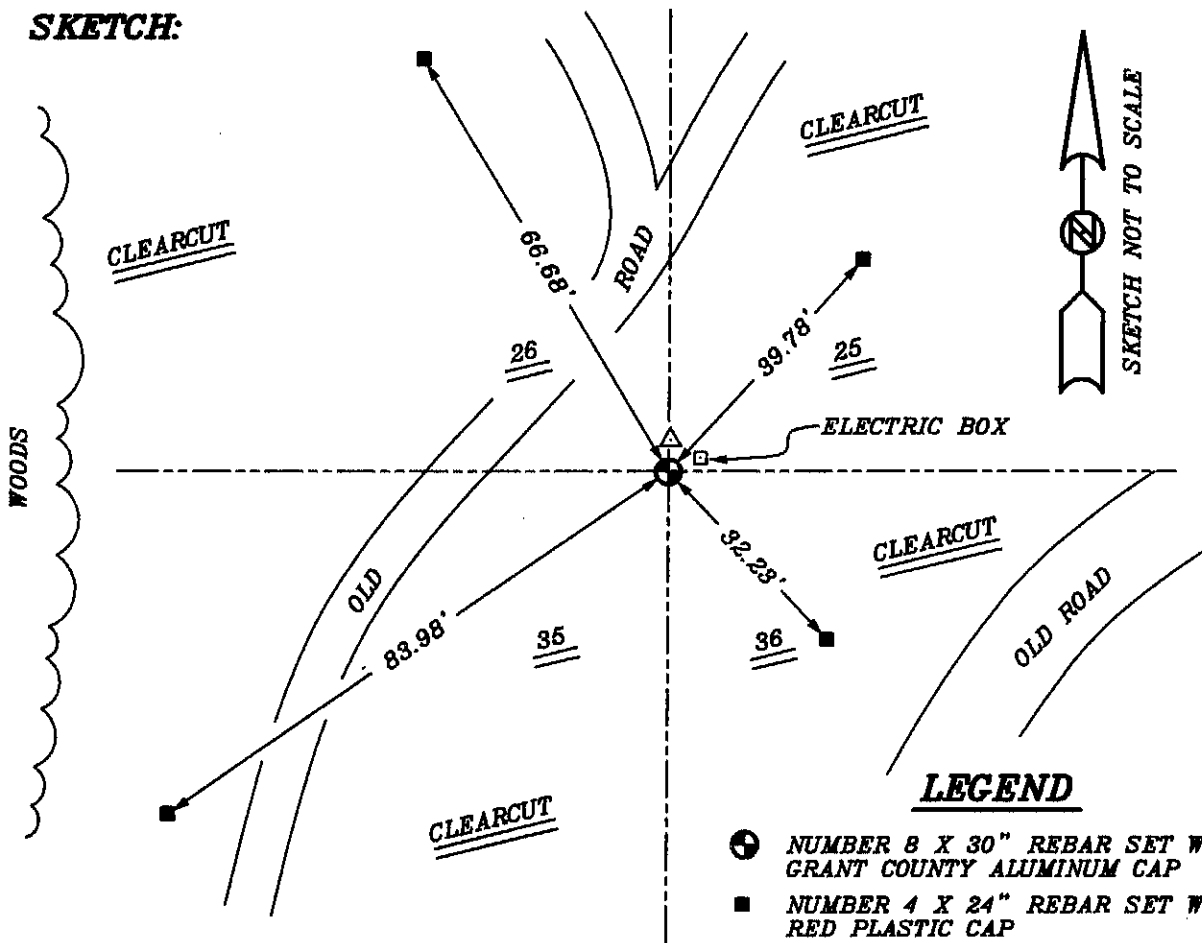
CORNER WAS SET IN 1833 BY HARVEY PARKE. IN 1988 MATTHEW JANIAK FOUND A STONE. IN 1996 SEAN WALSH ALSO FOUND THE STONE.

**DESCRIPTION OF CORNER EVIDENCE FOUND:**

I FOUND THE STONE LAYING ON THE GROUND NEXT TO A NEW ELECTRIC BOX. I RESET THE CORNER BASED ON WALSH'S TIES. VERIFIED THIS LOCATION USING E.D.M. AND G.P.S. METHODS.

**DESCRIPTION OF CORNER AND WITNESS MONUMENTS, REFERENCES AND ACCESSORIES USED TO PERPETUATE THE ORIGINAL OR RE-ESTABLISHED LOCATION OF THIS CORNER:**  
WITNESS TO THE CORNER LOCATION: BOBBY SEDGWICK ; SHELBY BLINDERT

**SKETCH:**



**LEGEND**

- ⊙ NUMBER 8 X 30" REBAR SET WITH GRANT COUNTY ALUMINUM CAP
- NUMBER 4 X 24" REBAR SET WITH RED PLASTIC CAP
- △ 1" IRON PIPE FOUND

W 168

101  
100

# GRANT COUNTY

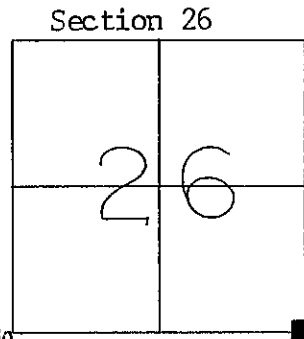
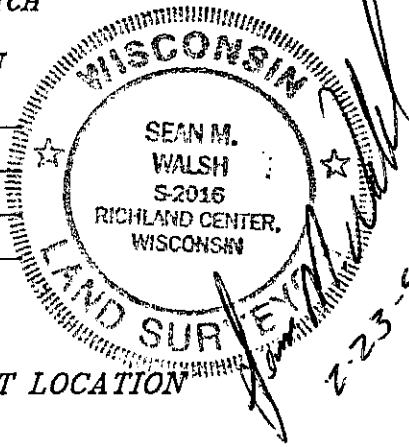
FEB 26 1996

## U.S. PUBLIC LAND SURVEY MONUMENT RECORD

TYPE OF MONUMENT: 3/4" Diameter Hole in Stone  
TIES ARE AS INDICATED ON SKETCH

WITNESSES TO CORNER LOCATION

Sean M. Walsh  
Christopher G. Reedy



CORNER LOCATION

T7N, R3W  
Town of Marion

BASIS FOR MONUMENT LOCATION

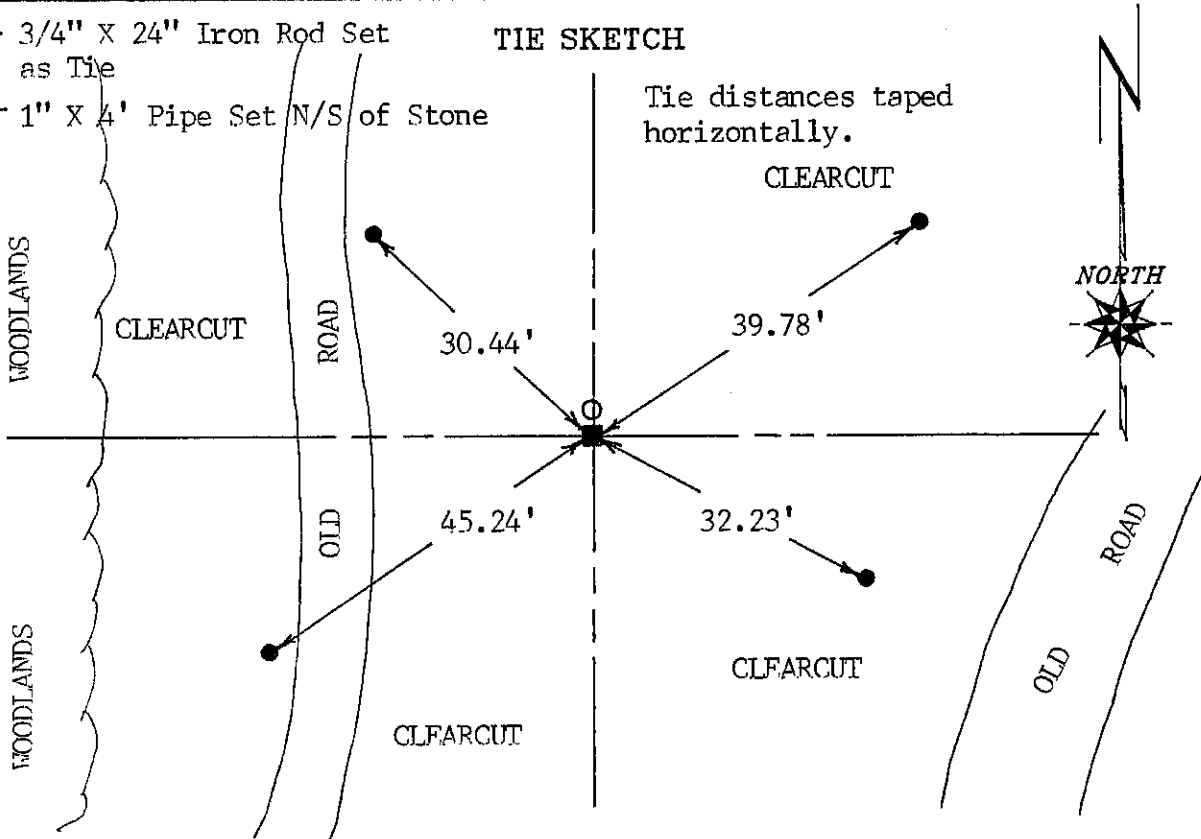
I, Sean M. Walsh, Registered Land Surveyor, do hereby certify that I have accepted and perpetuated this corner as shown hereon and that this information is true and correct to the best of my information, knowledge and belief.

This corner was previously perpetuated by Mr. Matthew Janiak in 1988, of which none remain in good condition, thus I have perpetuated as show hereon.

- - 3/4" X 24" Iron Rod Set as Tie
- - 1" X 4' Pipe Set N/S of Stone

TIE SKETCH

Tie distances taped horizontally.



Marion  
 11 1863  
 RECEIVED

U. S. PUBLIC LAND SURVEY MONUMENT RECORD

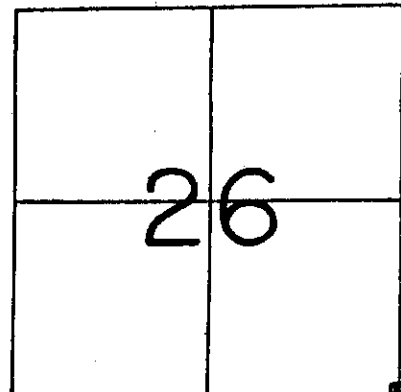
GRANT County, Wisconsin.

Basis for monument location.

No fererence to the corner since it was established by H. Parke in 1833. Original notes referenced springs to the East and South. Springs stills exist. Measured distances of record from springs, 1.80 chains West and 1.40 North form old spring bed and located a stone (8"x12") length unknown but at least 26", at this point. Accepted it as the correct corner and referenced it as shown. Distance to South One-quarter Corner measured 2628.55 as compared to the Government Survey distance of 2634.39'.



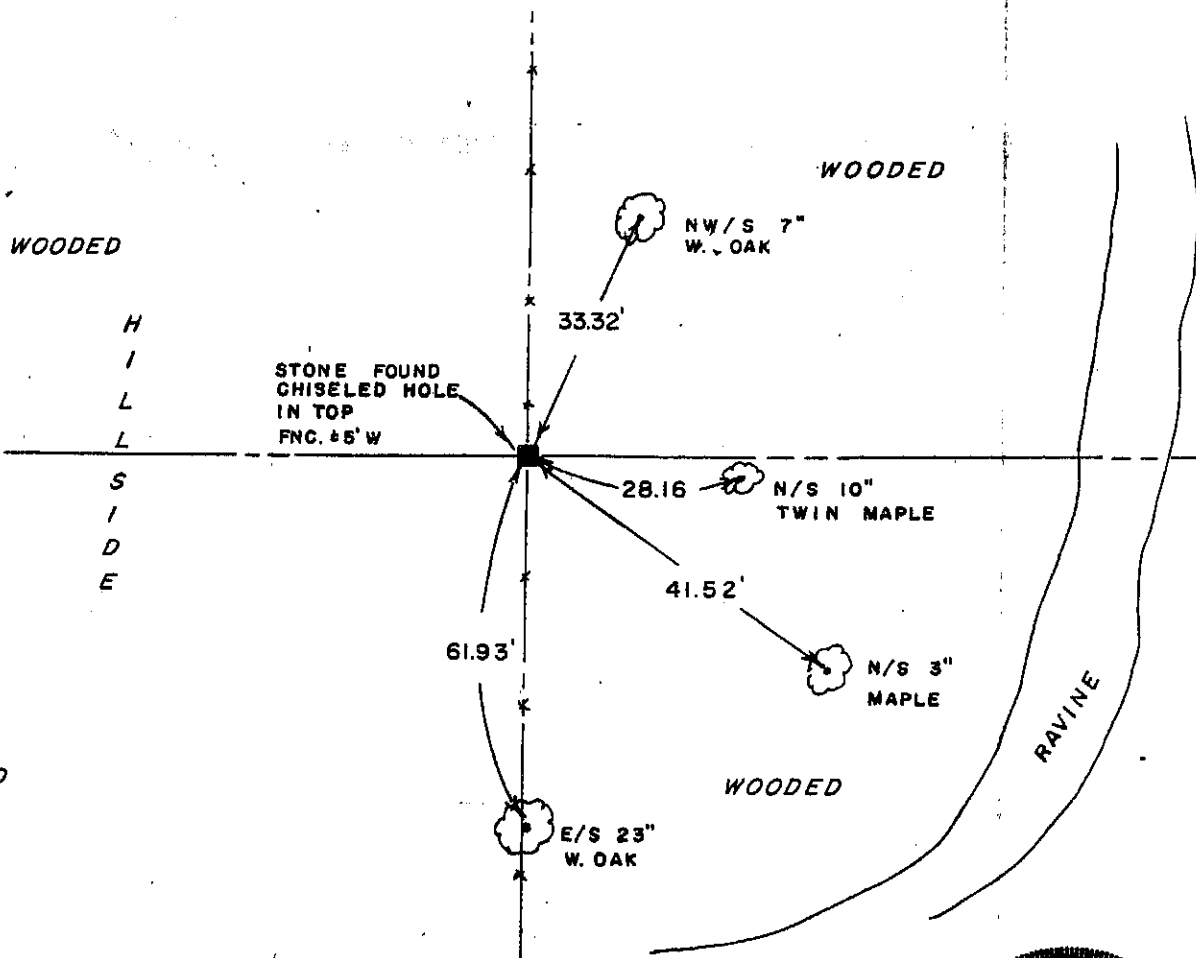
Section 26, T7 N, R3 W



Corner Location  
 (Indicate by - ■ )

TIES: 20d POLESPIKES SET IN BLAZE AT BOTTOM OF TREES

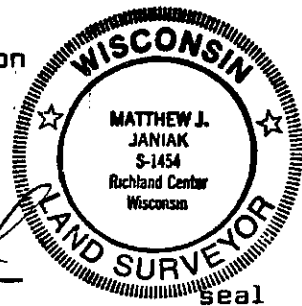
Tie sketch



I, Matthew J. Janiak Certify that the corner location shown hereon this record was determined by me or under my direction and control and that this U. S. Public Land Survey Monument Record is correct and complete to the best of my knowledge and belief.

3-20-88  
 Date

*Matthew J. Janiak*  
 Registered Land Surveyor



103