

U.S. PUBLIC LAND SURVEY MONUMENT RECORD - GRANT COUNTY, WI

Section 25, Town 7 North Range 3 West, Town of Marion (a)

NOTE: This form is intended and designed to fulfill all requirements of the Wisconsin Administrative Code Chapter A-E 7.08, U.S. Public Land Survey Monument Record (3) (a) (b) (c) (d) (e) (f) (g) (h) (i).

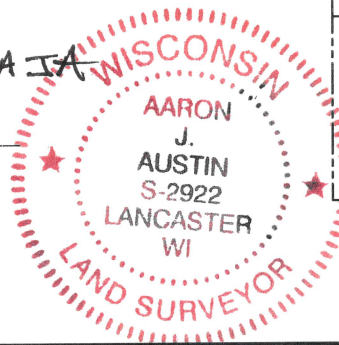
CERTIFICATE: (i)

I, Aaron J. Austin, Wisconsin Professional Land Surveyor, do hereby certify that the corner location on this record was determined by me and/or under my direct supervision and that this U.S. Public Land Survey Monument Record is correct and complete to the best of my knowledge and belief.

Dated this 17th day of June, 2020.

Revised this 8th day of July, 2024.

Aaron J. Austin
 Aaron J. Austin, S-2922



⊕ = CORNER LOCATION

Grant County Coordinates:
 NAD 83 (2011)
 Northing: 598,704.46
 Easting: 830,817.25

HISTORY OF CORNER ESTABLISHMENT:

Original corner was set in 1832 by Sibley.
 Sean Walsh set a 3/4" Rebar on a Survey dated 5/29/1997.
 Larry Austin set a 1" rebar with a Grant County Aluminum Cap and prepared a Survey Monument Record dated 11/25/2000.

DESCRIPTION OF CORNER EVIDENCE FOUND: (b) (f) (g) (h)

I found a 3/4" rebar Sean Walsh set on a Survey in Book Z, Page 6 dated 5/29/1997. Larry Austin's Monument was not found. I accepted Walsh's location and established four witness corners after I verified the Monument's location with G.P.S. and E.D.M. methods.

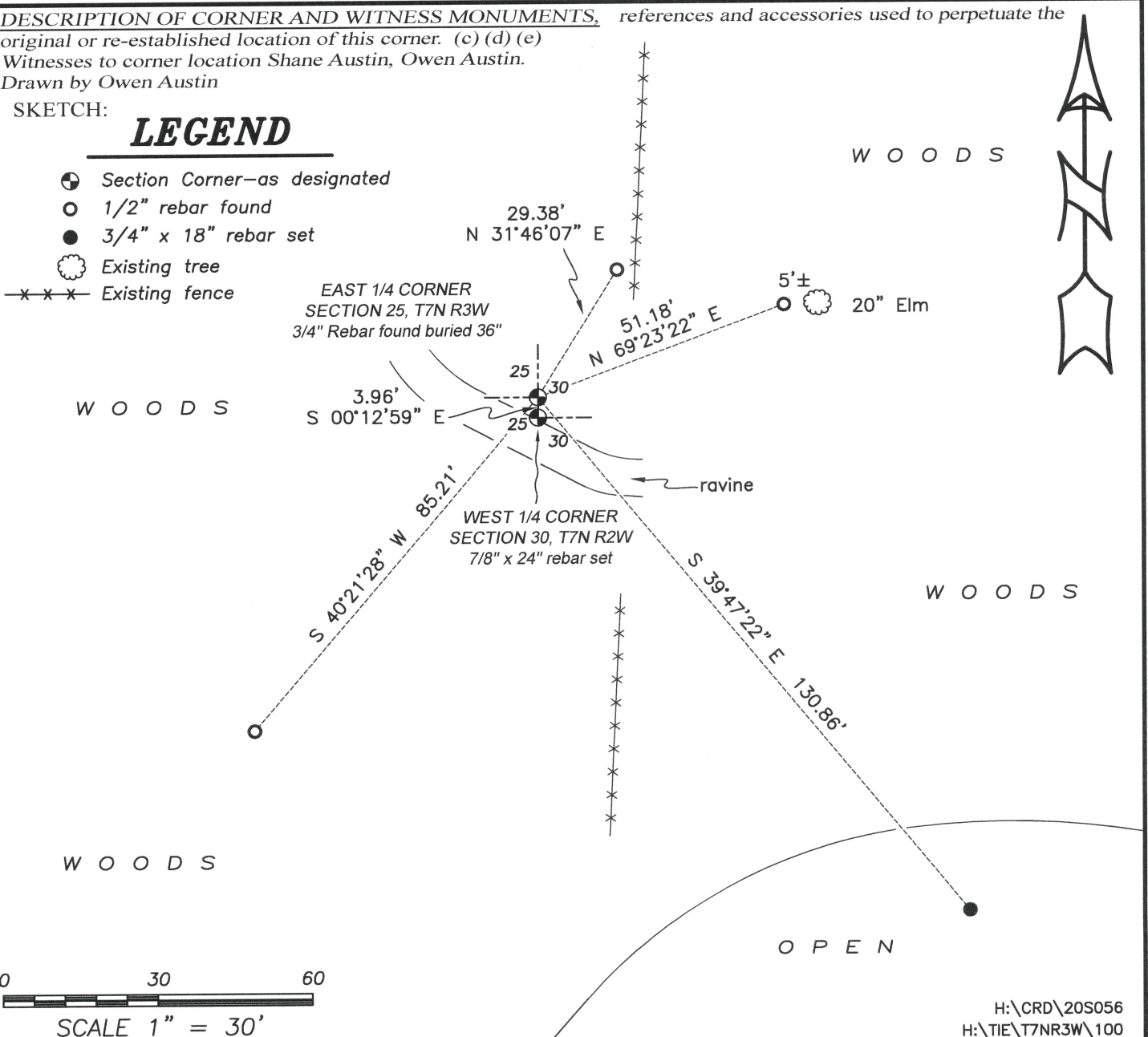
DESCRIPTION OF CORNER AND WITNESS MONUMENTS, references and accessories used to perpetuate the original or re-established location of this corner: (c) (d) (e)

Witnesses to corner location Shane Austin, Owen Austin.
 Drawn by Owen Austin

SKETCH:

LEGEND

- ⊕ Section Corner—as designated
- 1/2" rebar found
- 3/4" x 18" rebar set
- ⊙ Existing tree
- x-x-x- Existing fence



U.S. PUBLIC LAND SURVEY MONUMENT RECORD - GRANT COUNTY, WI

Section 25, Town 7 North Range 3 West, Town of Marion (a)

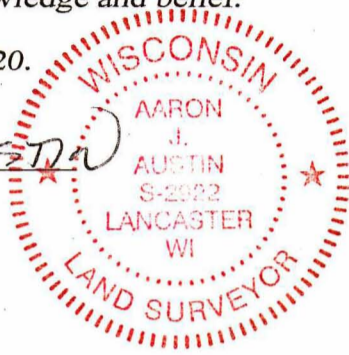
NOTE: This form is intended and designed to fulfill all requirements of the Wisconsin Administrative Code Chapter A-E 7.08, U.S. Public Land Survey Monument Record (3) (a) (b) (c) (d) (e) (f) (g) (h) (i).

CERTIFICATE: (i)

I, Aaron J. Austin, Wisconsin Professional Land Surveyor, do hereby certify that the corner location on this record was determined by me and/or under my direct supervision and that this U.S. Public Land Survey Monument Record is correct and complete to the best of my knowledge and belief.

Dated this 17th day of June, 2020.

Aaron J. Austin
Aaron J. Austin, S-2922



⊙ = CORNER LOCATION

Grant County Coordinates:
NAD 83 (2011)
Northing: 598,700.50
Easting: 830,817.27

HISTORY OF CORNER ESTABLISHMENT:

Original corner was set in 1832 by Sibley.
Sean Walsh set a 3/4" Rebar on a Survey dated 5/29/1997.
Larry Austin set a 1" rebar with a Grant County Aluminum Cap and prepared a Survey Monument Record dated 11/25/2000.

DESCRIPTION OF CORNER EVIDENCE FOUND: (b) (f) (g) (h)

I found a 3/4" rebar Sean Walsh set on a Survey in Book Z, Page 6 dated 5/29/1997. Larry Austin's Monument was not found. I accepted Walsh's location and established four witness corners after I verified the Monument's location with G.P.S. and E.D.M. methods.

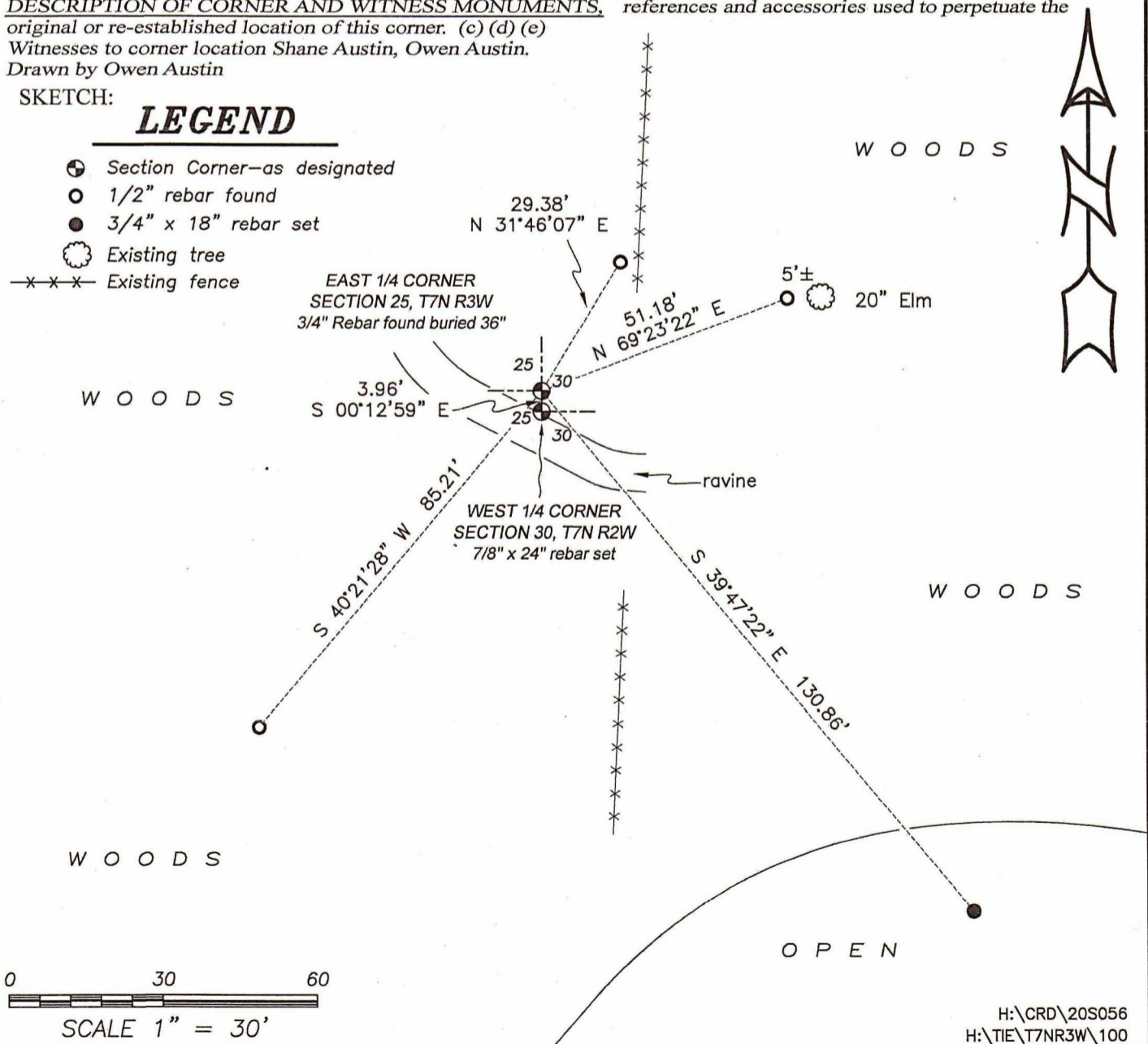
DESCRIPTION OF CORNER AND WITNESS MONUMENTS, references and accessories used to perpetuate the original or re-established location of this corner. (c) (d) (e)

Witnesses to corner location Shane Austin, Owen Austin.
Drawn by Owen Austin

SKETCH:

LEGEND

- ⊙ Section Corner—as designated
- 1/2" rebar found
- 3/4" x 18" rebar set
- ⊙ Existing tree
- x-x-x- Existing fence



GRANT COUNTY CERTIFIED LAND CORNER

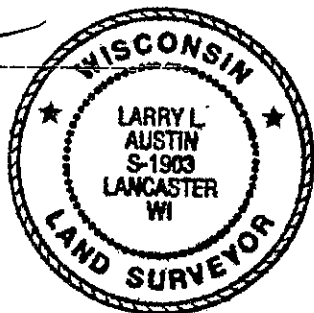
CORNER NUMBER 100

CERTIFICATE:

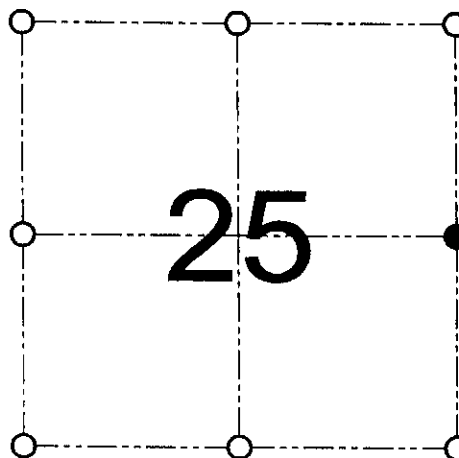
I, Larry L. Austin, do hereby certify that on the 13th day of April, 2000, I found evidence of the East 1/4 corner of Section 25, Town 7 North, Range 3 West, of the 4th Principal Meridian, and I re-established said corner according to the Wisconsin statutes as shown and described hereon.

Dated this 25th day of November, 2000

Larry L. Austin
Larry L. Austin S-1903



SEAL



● = CORNER LOCATION
EAST 1/4 CORNER OF SECTION 25, T 7 N R 3 W TOWN OF MARION

HISTORY OF ORIGINAL CORNER ESTABLISHMENT:

Corner was originally set in 1832 by Sibley. In 1997 Walsh set a #6 iron bar at this location. No other record of the corner was found.

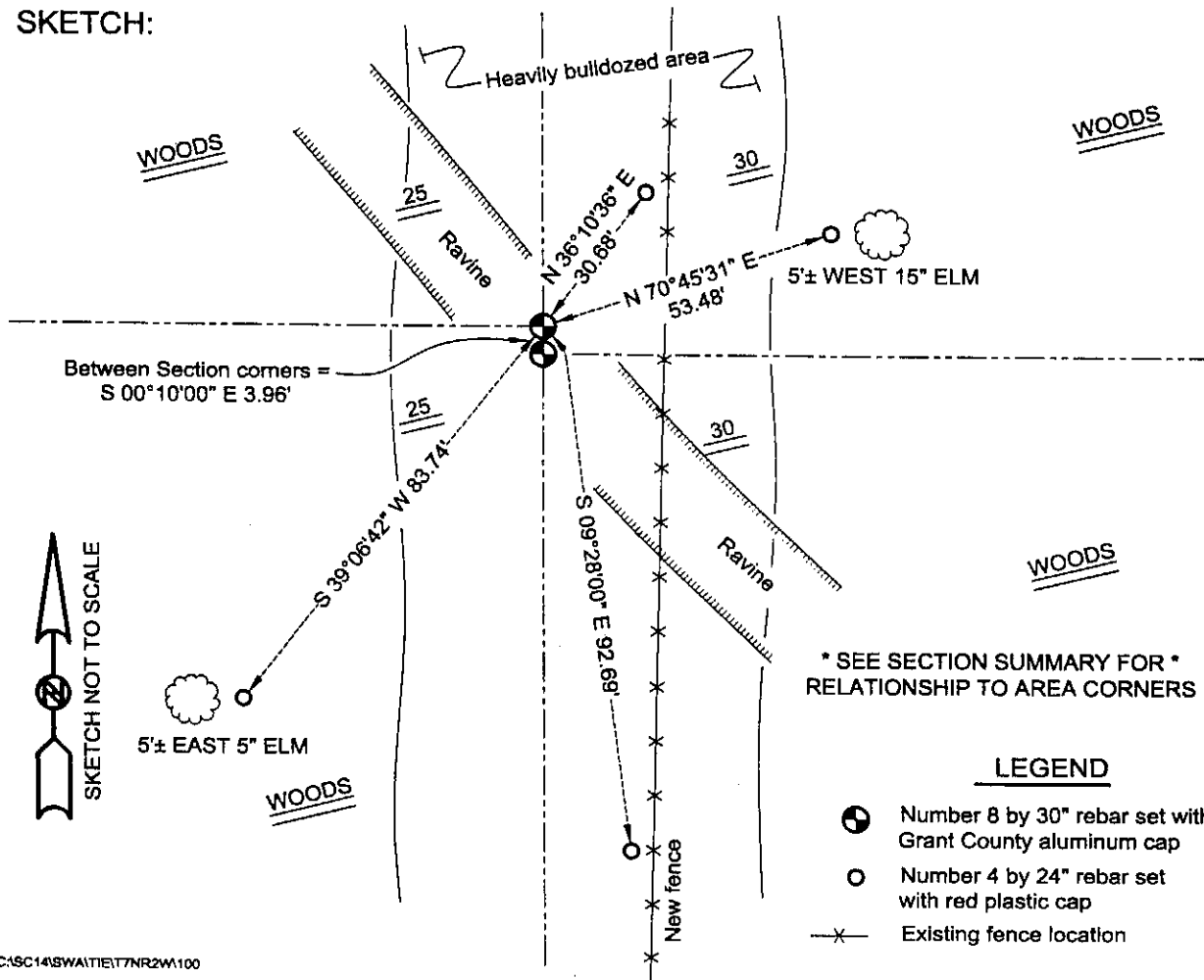
DESCRIPTION OF CORNER EVIDENCE FOUND:

I found no evidence in the area to the location of Walsh's corner. I reset it based on Walsh's location. This location was verified using EDM & GPS methods.

DESCRIPTION OF CORNER AND WITNESS MONUMENTS, references and accessories used to perpetuate the original or re-established location of this corner

WITNESS TO THE CORNER LOCATION: SHANE AUSTIN & SHELBY BLINDERT & BOBBY SEDGWICK

SKETCH:



* SEE SECTION SUMMARY FOR *
RELATIONSHIP TO AREA CORNERS

LEGEND

- Number 8 by 30" rebar set with Grant County aluminum cap
- Number 4 by 24" rebar set with red plastic cap
- X— Existing fence location

REC'D JUN 4 1997

GRANT COUNTY U.S. PUBLIC LAND SURVEY MONUMENT RECORD

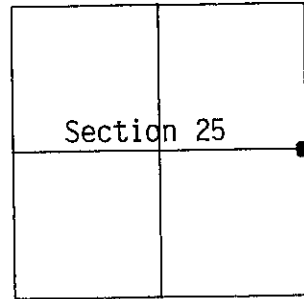
East 1/4 corner Section 25, 7-3W

TYPE OF MONUMENT:
TIES ARE AS INDICATED ON SKETCH

WITNESSES TO CORNER LOCATION

Christopher G. Reedy

Christopher J. Ruetten



CORNER LOCATION

BASIS FOR MONUMENT LOCATION

Subsequent to the Original Gov't. Survey, no record evidence of this corner could be located.

This corner has been re-established at a location which is at the mid-point along the occupied East line of Section 25.

This information is correct and true to the best of my information, knowledge and belief.

- -- 3/4" x 24" iron rod set at corner
- -- 3/4" x 24" iron rod set at witness tie

TIE SKETCH

