

U.S. PUBLIC LAND SURVEY MONUMENT RECORD - GRANT COUNTY, WI

Section 27, Town 7 North Range 3 West, Town of Marion (a)

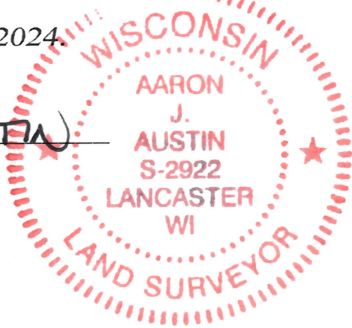
NOTE: This form is intended and designed to fulfill all requirements of the Wisconsin Administrative Code Chapter A-E 7.08, U.S. Public Land Survey Monument Record (3) (a) (b) (c) (d) (e) (f) (g) (h) (i).

CERTIFICATE: (i)

I, Aaron J. Austin, Wisconsin Professional Land Surveyor, do hereby certify that the corner location on this record was determined by me and/or under my direct supervision and that this U.S. Public Land Survey Monument Record is correct and complete to the best of my knowledge and belief.

Dated this 19th day of June, 2024.

Aaron J. Austin
Aaron J. Austin, S-2922



⊕ = CORNER LOCATION

Grant County Coordinates:
NAD 83 (2011)
Northing: 598,698.51
Easting: 820,301.55

HISTORY OF CORNER ESTABLISHMENT:

Original corner was set in 1833 by Harvey Parke.
Sean Walsh set a 3/4" Rebar and prepared a Survey Monument Record dated 2-23-1996.

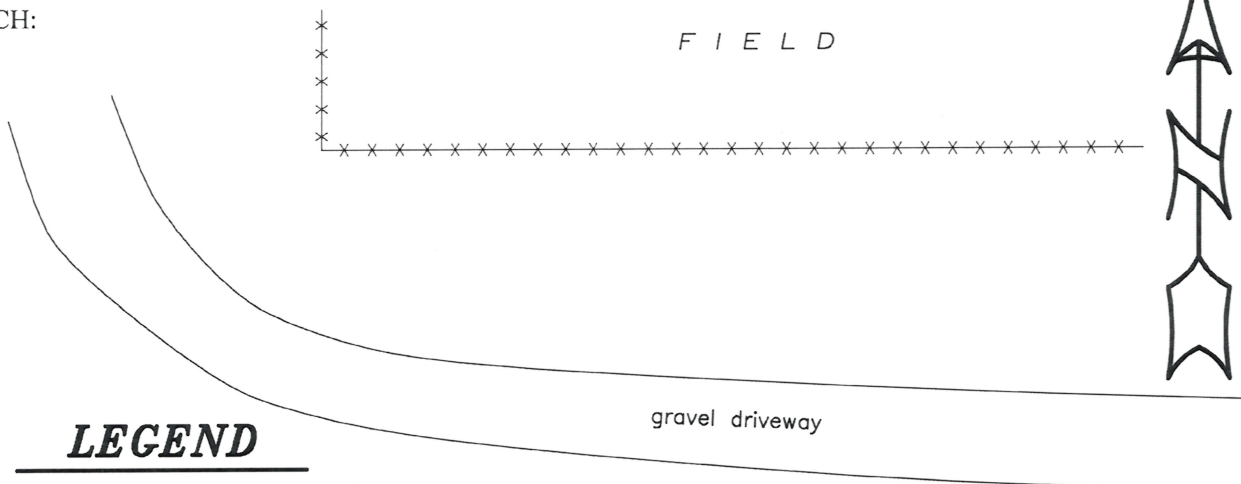
DESCRIPTION OF CORNER EVIDENCE FOUND: (b) (f) (g) (h)

I found the 3/4" Rebar Walsh set. I set four witness corners and verified the Monument's location with G.P.S. and E.D.M. methods.

DESCRIPTION OF CORNER AND WITNESS MONUMENTS: references and accessories used to perpetuate the original or re-established location of this corner. (c) (d) (e)

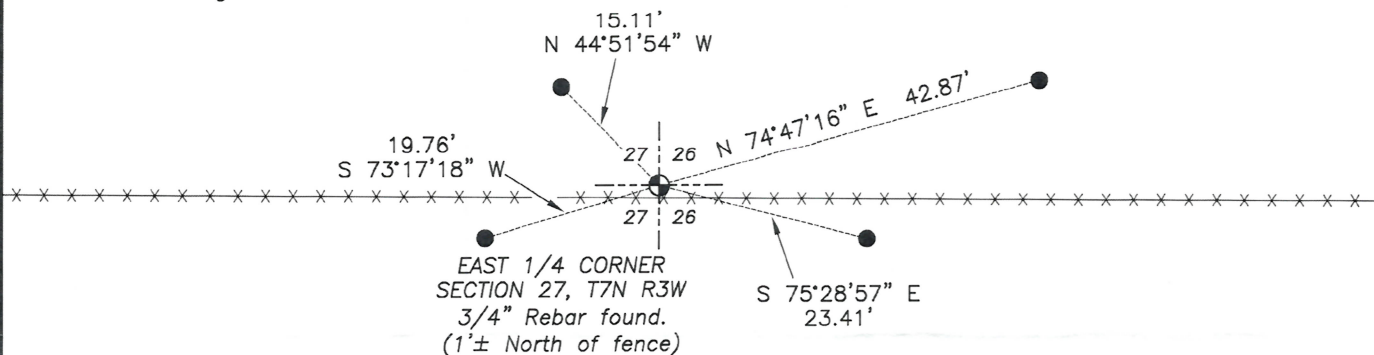
Witnesses to corner location Owen Austin, Tanner Austin.
Drawn by: Owen Austin.

SKETCH:

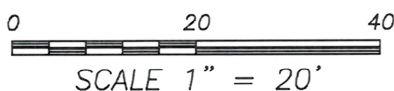


LEGEND

- ⊕ Section Corner—as designated
- 3/4" x 18" rebar set
- x-x-x- Existing fence



F I E L D



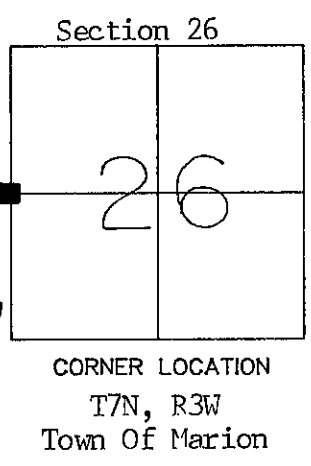
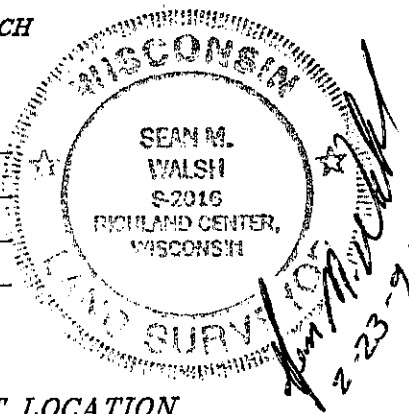
W73

FEB 26 1993

GRANT COUNTY U.S. PUBLIC LAND SURVEY MONUMENT RECORD

TYPE OF MONUMENT: 3/4" X 24" Iron Rod
TIES ARE AS INDICATED ON SKETCH

WITNESSES TO CORNER LOCATION
Sean M. Walsh
Christopher G. Reedy



BASIS FOR MONUMENT LOCATION

I, Sean M. Walsh, Registered Land Surveyor, do hereby certify that I have re-established this corner in accordance with the information contained hereon and that this information is correct and true to the best of my information, knowledge and belief.

No acceptable evidence exists indicating the position for this corner, thus I have re-established said corner at the location where a straight line between the Northwest and Southwest Corners of the Section intersect the line of physical occupation running East and West.

● - 3/4" X 24" Iron Rod Set and Buried ±12" as Tie
Tie distances measured horizontally by EDM.

TIE SKETCH

