

# U.S. PUBLIC LAND SURVEY MONUMENT RECORD

Section 20, Town 7 North Range 3 West, Town of Marion, Grant County, Wisconsin

## CERTIFICATE

I, Larry L. Austin, do hereby certify that the corner location on this record was determined by me and/or under my direct supervision and that this U.S. public land survey monument record is correct and complete to the best of my knowledge and belief.

*Larry L. Austin*  
Larry L. Austin, S-1903



● = CORNER LOCATION

## HISTORY OF CORNER

Corner was originally set in 1833 by Harvey Parke. No other record of the corner was found.

## CORNER EVIDENCE FOUND

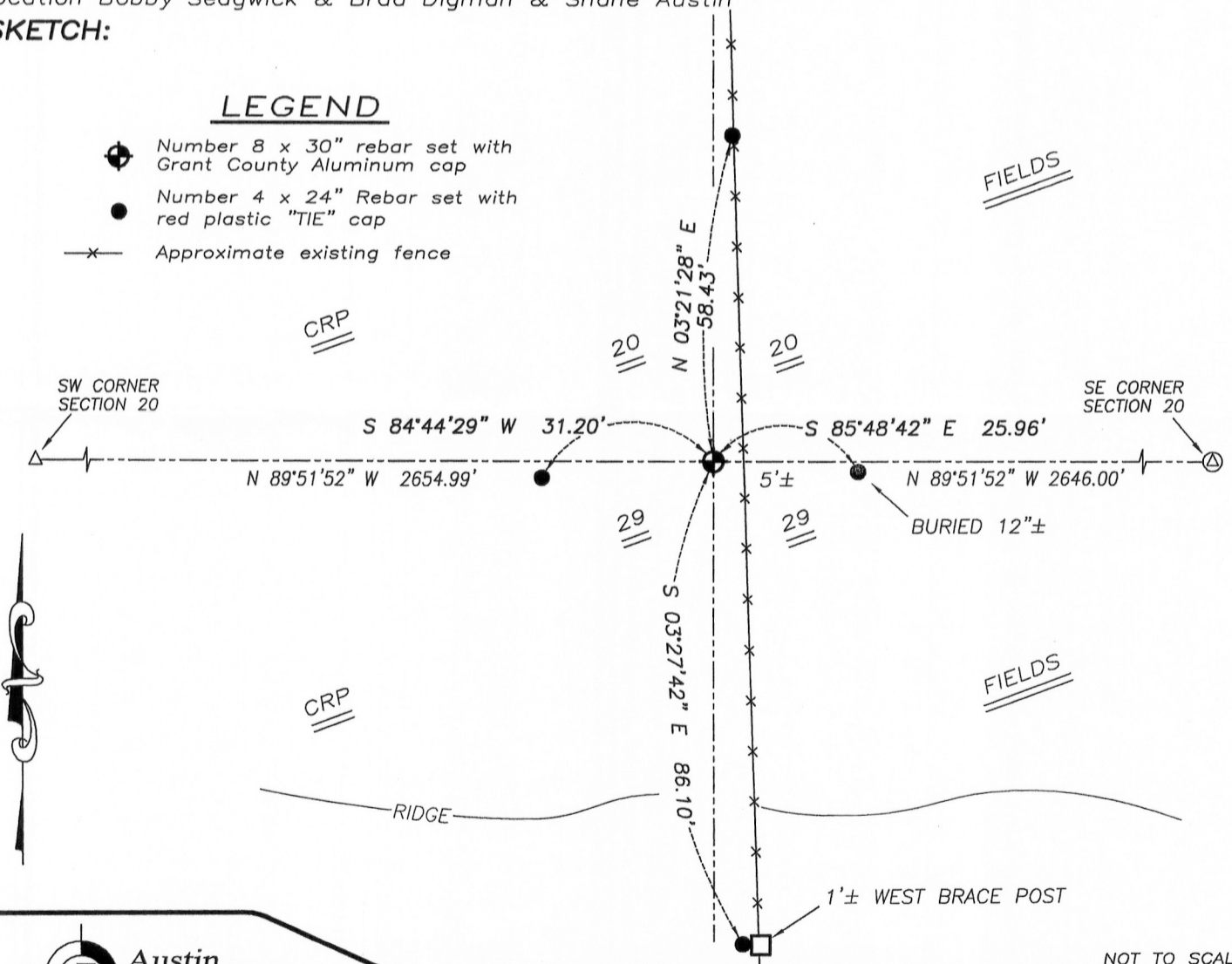
I reset the corner proportionally between the Southwest and Southeast corners of Section 20. I verified this location by E.D.M. and G.P.S. methods.

DESCRIPTION OF CORNER AND WITNESS MONUMENTS, references and accessories used to perpetuate the original or re-established location of this corner. Witnesses to monument location Bobby Sedgwick & Brad Digman & Shane Austin

## SKETCH:

### LEGEND

- Number 8 x 30" rebar set with Grant County Aluminum cap
- Number 4 x 24" Rebar set with red plastic "TIE" cap
- x— Approximate existing fence



NOT TO SCALE



**Austin Engineering LLC**  
austinengineeringllc.com

4211 HWY 81 E, LANCASTER, WI 53813  
PHONE: 608-723-6363 FAX: 608-723-6702

JOB NUMBER: 09S181-PEER  
FIELD BOOK: T7NR3W  
G:\T7NR3W\19  
H:\TIE\T7NR3W\90

DRAWN BY: SW AUSTIN  
APPROVED: LL AUSTIN

90

NOV 04 2011