

# GRANT COUNTY CERTIFIED LAND CORNER

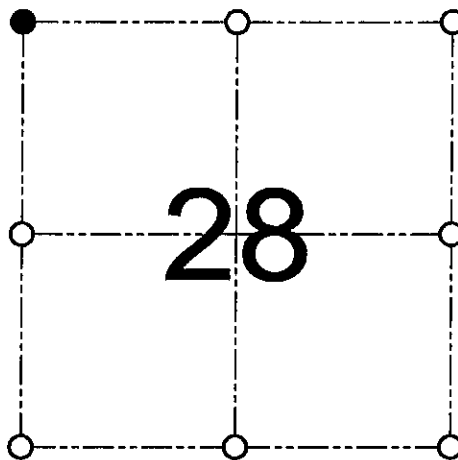
CORNER NUMBER 89

**CERTIFICATE:**

I, Larry L. Austin, do hereby certify that on the 26th day of July, 2000, I found no evidence of the Northwest corner of Section 28, Town 7 North, Range 3 West, of the 4th Principal Meridian, and I re-established said corner according to the Wisconsin statutes as shown and described hereon.

Dated this 3rd day of November, 2000

*Larry L. Austin*  
Larry L. Austin S-1903



● = CORNER LOCATION  
NORTHWEST CORNER OF SECTION 28, T 7 N R 3 W TOWN OF MARION

**HISTORY OF ORIGINAL CORNER ESTABLISHMENT:**

Corner was originally set in 1833 by Harvey Parke.  
No other record of the corner was found.

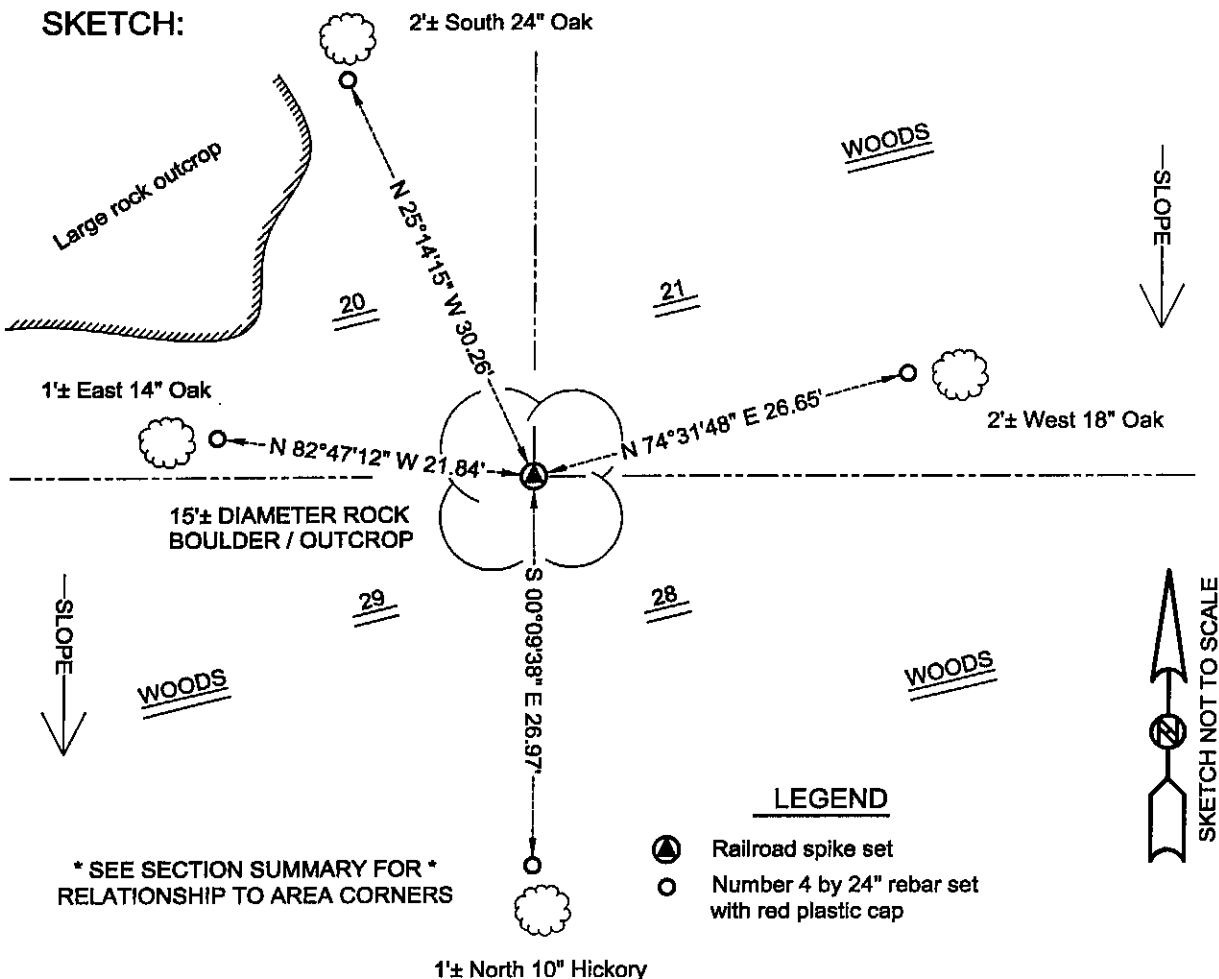
**DESCRIPTION OF CORNER EVIDENCE FOUND:**

I reset the corner based on proportionate methods.  
Verified this location using EDM & GPS methods.

**DESCRIPTION OF CORNER AND WITNESS MONUMENTS, references and accessories used to perpetuate the original or re-established location of this corner**

WITNESS TO THE CORNER LOCATION: SHANE AUSTIN & JERRY SPEILMAN

**SKETCH:**



**LEGEND**

- Railroad spike set
- Number 4 by 24" rebar set with red plastic cap

\* SEE SECTION SUMMARY FOR \*  
RELATIONSHIP TO AREA CORNERS