

U.S. PUBLIC LAND SURVEY MONUMENT RECORD - GRANT COUNTY, WI

Section 27, Town 7 North Range 3 West, Town of Marion (a)

NOTE: This form is intended and designed to fulfill all requirements of the Wisconsin Administrative Code Chapter A-E 7.08, U.S. Public Land Survey Monument Record (3) (a) (b) (c) (d) (e) (f) (g) (h) (i).

CERTIFICATE: (i)

I, Aaron J. Austin, Wisconsin Professional Land Surveyor, do hereby certify that the corner location on this record was determined by me and/or under my direct supervision and that this U.S. Public Land Survey Monument Record is correct and complete to the best of my knowledge and belief.

Dated this 19th day of June, 2024.

Aaron J. Austin, S-2922



⊕ = CORNER LOCATION

Grant County Coordinates: NAD 83 (2011) Northing: 601,347.20 Easting: 817,634.98

HISTORY OF CORNER ESTABLISHMENT:

Original corner was set in 1833 by Harvey Parke. Matthew Janiak set a 3/4" Rebar and prepared a Survey Monument Record dated 10-3-1990.

DESCRIPTION OF CORNER EVIDENCE FOUND: (b) (f) (g) (h)

I found the 3/4" Rebar Janiak set. I found one and set three additional witness corners after I verified the Monument's location with G.P.S. and E.D.M. methods.

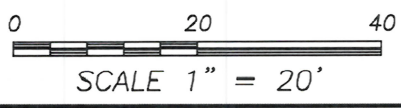
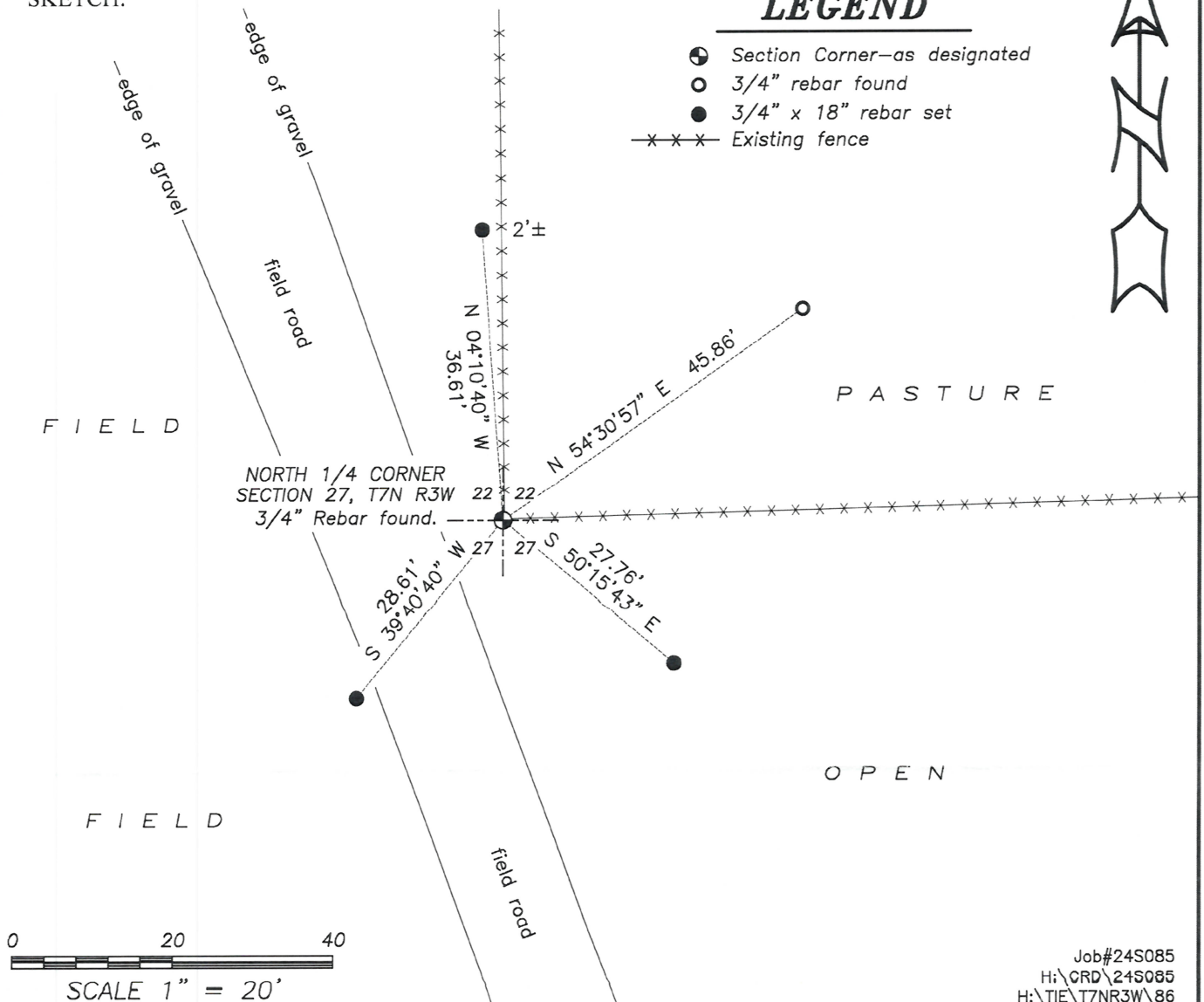
DESCRIPTION OF CORNER AND WITNESS MONUMENTS, references and accessories used to perpetuate the original or re-established location of this corner. (c) (d) (e)

Witnesses to corner location Shane Austin, Owen Austin, Tanner Austin. Drawn by: Owen Austin.

SKETCH:

LEGEND

- ⊕ Section Corner—as designated
○ 3/4" rebar found
● 3/4" x 18" rebar set
-x-x-x Existing fence



OCT 26 1990

GRANT COUNTY GOVERNMENT CORNER RECORD

S 1/4 CORNER, SECTION 22, TOWNSHIP 7 NORTH, RANGE 3 ~~WEST~~ - WEST,
TOWN, ~~CITY OR VILLAGE OF~~ MARION

TYPE OF MONUMENT: 3/4" X 24" IRON ROD ELEVATION - M.S.L. DATUM _____

STATE PLANE COORDINATES: N _____

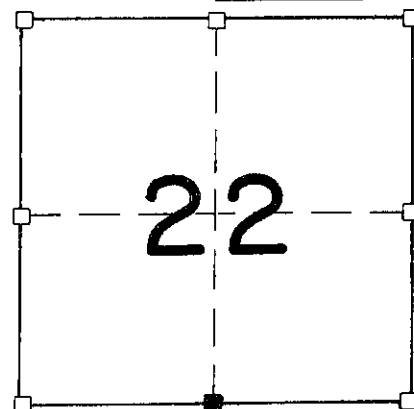
WISCONSIN SOUTH ZONE E _____

WITNESSES TO CORNER LOCATION

SEAN M. WALSH

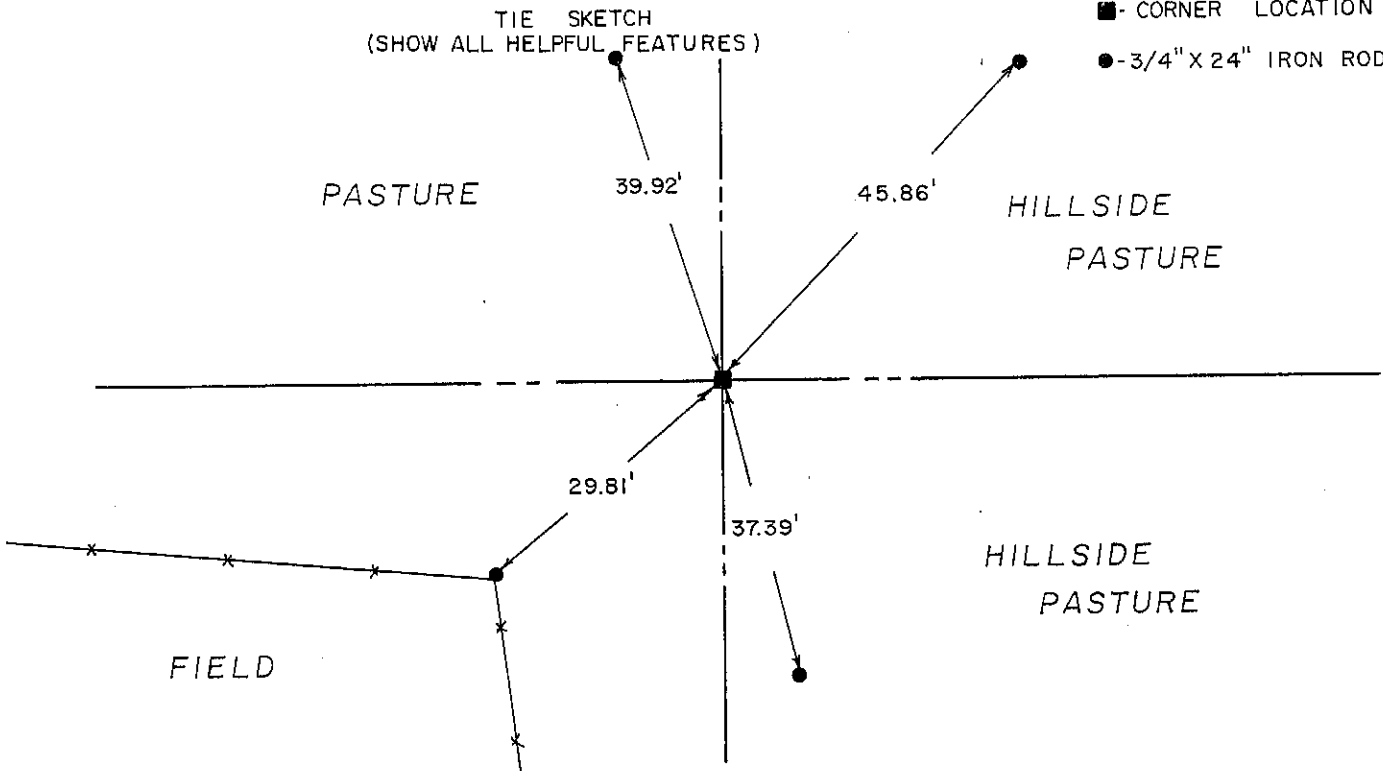
PATRICK J. DEDERICH

SECTION 22, T 7 N, R 3 W
TOWN OF MARION



NORTH

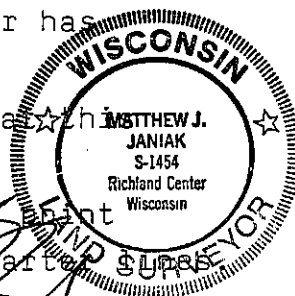
TIE SKETCH
(SHOW ALL HELPFUL FEATURES)



SURVEYOR'S CERTIFICATE
STATE OF WISCONSIN)
RICHLAND COUNTY)SS

SEAL S - 1454

I, Matthew J. Janiak, DO HEREBY CERTIFY THAT the above corner has
been established under my direction and supervision in
accordance with the information contained hereon and that
information is correct to the best of my information,
knowledge and belief. This corner is established at the point
of intersection of the North/South and the East/West quarter



DATED THIS 3rd DAY OF October, 19 90

REGISTERED LAND SURVEYOR

P. 86