

GRANT COUNTY CERTIFIED LAND CORNER

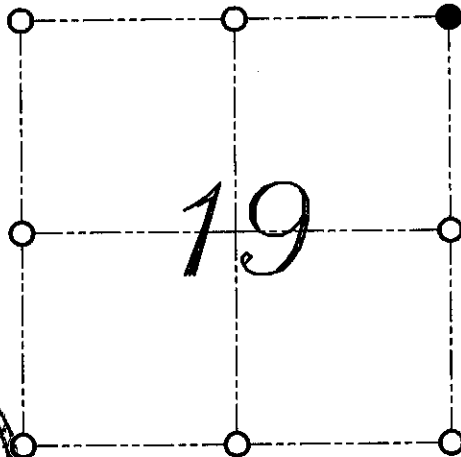
CORNER NUMBER 71

CERTIFICATE:

I, LARRY L. AUSTIN, DO HEREBY CERTIFY THAT ON 17th DAY OF NOVEMBER, 1999, I FOUND NO EVIDENCE OF THE NORTHEAST CORNER OF SECTION 19, TOWN 7 NORTH, RANGE 3 WEST, OF THE FOURTH PRINCIPAL MERIDIAN, AND I RE-ESTABLISHED SAID CORNER ACCORDING TO THE WISCONSIN STATUTES AS SHOWN AND DESCRIBED HEREON.

DATED THIS 6th DAY OF DECEMBER, 1999

Larry L. Austin
LARRY L. AUSTIN S-1903



● = CORNER LOCATION

NORTHEAST CORNER OF SECTION 19, T 7 N R 3 W TOWN OF MARION



HISTORY OF ORIGINAL CORNER ESTABLISHMENT:

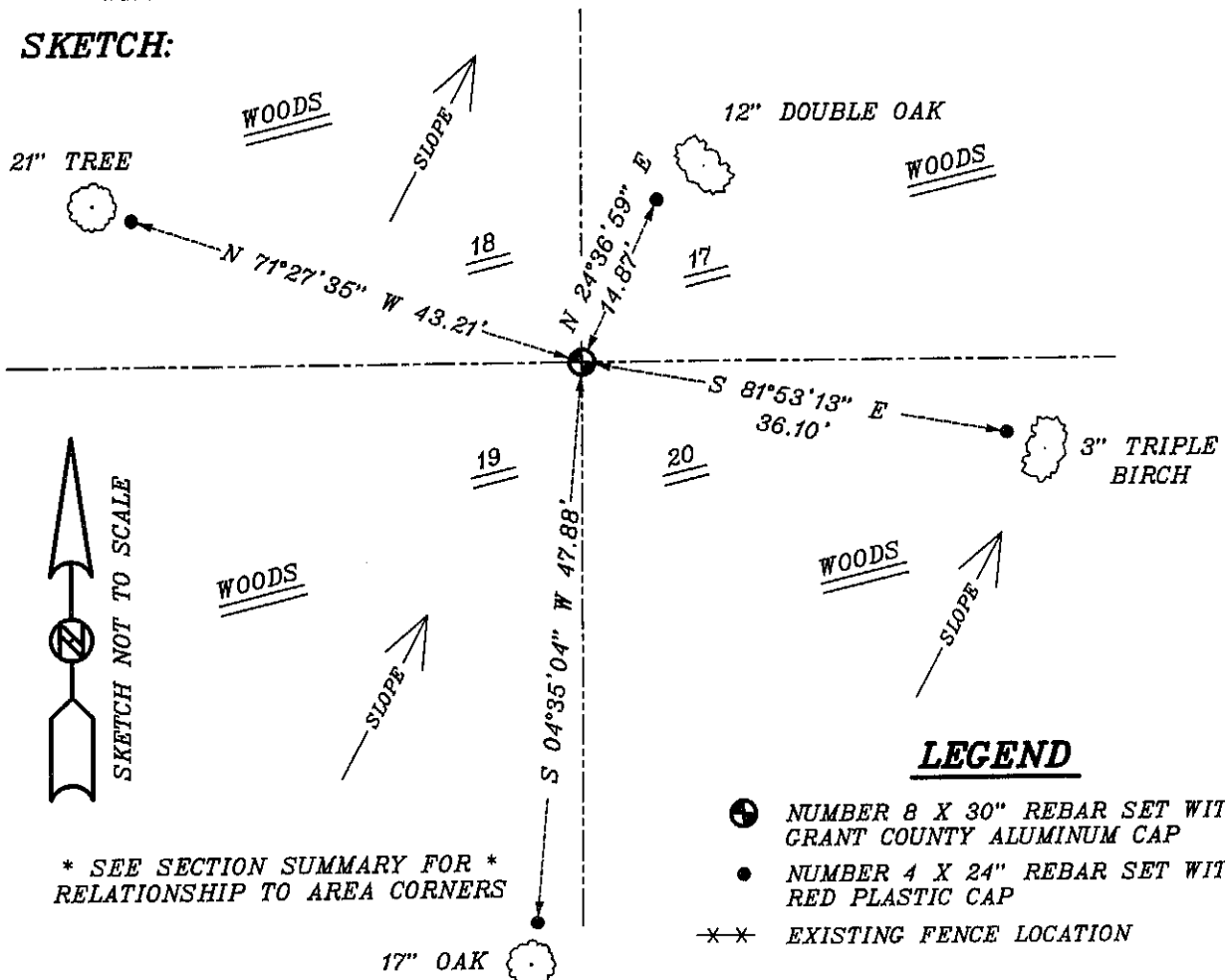
CORNER WAS ORIGINALLY SET IN 1833 BY HARVEY PARKE.
NO OTHER RECORD OF THE CORNER WAS FOUND.

DESCRIPTION OF CORNER EVIDENCE FOUND:

I FOUND NO EVIDENCE OF THE LOCATION OF THE CORNER. I RESET THE CORNER BY PROPORTIONING FOUR WAYS OF THE CORNER. VERIFIED THIS LOCATION USING E.D.M. AND G.P.S. METHODS.

DESCRIPTION OF CORNER AND WITNESS MONUMENTS, REFERENCES AND ACCESSORIES USED TO PERPETUATE THE ORIGINAL OR RE-ESTABLISHED LOCATION OF THIS CORNER:
WITNESS TO THE CORNER LOCATION: SHANE AUSTIN ; SHELBY BLINDERT

SKETCH:



LEGEND

- NUMBER 8 X 30" REBAR SET WITH GRANT COUNTY ALUMINUM CAP
- NUMBER 4 X 24" REBAR SET WITH RED PLASTIC CAP
- *—*— EXISTING FENCE LOCATION

* SEE SECTION SUMMARY FOR *
RELATIONSHIP TO AREA CORNERS