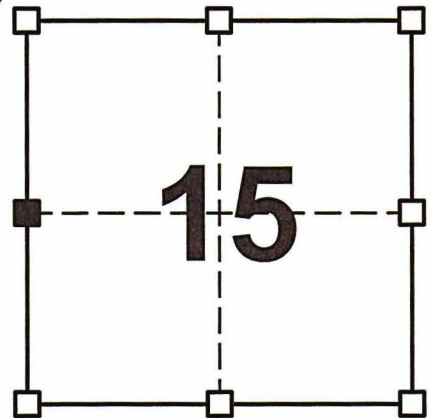


GRANT COUNTY CERTIFIED U.S. PUBLIC LAND SURVEY MONUMENT RECORD

DATUM: NAD 83 (2011)	GRANT COUNTY COORDINATES	
CONTROL: COMBINATION OF GPS AND CONVENTIONAL FIELD CONTROL	NORTH	609,307.72'
	EAST	814,789.83'

WEST QUARTER CORNER OF SECTION 15, TOWN 7 NORTH, RANGE 3 WEST, TOWN OF MARION, GRANT COUNTY, WISCONSIN.



SECTION 15
TOWN 7 NORTH
RANGE 3 WEST

(A) IDENTIFY THE CORNER BY REFERENCE TO THE U.S. PUBLIC LAND SURVEY SYSTEM

■ = CORNER MONUMENT RESTORED

WITNESS TO CORNER LOCATION:

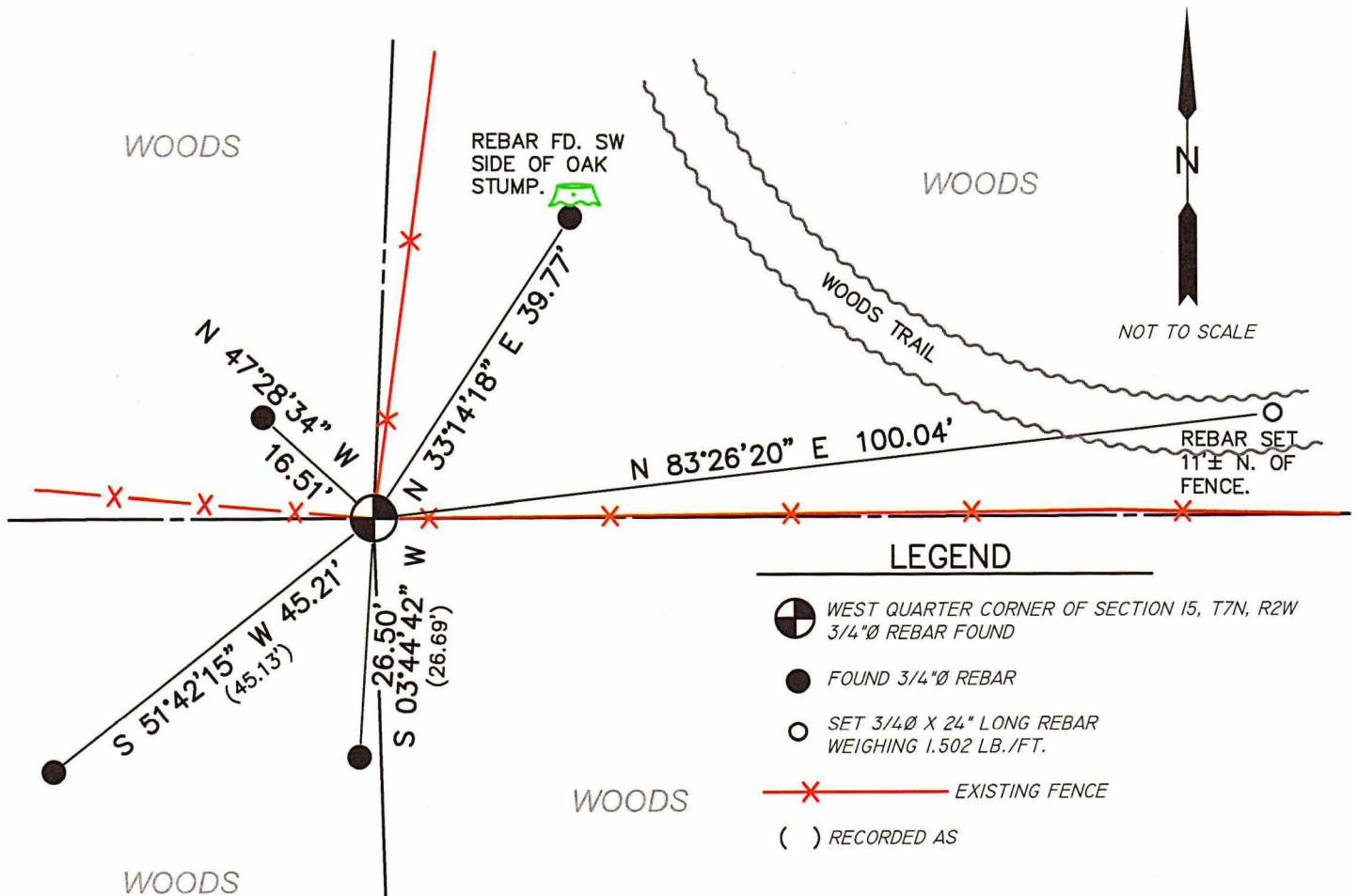
TODD T. RUMMLER

GAIGE D. DILLEY

(B) DESCRIBE ANY RECORD EVIDENCE, MONUMENT EVIDENCE, OCCUPATIONAL EVIDENCE, TESTIMONIAL EVIDENCE OR ANY OTHER MATERIAL EVIDENCE YOU CONSIDERED, AND WHETHER THE MONUMENT WAS FOUND OR PLACED.

I FOUND THE 3/4" DIAMETER REBAR ON THE SOUTH SIDE OF A WOOD FENCE CORNER POST AS NOTED ON THE TIE SHEET DATED OCTOBER 3, 1990 BY MATTHEW JANIAC, S-1454. I FOUND THREE OF THE PREVIOUS REFERENCE TIES SET BY MR. JANIAC, BUT THE 8" WHITE WITH THE SPIKE TO THE SOUTHEAST OF THE CORNER HAS DIED AND HAS FALLEN OVER. I ALSO FOUND A REBAR TO THE NORTHWEST OF THE CORNER THAT CAN SERVE AS A REFERENCE TIE BUT WAS NOT PREVIOUSLY DOCUMENTED. I ACCEPTED THE REBAR AT THE FENCE CORNER AS THE CORNER AND MEASURED TO THE FOUND REBAR TIES AS SHOWN BELOW TO PERPETUATE THE CORNER LOCATION.

(C & D) IN THE PLAN VIEW DRAWING BELOW, PROVIDE REFERENCE TIES TO AT LEAST 4 WITNESS MONUMENTS. (WITNESS MONUMENTS SHALL BE CONCRETE, NATURAL STONE, IRON OR OTHER EQUALLY DURABLE MATERIAL.) DESCRIBE WITNESS MONUMENTS.



(E) DESCRIBE ANY MATERIAL DISCREPANCY BETWEEN THE LOCATION OF THE CORNER AS RESTORED OR REESTABLISHED AND THE LOCATION OF THAT CORNER AS PREVIOUSLY RESTORED OR REESTABLISHED BY DISTANCE AND DIRECTION. SHOW THE DISCREPANCY ON THE PLAN VIEW DRAWING UNDER (C), ABOVE. SHOW THE DISTANCES BETWEEN THE CORNER AS PREVIOUSLY RESTORED OR REESTABLISHED AND (1) THE CORNER AS RESTORED OR REESTABLISHED, AND (2) TO AT LEAST 2 OF THE WITNESS MONUMENTS AS SHOWN ON THE DRAWING IN (C), ABOVE.

NONE

(F) WAS THE CORNER RESTORED THROUGH ACCEPTANCE OF (1) AN OBLITERATED EVIDENCE LOCATION, OR (2) A FOUND PERPETUATED LOCATION?

2.) A FOUND PERPETUATED LOCATION

(G & H) WAS THE CORNER REESTABLISHED THROUGH LOST CORNER PROPORTIONATE METHODS? IF SO SHOW THE METHOD, INCLUDING THE DIRECTION AND DISTANCED TO OTHER PUBLIC LAND SURVEY CORNERS USED AS EVIDENCE OR USED FOR PROPORTIONING IN DETERMINING THE CORNER LOCATION.

NO.

AFFIX LAND SURVEYOR SEAL

(I) I, TODD T. RUMMLER, PLS-2443 CERTIFY THAT THE CORNER LOCATION SHOWN ON THIS RECORD WAS DETERMINED BY ME OR UNDER MY DIRECTION AND CONTROL AND THAT THIS U.S. PUBLIC LAND SURVEY MONUMENT RECORD IS CORRECT AND COMPLETE TO THE BEST OF MY KNOWLEDGE AND BELIEF.

[Handwritten Signature] 7/9/2013
SIGNATURE DATE



OCT 26 1990

GRANT COUNTY GOVERNMENT CORNER RECORD

W 1/4 CORNER, SECTION 15, TOWNSHIP 7 NORTH, RANGE 3 ~~EAST~~ - WEST,
TOWN, CITY OR VILLAGE OF MARION

TYPE OF MONUMENT: 3/4" X 24" IRON ROD ELEVATION - M.S.L. DATUM

STATE PLANE COORDINATES: N

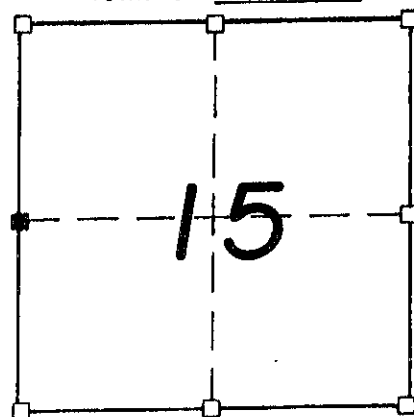
WISCONSIN SOUTH ZONE E

WITNESSES TO CORNER LOCATION

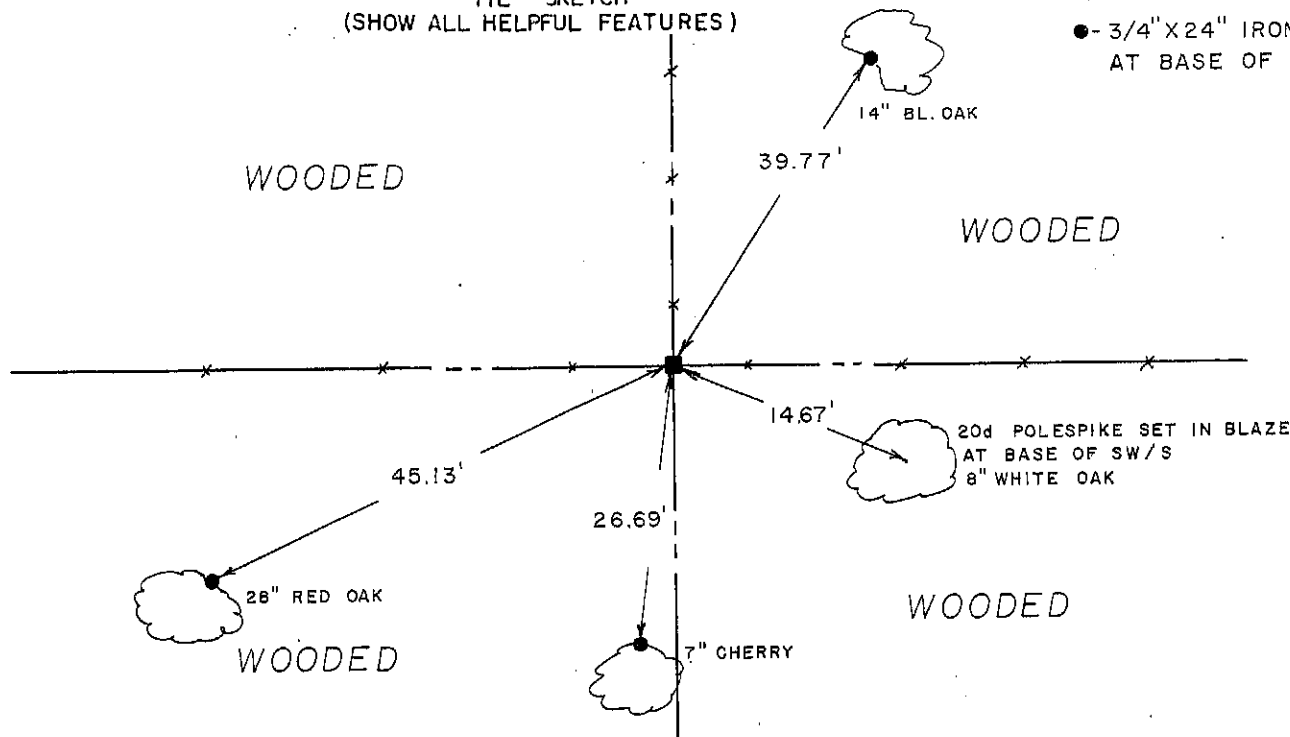
SEAN M. WALSH

PATRICK J. DEDERICH

SECTION 15, T 7 N, R 3 W
TOWN OF MARION



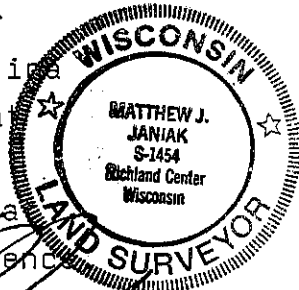
TIE SKETCH
(SHOW ALL HELPFUL FEATURES)



SURVEYOR'S CERTIFICATE
STATE OF WISCONSIN)
RICHLAND COUNTY)SS

SEAL S- 1454

I, Matthew J. Janiak, DO HEREBY CERTIFY THAT the above corner
has been established under my direction and supervision in
accordance with the information contained hereon and that
this information is correct and true to the best of my
information, knowledge and belief. This corner was set at
the occupied location as it was the best available evidence



DATED THIS 3rd DAY OF October, 19 90

REGISTERED LAND SURVEYOR

1057