

# GRANT COUNTY CERTIFIED LAND CORNER

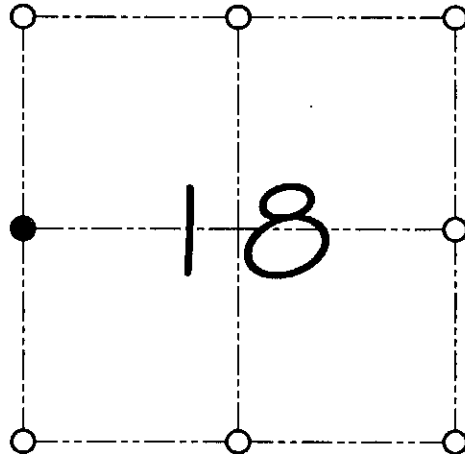
CORNER NUMBER 54

**CERTIFICATE:**

I, Larry L. Austin, do hereby certify that on the 11th day of April, 2000, I found no evidence of the West 1/4 corner of Section 18, Town 7 North, Range 3 West, of the 4th Principal Meridian, and I re-established said corner according to the Wisconsin statutes as shown and described hereon.

Dated this 21st day of April, 2000

*Larry L. Austin*  
Larry L. Austin S-1903



● = CORNER LOCATION

WEST 1/4 CORNER OF  
SECTION 18, T 7 N R 3 W  
TOWN OF HICKORY GROVE

**HISTORY OF ORIGINAL CORNER ESTABLISHMENT:**

Corner was never originally set.  
No other record of the corner was found.

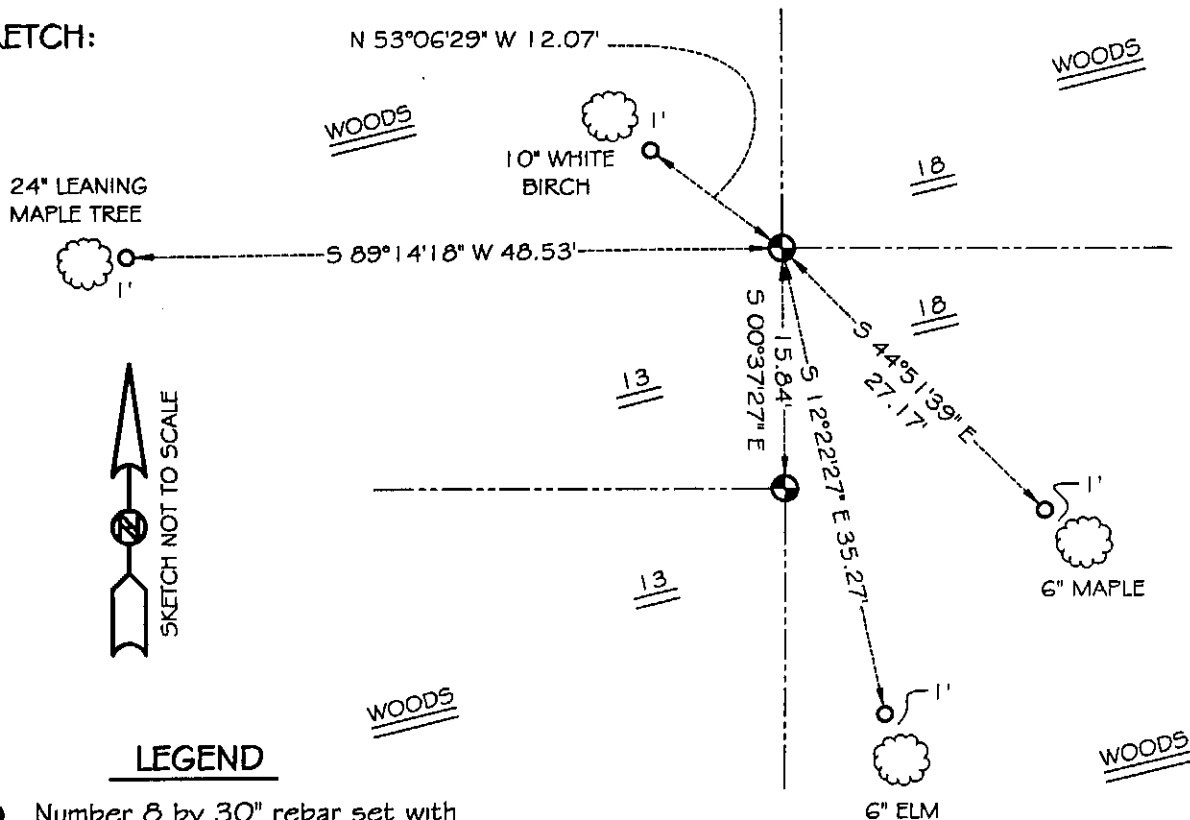
**DESCRIPTION OF CORNER EVIDENCE FOUND:**

I set the corner at the proportioned offset from the East 1/4 of Section 13, T7N R4W. Verified it's location using E.D.M. & G.P.S. methods.

**DESCRIPTION OF CORNER AND WITNESS MONUMENTS, references and accessories used to perpetuate the original or re-established location of this corner**

WITNESS TO THE CORNER LOCATION: SHANE AUSTIN & BOBBY SEDGWICK

**SKETCH:**



**LEGEND**

- Number 8 by 30" rebar set with Grant County aluminum cap
- Number 4 by 24" rebar set with red plastic cap

\* SEE SECTION SUMMARY FOR \*  
RELATIONSHIP TO AREA CORNERS