

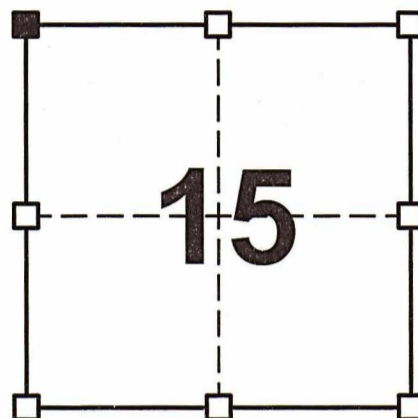
# GRANT COUNTY CERTIFIED U.S. PUBLIC LAND SURVEY MONUMENT RECORD

DATUM: NAD 83 (2011)	GRANT COUNTY COORDINATES	
CONTROL: COMBINATION OF GPS AND CONVENTIONAL FIELD CONTROL	NORTH	611,970.41'
	EAST	814,905.19'

NORTHWEST CORNER OF SECTION 15, TOWN 7 NORTH, RANGE 3 WEST, TOWN OF MARION, GRANT COUNTY, WISCONSIN.

(A) IDENTIFY THE CORNER BY REFERENCE TO THE U.S. PUBLIC LAND SURVEY SYSTEM

■ = CORNER MONUMENT RESTORED



SECTION 15  
TOWN 7 NORTH  
RANGE 3 WEST

WITNESS TO CORNER LOCATION:

TODD T. RUMMLER

GAIGE D. DILLEY

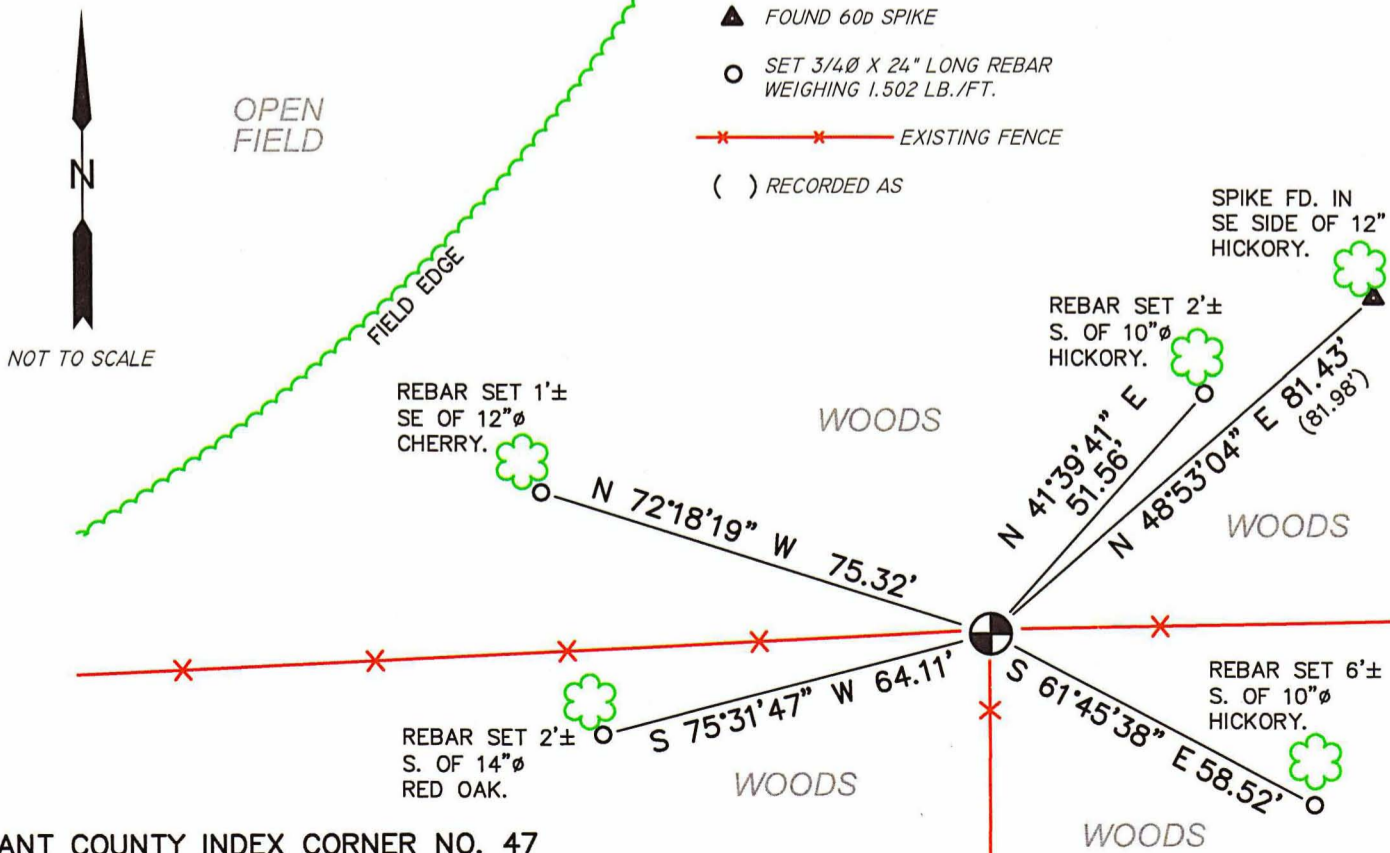
(B) DESCRIBE ANY RECORD EVIDENCE, MONUMENT EVIDENCE, OCCUPATIONAL EVIDENCE, TESTIMONIAL EVIDENCE OR ANY OTHER MATERIAL EVIDENCE YOU CONSIDERED, AND WHETHER THE MONUMENT WAS FOUND OR PLACED.

I FOUND THE 3/4" DIAMETER REBAR WITH GRANT COUNTY ALUMINUM CAP AS NOTED ON THE TIE SHEET DATED APRIL 30, 1997 BY SEAN WALSH, S-2016. SEVERAL OF THE SPIKES IN TREES REFERENCE TIES SET BY MR. WALSH ARE NOW OVERGROWN. I ACCEPTED THE CAPPED REBAR AS THE CORNER AND ESTABLISHED NEW REFERENCE TIES AS SHOWN BELOW TO PERPETUATE THE CORNER LOCATION.

(C & D) IN THE PLAN VIEW DRAWING BELOW, PROVIDE REFERENCE TIES TO AT LEAST 4 WITNESS MONUMENTS.(WITNESS MONUMENTS SHALL BE CONCRETE, NATURAL STONE, IRON OR OTHER EQUALLY DURABLE MATERIAL.) DESCRIBE WITNESS MONUMENTS.

### LEGEND

- NORTHWEST CORNER OF SECTION 15, T7N, R2W  
3/4"Ø REBAR WITH GRANT COUNTY ALUMINUM CAP FOUND
- FOUND 60d SPIKE
- SET 3/4"Ø X 24" LONG REBAR WEIGHING 1.502 LB./FT.
- EXISTING FENCE
- ( ) RECORDED AS



(E) DESCRIBE ANY MATERIAL DISCREPANCY BETWEEN THE LOCATION OF THE CORNER AS RESTORED OR REESTABLISHED AND THE LOCATION OF THAT CORNER AS PREVIOUSLY RESTORED OR REESTABLISHED BY DISTANCE AND DIRECTION. SHOW THE DISCREPANCY ON THE PLAN VIEW DRAWING UNDER (C), ABOVE. SHOW THE DISTANCES BETWEEN THE CORNER AS PREVIOUSLY RESTORED OR REESTABLISHED AND (1) THE CORNER AS RESTORED OR REESTABLISHED, AND (2) TO AT LEAST 2 OF THE WITNESS MONUMENTS AS SHOWN ON THE DRAWING IN (C), ABOVE.

NONE

(F) WAS THE CORNER RESTORED THROUGH ACCEPTANCE OF (1) AN OBLITERATED EVIDENCE LOCATION, OR (2) A FOUND PERPETUATED LOCATION?

2.) A FOUND PERPETUATED LOCATION

(G & H) WAS THE CORNER REESTABLISHED THROUGH LOST CORNER PROPORTIONATE METHODS? IF SO SHOW THE METHOD, INCLUDING THE DIRECTION AND DISTANCED TO OTHER PUBLIC LAND SURVEY CORNERS USED AS EVIDENCE OR USED FOR PROPORTIONING IN DETERMINING THE CORNER LOCATION.

NO.

AFFIX LAND SURVEYOR SEAL

(I) I, TODD T. RUMMLER, PLS-2443 CERTIFY THAT THE CORNER LOCATION SHOWN ON THIS RECORD WAS DETERMINED BY ME OR UNDER MY DIRECTION AND CONTROL AND THAT THIS U.S. PUBLIC LAND SURVEY MONUMENT RECORD IS CORRECT AND COMPLETE TO THE BEST OF MY KNOWLEDGE AND BELIEF.

Todd T. Rummeler 2/9/2023  
SIGNATURE DATE



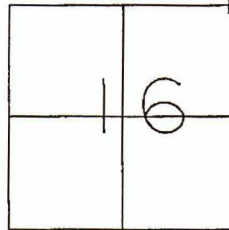
REC'D JUN 4 1997

# GRANT COUNTY U.S. PUBLIC LAND SURVEY MONUMENT RECORD

**TYPE OF MONUMENT:** Aluminum Capped Iron Rod  
**TIES ARE AS INDICATED ON SKETCH**

**WITNESSES TO CORNER LOCATION**

Sean M. Walsh  
Christopher G. Reedy



CORNER LOCATION

Northeast Corner  
Section 16  
Town 7 North, Range 3 West  
Marion Township

### BASIS FOR MONUMENT LOCATION

I located an aluminum capped iron rod at this location and accepted it as the best available evidence and monumented and perpetuated it as shown hereon.

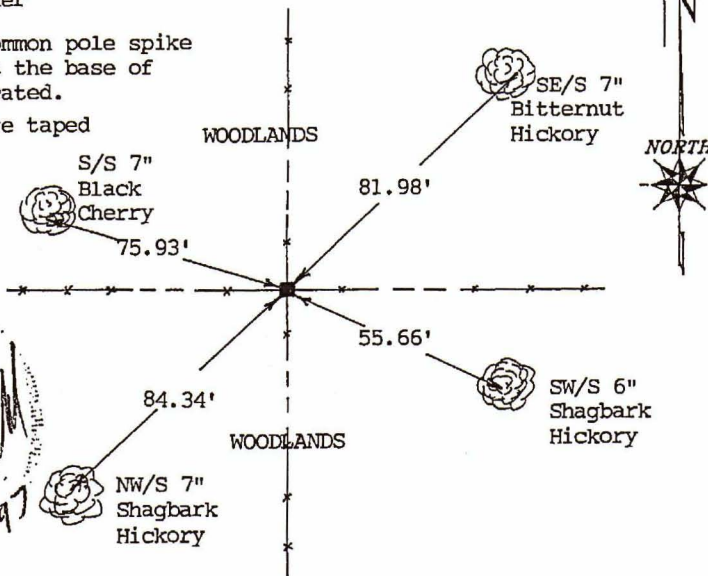
I, do hereby certify that this information is correct and true to the best of my information, knowledge and belief.

■ - Aluminum Capped Iron Rod  
Found at Corner

### TIE SKETCH

Ties are a 60d common pole spike set in a blaze at the base of the tree as indicated.

Tie distances were taped horizontally.



*Sean M. Walsh*  
4-30-97

# U.S. PUBLIC LAND SURVEY MONUMEN. RECORD

FEB 13 1990

CORNER DESCRIPTION: SE CORNER, SECTION 09, T 7 N, R 3 W

STATE PLANE COORDINATES: N \_\_\_\_\_, E \_\_\_\_\_

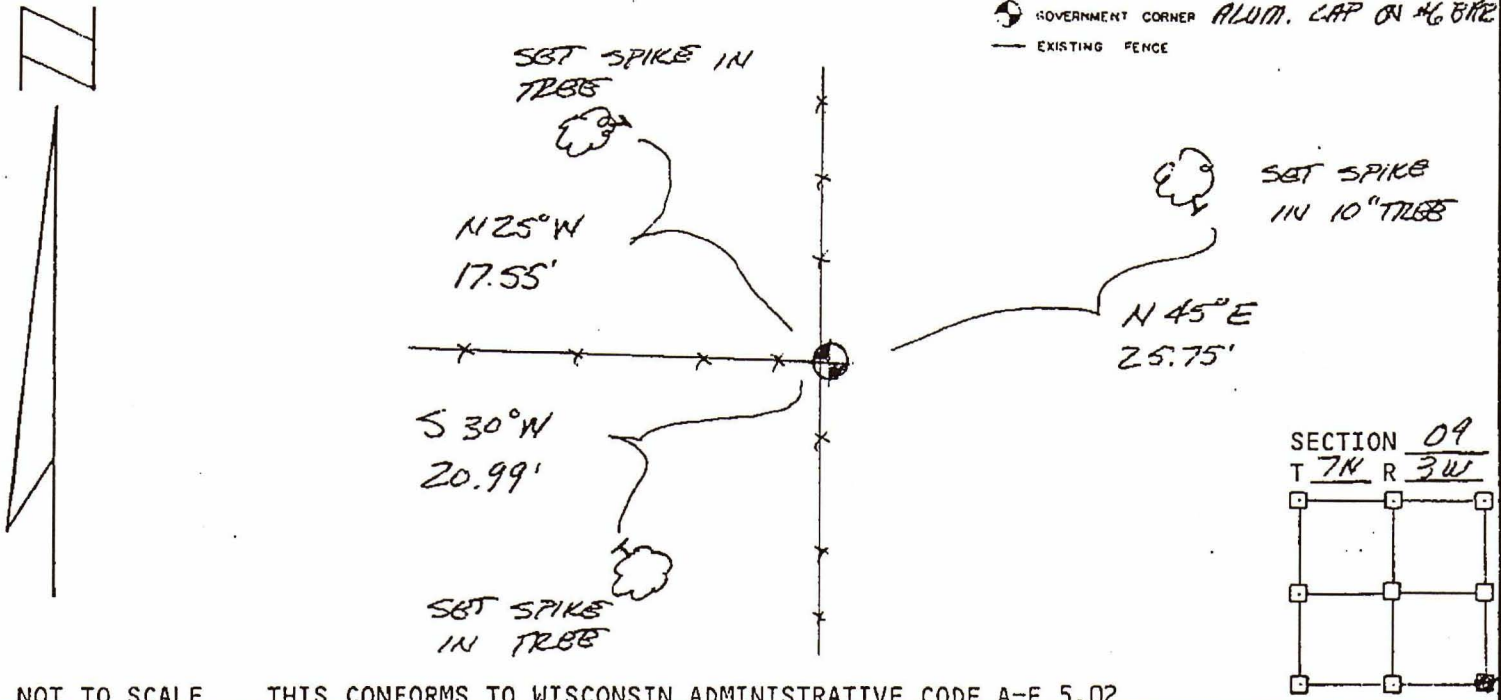
THETA ANGLE: \_\_\_\_\_

HORIZONTAL DATUM: WISCONSIN STATE PLANE COORDINATE SYSTEM, SOUTH ZONE

EVIDENCE: ACCEPTED OCCUPATION AND MEASURED WITH BDM TRAVESSES OF AREA

MONUMENT: FOUND , PLACED   
 METHOD OF RESTORATION(RE-ESTABLISHMENT):  
 ACCEPTED EXISTING MONUMENT  
 N,  E ACCEPTED OCCUPATION  
 N,  E LOST CORNER PROPORTIONATE METHODS  
 DATE CORNER SET: JAN 29, 1990

- LEGEND**
- ▲ SET #6 REBAR, 113 LBS PER LINEAL FT MIN WT
  - SET "X24" IRON PIPE, 113 LBS PER LINEAL FT MIN WT
  - SET 2"X30" IRON PIPE, 365 LBS PER LINEAL FT MIN WT
  - FOUND 1" IRON PIPE
  - FOUND 2" IRON PIPE
  - ⊂ FOUND R/R SPIKE
  - SET R/R SPIKE
  - ⊙ GOVERNMENT CORNER ALUM. CAP ON #6 BAR
  - EXISTING FENCE



NOT TO SCALE THIS CONFORMS TO WISCONSIN ADMINISTRATIVE CODE A-F 5.02

**SURVEYOR'S AFFIDAVIT:**  
 STATE OF WISCONSIN)  
GRANT COUNTY) SS  
 I hereby certify that I, KEITH E. DALRING have complied with the Wisconsin State Statutes, Statutes of the United States, and the rules and regulations made by the Secretary of the Interior in the location of the corner shown above.  
 DATE OF SURVEY: FEB 1 1990  
Keith E. Dalring  
 REGISTERED LAND SURVEYOR  
 # 5-1929

