

73037

U.S. PUBLIC LAND SURVEY MONUMENT RECORD - GRANT COUNTY, WI

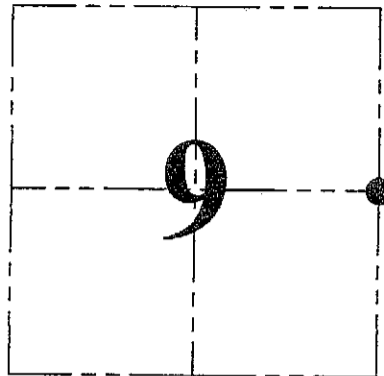
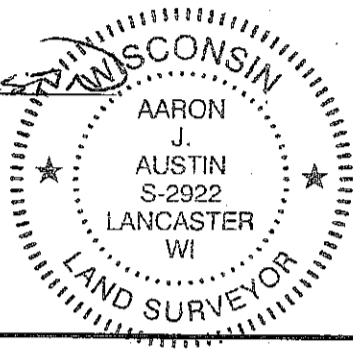
Section 9, Town 7 North Range 3 West, Town of Marion

CERTIFICATE:

I, Aaron J. Austin, do hereby certify that the corner location on this record was determined by me and/or under my direct supervision and that this U.S. Public Land Survey Monument Record is correct and complete to the best of my knowledge and belief.

Dated this 30th day of April, 2014.

Aaron J. Austin
Aaron J. Austin, S-2922



● = CORNER LOCATION

HISTORY OF CORNER ESTABLISHMENT:

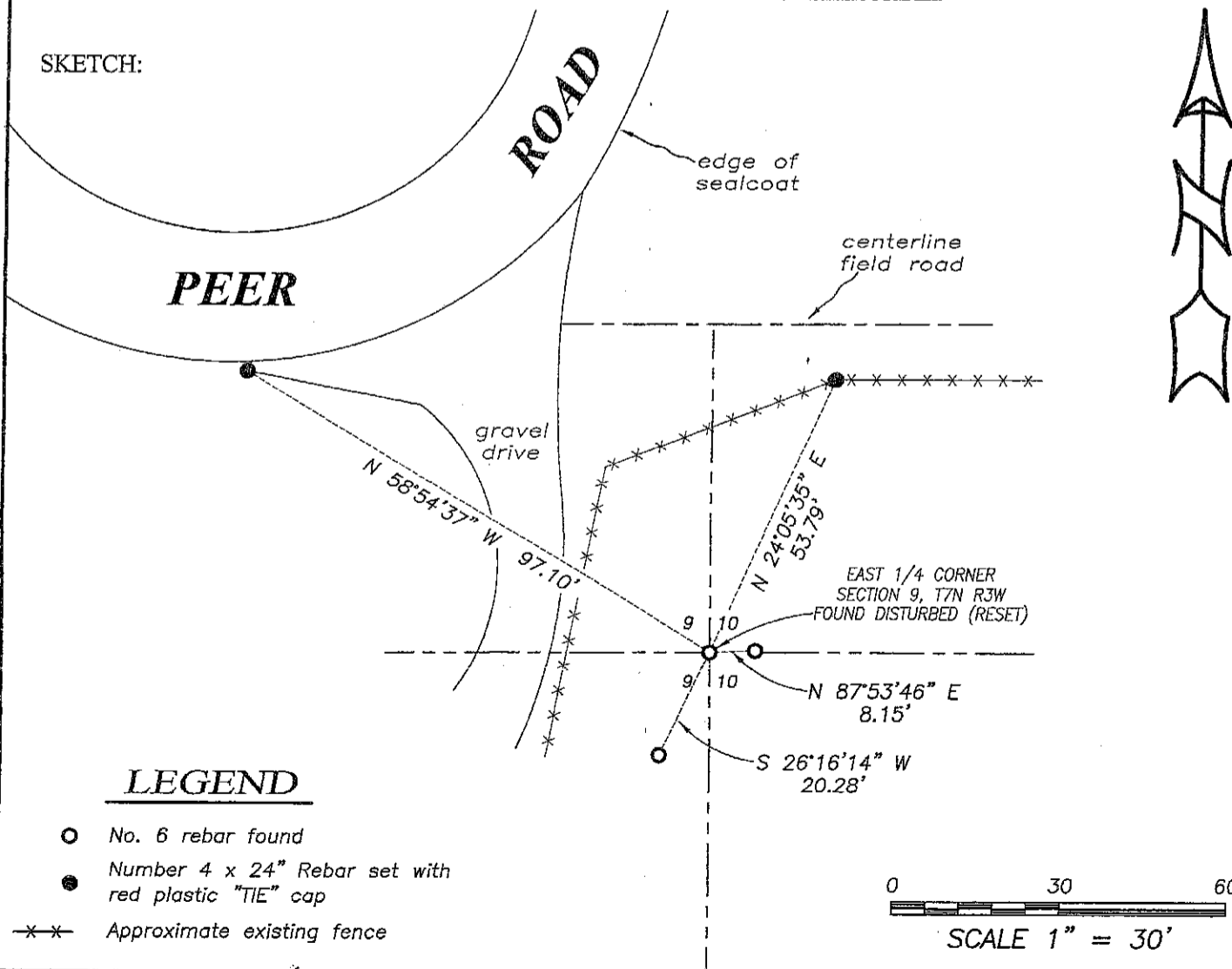
1833 Harvey Parke set original corner.
1990 Keith Dalsing reset the corner and filed a U.S. Public Land Survey Monument Record.
2001 James Baker found the corner and prepared a U.S. Public Land Survey Monument Record.

DESCRIPTION OF CORNER EVIDENCE FOUND:

I found a disturbed No. 6 rebar at the corner location. I reset the corner based upon 2 found ties and set 2 new ties. I verified this location with E.D.M. and G.P.S methods.

DESCRIPTION OF CORNER AND WITNESS MONUMENTS, references and accessories used to perpetuate the original or re-established location of this corner. Witnesses to corner location Shane Austin.

SKETCH:



LEGEND

- No. 6 rebar found
- Number 4 x 24" Rebar set with red plastic "TIE" cap
- x-x- Approximate existing fence

0 30 60
SCALE 1" = 30'



Austin
Engineering LLC
austinengineeringllc.com

4211 HWY 81 E, LANCASTER, WI 53813
PHONE: 608-723-6363 FAX: 608-723-6702

JOB NO: 14s032
G:\14s032
H:\TIE\T7NR3W\37

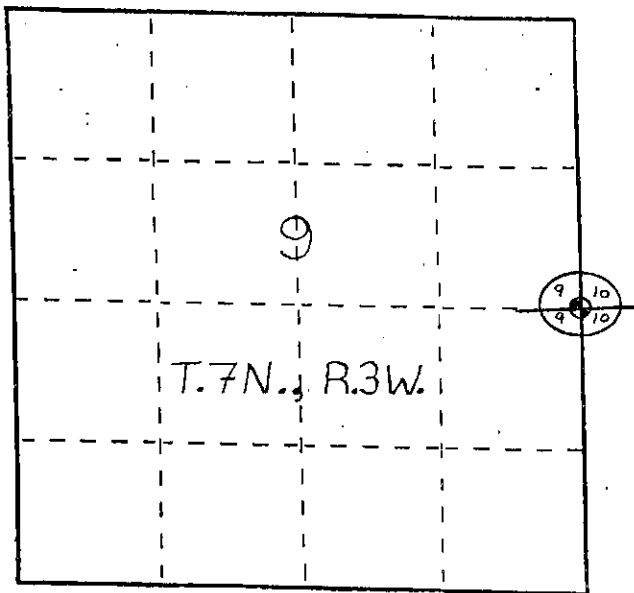
FIELDBOOK: TDSR
DRAWN BY: AJ AUSTIN
CREW: SW AUSTIN

U. S. PUBLIC LAND SURVEY MONUMENT RECORD

INSTRUCTIONS: This record shall show the location of the corner and shall include all of the following nine elements (a through i).

- (a) Identify the corner by reference to the U.S. public land survey system.
- = Corner monument restored.

The East Quarter Corner
 of Section 9, Town 7 North,
 Range 3 West, Marion Township,
 Grant County, Wisconsin.

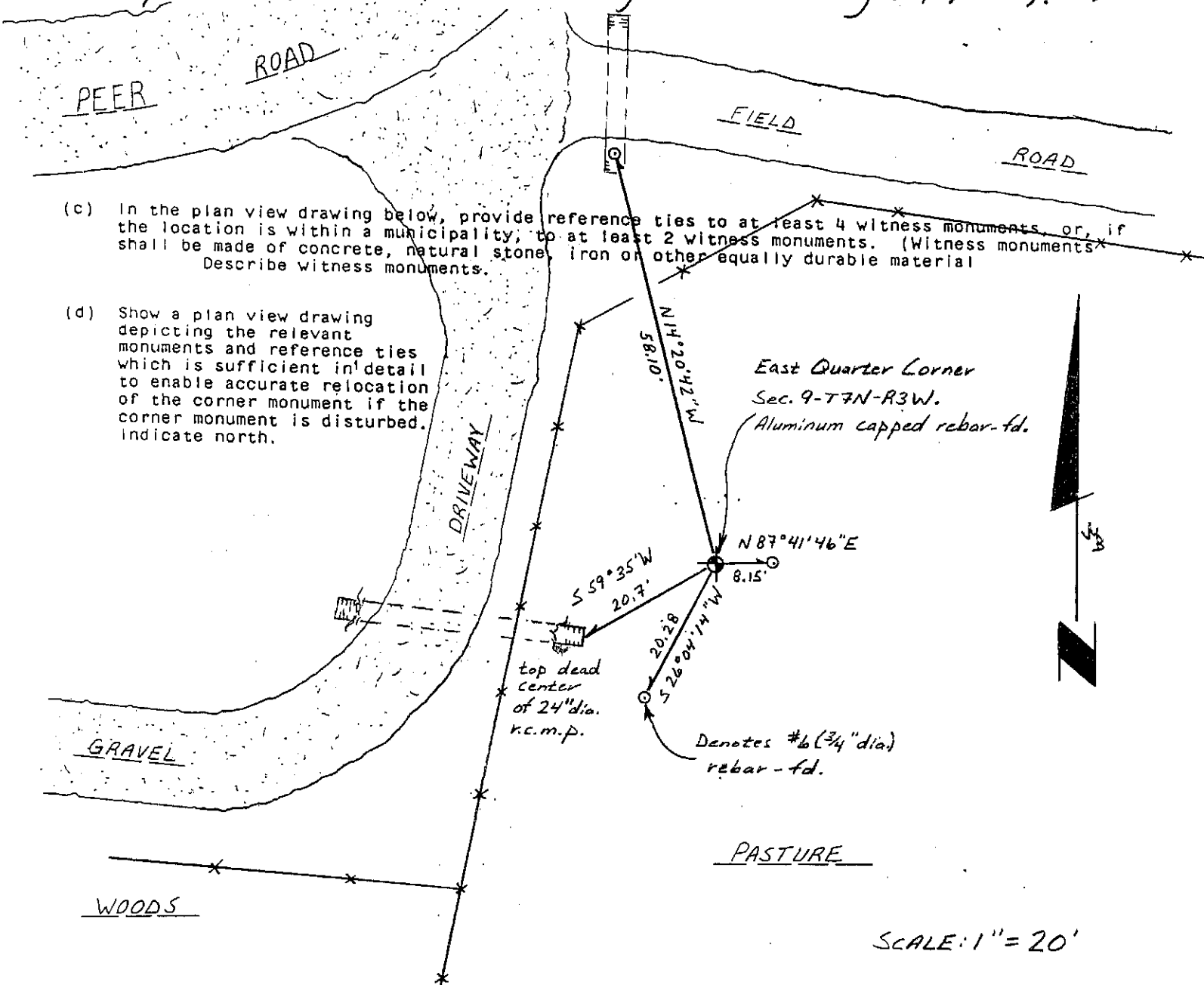


- (b) Describe any record evidence, monument evidence, occupational evidence, testimonial evidence or any other material evidence you considered, and whether the monument was found or placed.

I found and accepted a rebar with a Grant County aluminum cap as noted on a tie sheet by Keith Dalsing (2/1/1990).

- (c) In the plan view drawing below, provide reference ties to at least 4 witness monuments, or, if the location is within a municipality, to at least 2 witness monuments. (Witness monuments shall be made of concrete, natural stone, iron or other equally durable material. Describe witness monuments.)

- (d) Show a plan view drawing depicting the relevant monuments and reference ties which is sufficient in detail to enable accurate relocation of the corner monument if the corner monument is disturbed. Indicate north.



SCALE: 1" = 20'

(e) Describe any material discrepancy between the location of the corner as restored or reestablished and the location of that corner as previously restored or reestablished by distance and direction. Show the discrepancy on the plan view drawing under (d), above. Show the distances between the corner as previously restored or reestablished and (1) the corner as restored or reestablished, and (2) to at least 2 of the witness monuments shown on the drawing in (d), above.

None.

(f) Was the corner restored through acceptance of (1) an obliterated evidence location, or, (2) a found perpetuated location?

A found perpetuated location.

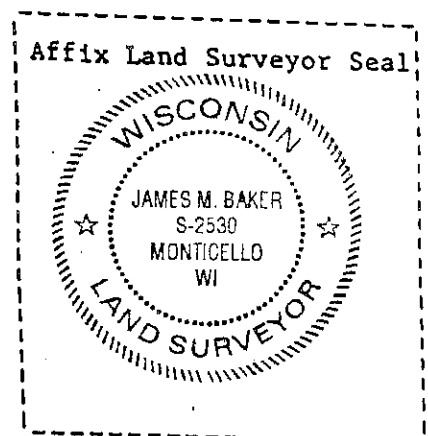
(g&h) Was the corner reestablished through lost corner proportionate methods? If so, show the method, including the directions and distances to other public land survey corners used as evidence or used for proportioning in determining the corner location?

No.

(i) I, James M. Baker
(type or print name) certify that the corner location shown on this record was determined by me or under my direction and control and that this U.S. Public Land Survey Monument Record is correct and complete to the best of my knowledge and belief.

James M. Baker
Signature

9/28/2001
Date



US. PUBLIC LAND SURVEY MONUMENT RECORD

FEB 13 1990

CORNER DESCRIPTION: E 1/4 CORNER, SECTION 09, T 7 N, R 3 W

STATE PLANE COORDINATES: N _____, E _____

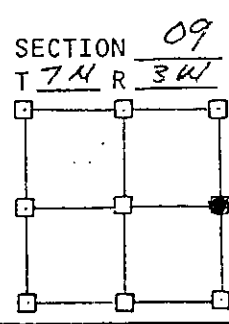
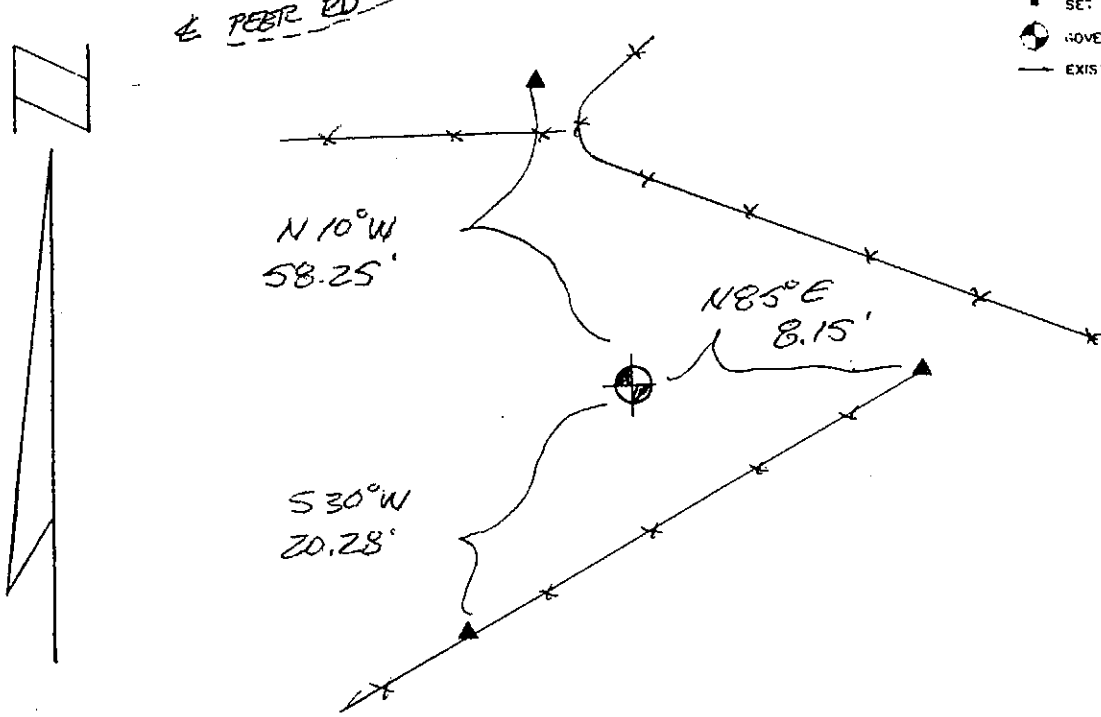
THETA ANGLE: _____

HORIZONTAL DATUM: WISCONSIN STATE PLANE COORDINATE SYSTEM, SOUTH ZONE

EVIDENCE: SET ALUMINUM MONUMENT BY PRIVATE METHOD AND EDM TRAVERSE OF THE AREA

MONUMENT: FOUND , PLACED
 METHOD OF RESTORATION (RE-ESTABLISHMENT):
 ACCEPTED EXISTING MONUMENT
 ACCEPTED OCCUPATION
 LOST CORNER PROPORTIONATE METHODS
 DATE CORNER SET: FEB. 9, 1990

- LEGEND**
- ▲ SET #6 REBAR, 113 LBS PER LINEAL FT MIN. WT
 - SET 1" X 24" IRON PIPE, 113 LBS PER LINEAL FT MIN. WT
 - SET 2" X 30" IRON PIPE, 365 LBS PER LINEAL FT MIN. WT
 - FOUND 1" IRON PIPE
 - FOUND 2" IRON PIPE
 - ⌋ FOUND R/R SPIKE
 - SET R/R SPIKE
 - ⊙ GOVERNMENT CORNER ALUM. CAP ON #6 REBAR
 - EXISTING FENCE

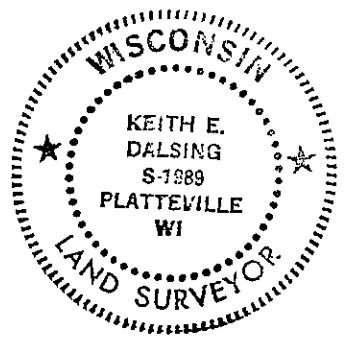


NOT TO SCALE THIS CONFORMS TO WISCONSIN ADMINISTRATIVE CODE A-E 5.02

SURVEYOR'S AFFIDAVIT:
 STATE OF WISCONSIN)
GRANT COUNTY) SS

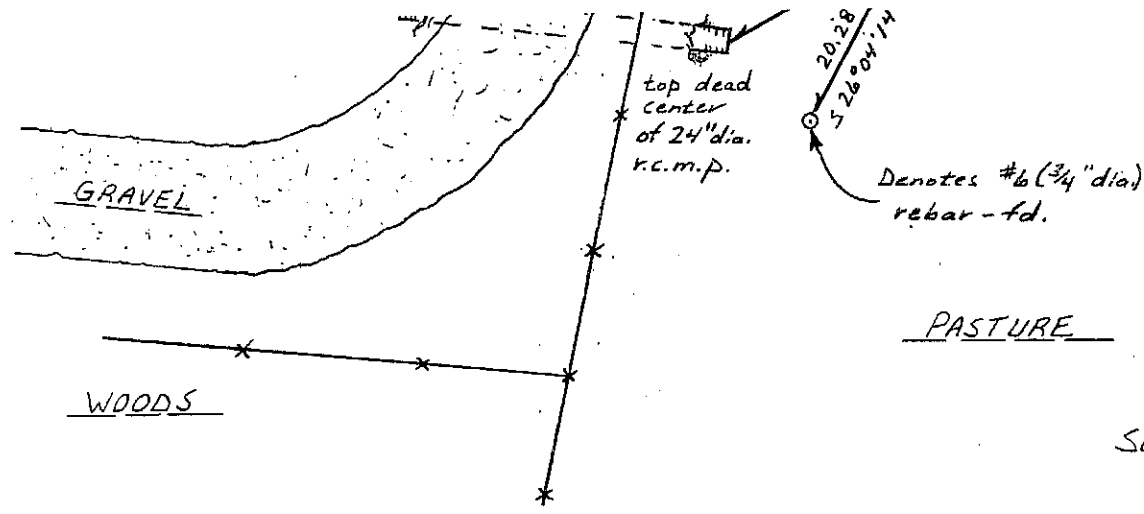
I hereby certify that I, KEITH E. DALRING, have complied with the Wisconsin State Statutes, Statutes of the United States, and the rules and regulations made by the Secretary of the Interior in the location of the corner shown above.

DATE OF SURVEY: FEB 1 1990 Keith E. Dalring
 REGISTERED LAND SURVEYOR
#5-1989



D. F. BURBACH MUNICIPAL & CIVIL ENGINEERS

5992 STATE HIGHWAY 80 SOUTH • P.O. BOX 721 • PLATTEVILLE, WISCONSIN 53818 • (608) 348-3262



SCALE: 1" = 20'