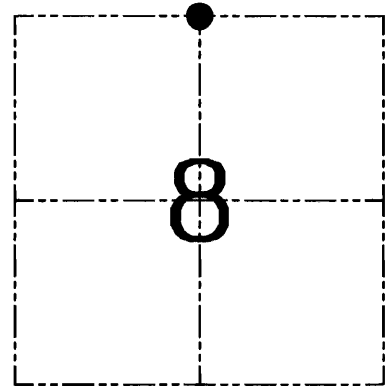


Section 8, Town 7 North Range 3 West, Town of Marion

CERTIFICATE

I, Larry L. Austin, do hereby certify that the corner location on this record was determined by me and/or under my direct supervision and that this U.S. public land survey monument record is correct and complete to the best of my knowledge and belief.

Larry L. Austin
Larry L. Austin, S-1903



● = CORNER LOCATION

HISTORY OF CORNER ESTABLISHMENT

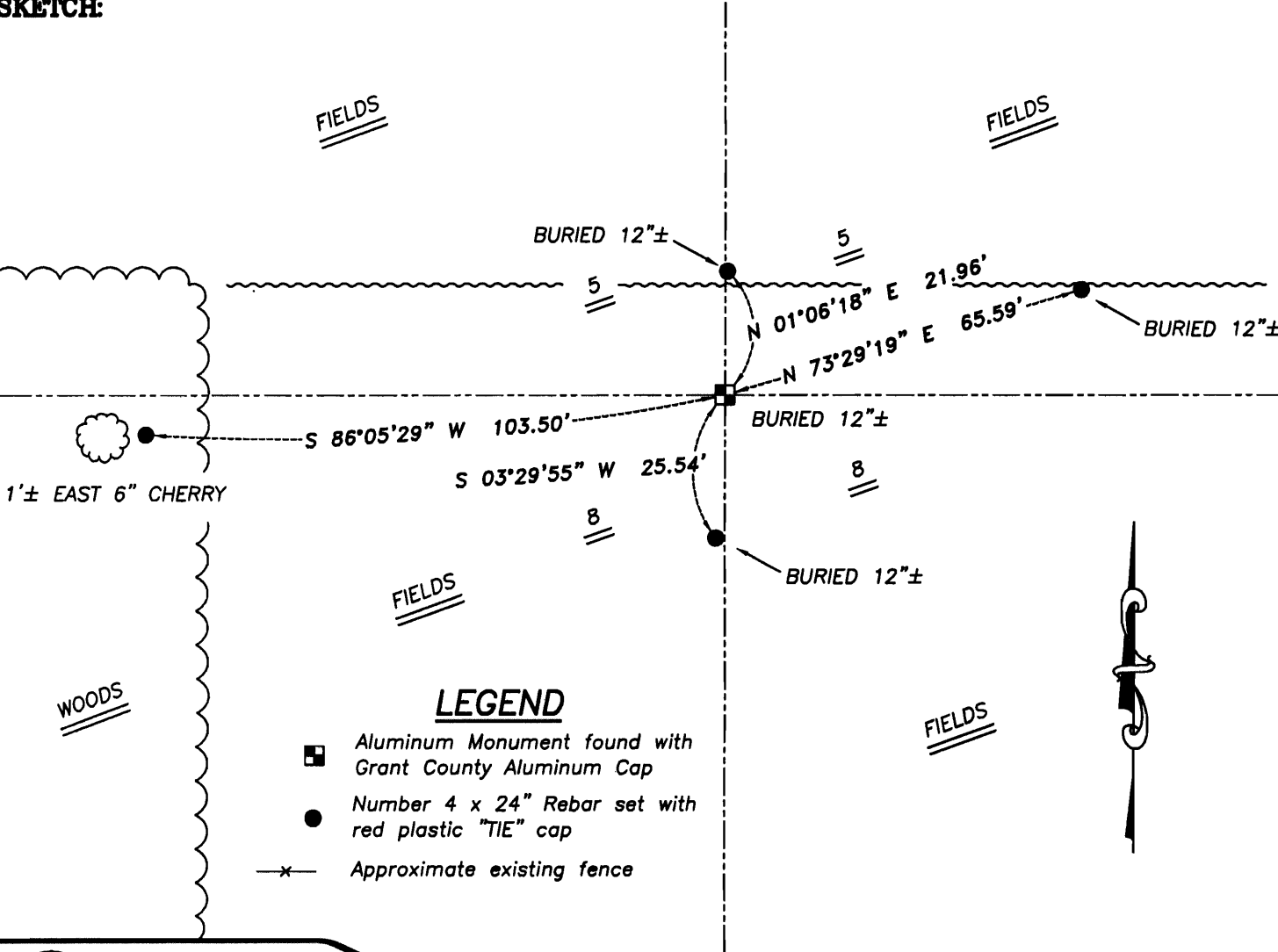
Corner was originally set in the first quarter of 1832 by Harvey Parke. In 1998 I set a Grant County Aluminum monument. No other record of the corner was found.

DESCRIPTION OF CORNER EVIDENCE FOUND

I found the Grant County Aluminum monument and accepted it's location after an EDM traverse of the area.

DESCRIPTION OF CORNER AND WITNESS MONUMENTS, references and accessories used to perpetuate the original or re-established location of this corner. Witnesses to corner location Bobby Sedgwick & Brad Digman & Shane Austin

SKETCH:



- LEGEND**
- Aluminum Monument found with Grant County Aluminum Cap
 - Number 4 x 24" Rebar set with red plastic "TIE" cap
 - x- Approximate existing fence

SKETCH NOT TO SCALE