

73027

U.S. PUBLIC LAND SURVEY MONUMENT RECORD - GRANT COUNTY, WI

Section 9, Town 7 North Range 3 West, Town of Marion (a)

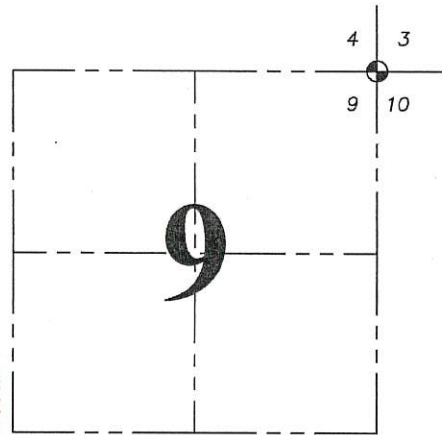
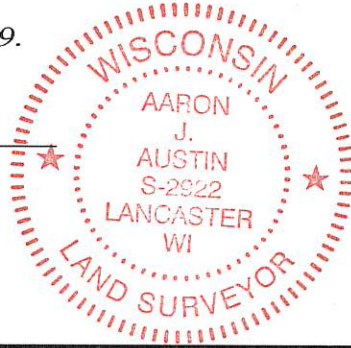
NOTE: This form is intended and designed to fulfill all requirements of the Wisconsin Administrative Code Chapter A-E 7.08, U.S. Public Land Survey Monument Record (3) (a) (b) (c) (d) (e) (f) (g) (h) (i).

CERTIFICATE: (i)

I, Aaron J. Austin, Wisconsin Professional Land Surveyor, do hereby certify that the corner location on this record was determined by me and/or under my direct supervision and that this U.S. Public Land Survey Monument Record is correct and complete to the best of my knowledge and belief.

Dated this 24th day of April, 2019.

Aaron J. Austin
Aaron J. Austin, S-2922



⊕ = CORNER LOCATION

Grant County Coordinates:
NAD 83 (2011)
Northing: 617,340.34
Easting: 814,854.31

HISTORY OF CORNER ESTABLISHMENT:

Original corner was set in 1833 by Harvey Parke.
Keith Dalsing prepared a Survey Monument Record dated 2/1/1990.

DESCRIPTION OF CORNER EVIDENCE FOUND: (b) (f) (g) (h)

I found the monument set by Dalsing. I set four new witness corners after I verified the Monument's location with G.P.S. and E.D.M. methods.

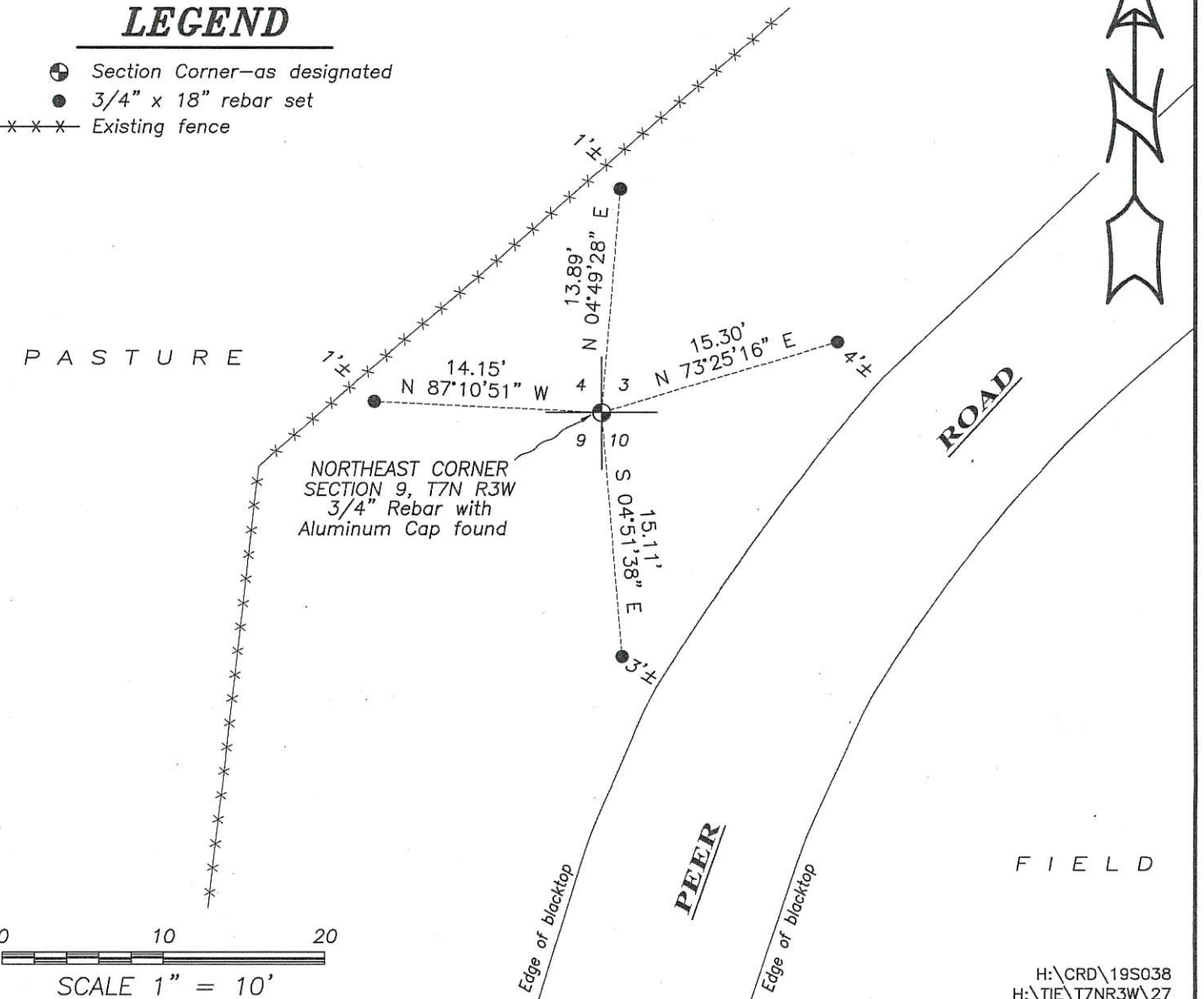
DESCRIPTION OF CORNER AND WITNESS MONUMENTS, references and accessories used to perpetuate the original or re-established location of this corner. (c) (d) (e)

Witnesses to corner location Shane Austin.
Drawn by: Owen Austin

SKETCH:

LEGEND

- ⊕ Section Corner—as designated
- 3/4" x 18" rebar set
- *** Existing fence



U.S. PUBLIC LAND SURVEY MONUMENT RECORD

FEB 18 1990

FILED

CORNER DESCRIPTION: NE CORNER, SECTION 09, T 7 N, R 3 W

STATE PLANE COORDINATES: N _____, E _____

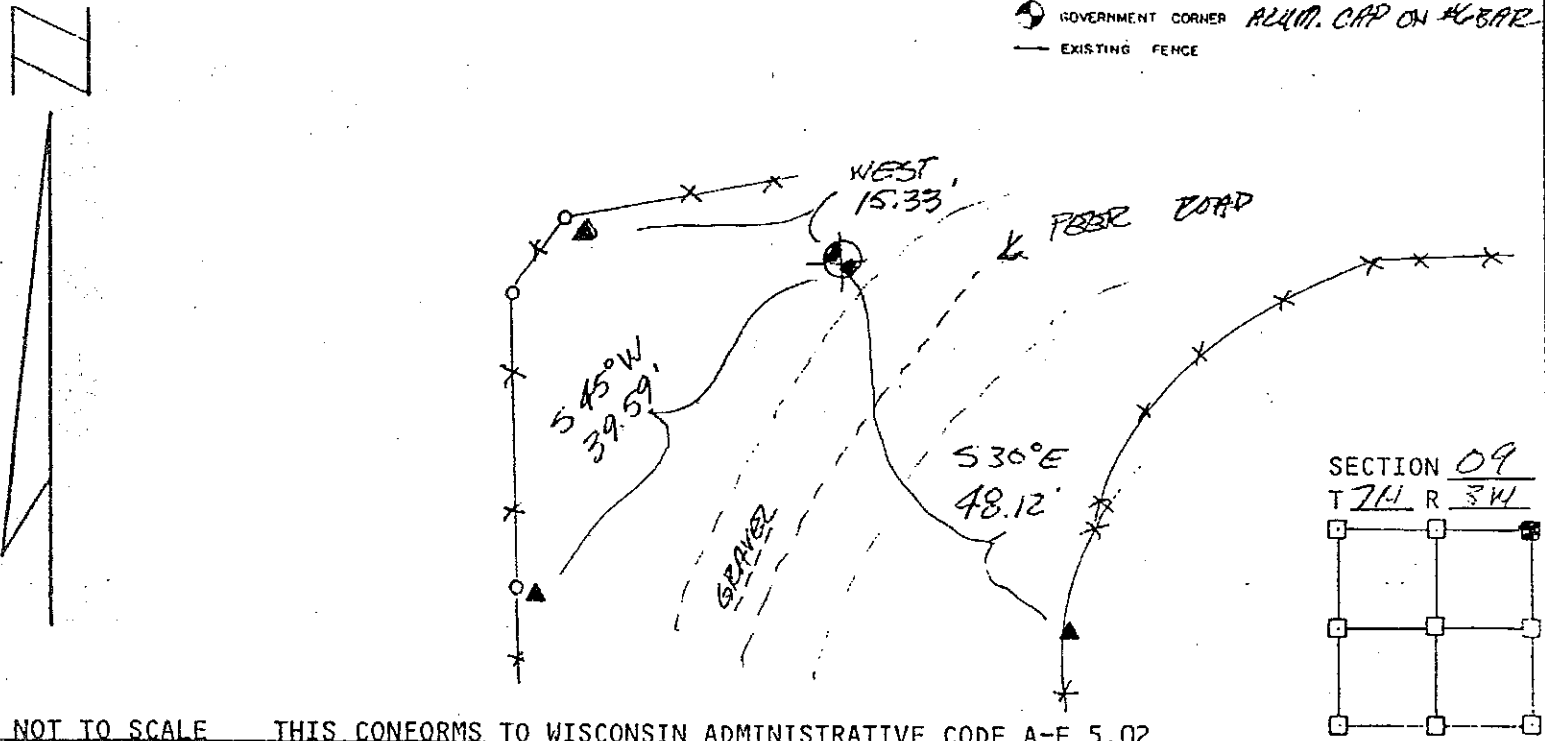
THETA ANGLE: _____

HORIZONTAL DATUM: WISCONSIN STATE PLANE COORDINATE SYSTEM, SOUTH ZONE

EVIDENCE: ACCEPTED OCCUPATIONS AND EDM TRAVERSES OF THE AREA

MONUMENT: FOUND , PLACED
 METHOD OF RESTORATION (RE-ESTABLISHMENT):
 ACCEPTED EXISTING MONUMENT
 ACCEPTED OCCUPATION
 LOST CORNER PROPORTIONATE METHODS
 DATE CORNER SET: JAN. 29, 1990

- LEGEND**
- ▲ SET #6 REBAR, 113 LBS PER LINEAL FT MIN WT
 - SET "X24" IRON PIPE, 113 LBS PER LINEAL FT MIN WT
 - SET 2" X 30" IRON PIPE, 365 LBS PER LINEAL FT MIN WT
 - FOUND 1" IRON PIPE
 - FOUND 2" IRON PIPE
 - FOUND R/R SPIKE
 - SET R/R SPIKE
 - ⊙ GOVERNMENT CORNER ALLM. CAP ON #6 BAR
 - EXISTING FENCE



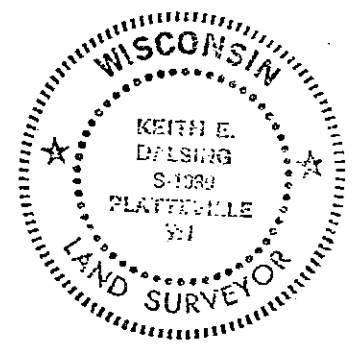
NOT TO SCALE THIS CONFORMS TO WISCONSIN ADMINISTRATIVE CODE A-F 5.02

SURVEYOR'S AFFIDAVIT:

STATE OF WISCONSIN)
GRANT COUNTY) SS

I hereby certify that I, KEITH E. DALRING, have complied with the Wisconsin State Statutes, Statutes of the United States, and the rules and regulations made by the Secretary of the Interior in the location of the corner shown above.

DATE OF SURVEY: FEB. 1, 1990 Keith E. Dalring
 REGISTERED LAND SURVEYOR
 # S-1989



D. F. BURBACH MUNICIPAL & CIVIL ENGINEERS

5002 STATE HIGHWAY 80 SOUTH • P.O. Box 721 • PLATTEVILLE, WISCONSIN 53819 • (608) 348-3262

27