

73024

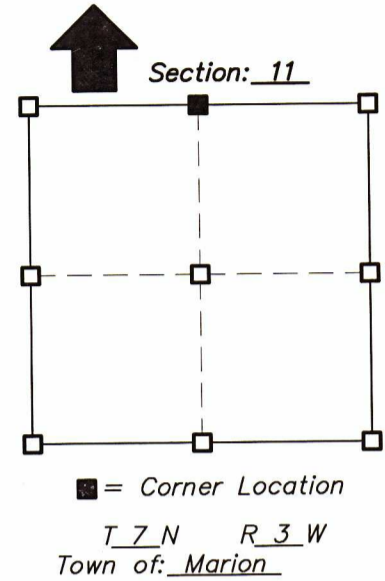
U.S. PUBLIC LAND SURVEY MONUMENT RECORD - GRANT COUNTY, WI

I William R. Bulawa, on the 5th day of May, 2022, I found evidence of the North Quarter Corner of Section 11, T7N, R3W, Fourth Principal Meridian, I hereby certify that the corner location on this record was determined by me and that this U.S. public land survey monument record is correct and complete to the best of my knowledge and belief.

Dated this 11th day of July, 2022

William R. Bulawa

William R. Bulawa, R.L.S. No. S-2167



Seal

History of original corner establishment:

Original survey was done by J.C. Scott.

Description of corner evidence found:

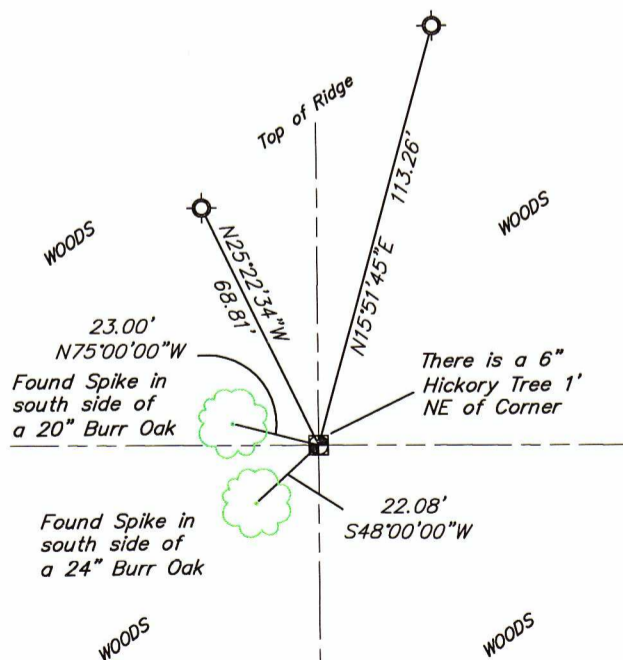
Found existing 3/4" inch iron rod set by Richard Marks on 10/20/1989. I also found 2 of his existing ties to the corner. I set 2 new ties as shown this tie sheet.

Description of corner and witness monuments, references and accessories used to perpetrate the original or re-established location of this corner:

Witnesses to corner location:

William R. Bulawa

Sketch: Not to Scale



LEGEND

- FOUND 3/4" ϕ IRON ROD
- ⊙ SET 3/4" ϕ IRON ROD

Horizontal: NAD 83 (2011)

Corner	North (Y)	East (X)	Elevation (Z)	Zone
Grant Co. Coord.	617291.6	822820.8		

RECEIVED

73024

By Land Information Office at 4:10 pm, Feb 18, 2020

OCT 20 2019

U.S. PUBLIC LAND SURVEY MONUMENT RECORD

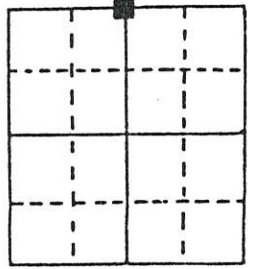
Note: This form is intended and designed to fulfill all requirements of Wisconsin Administrative Code, Chapter A-E 5.02, U.S. Public Land Survey Monument Record (3) (a) (b) (c) (d) (e) (f) (g) (h) (i). An additional sheet may be added if necessary to conform with said requirements.

(a) Corner location: Township 7 North

Range 3 East/West

Town/City/Village Marion

County Grant

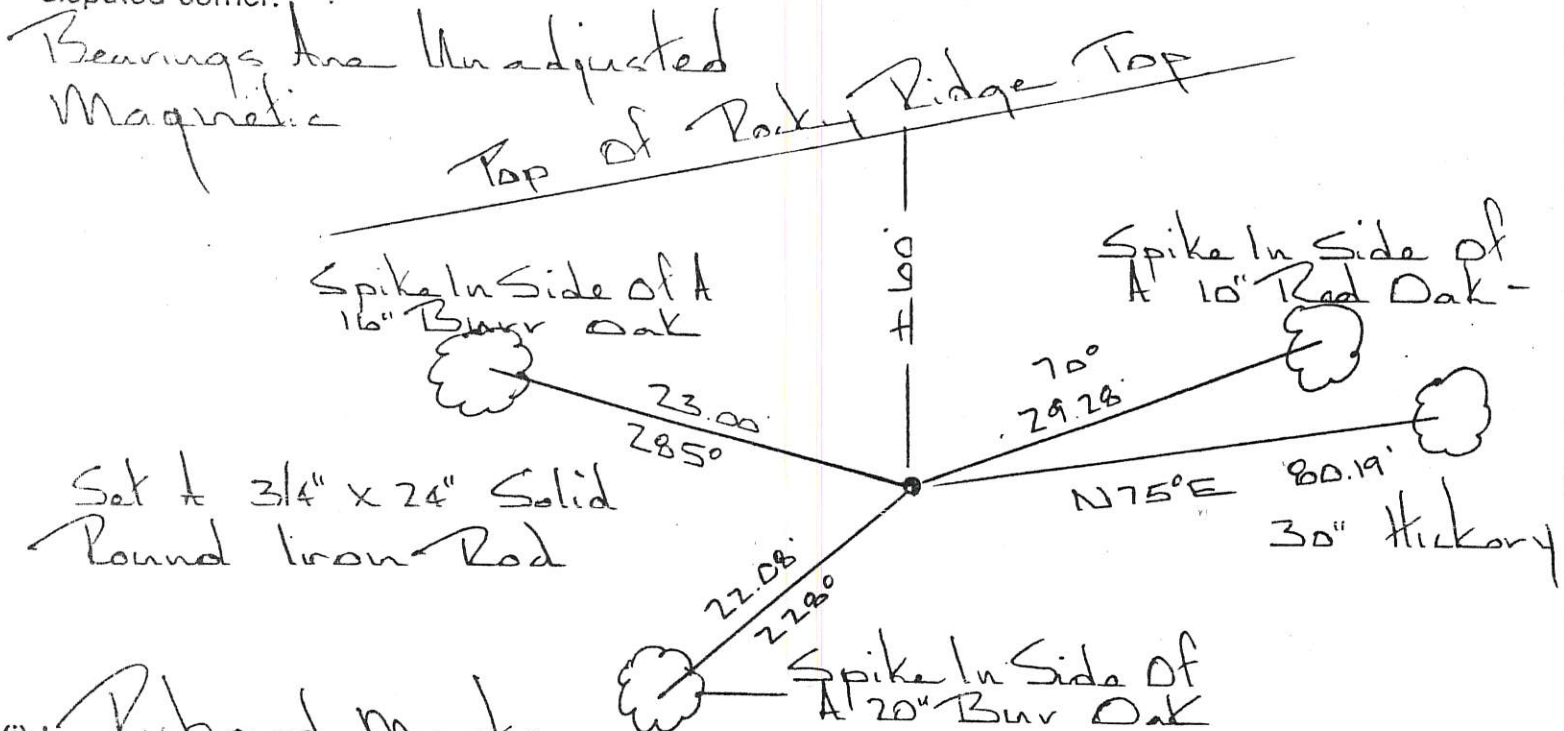


Section 11

(b) (f) (g) (h) Description of monument found at this corner and if it was accepted, state all evidence (material, testimonial, occupational, plats, records, other monuments) used as a basis for accepting. If not accepted or if nothing was found, state evidence used as basis for establishing location. If reestablished through lost corner proportionate methods, indicate all monuments, distances and directions used to establish.

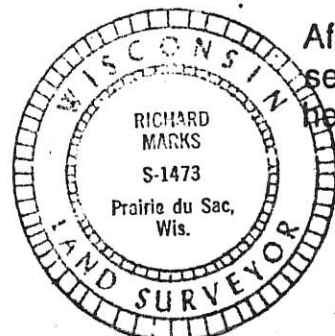
Reset Corner From Subsequent Bearing Tree Made By J.C. Scott And Shown On Certificate of Survey Dated December 12, 1883 In The Grant County Survey Records. 12" Hickory N75°E 80.19' In 1883. Tree is now hollow but still living and about 30" in diameter.

(c) (d) (e) Plan view of corner with ties to at least 4 witness monuments. If in disagreement with previously established corner, show the distances between the two corners and also indicate the ties to the disputed corner.



(i) Richard Marks
(type or print name) certify that the corner location on this record was determined by me or under my direction and control and that this U.S. Public Land Survey Monument Record is correct and complete to the best of my knowledge and belief.

Signature [Signature] Date 10/20/89



Affix seal here

24