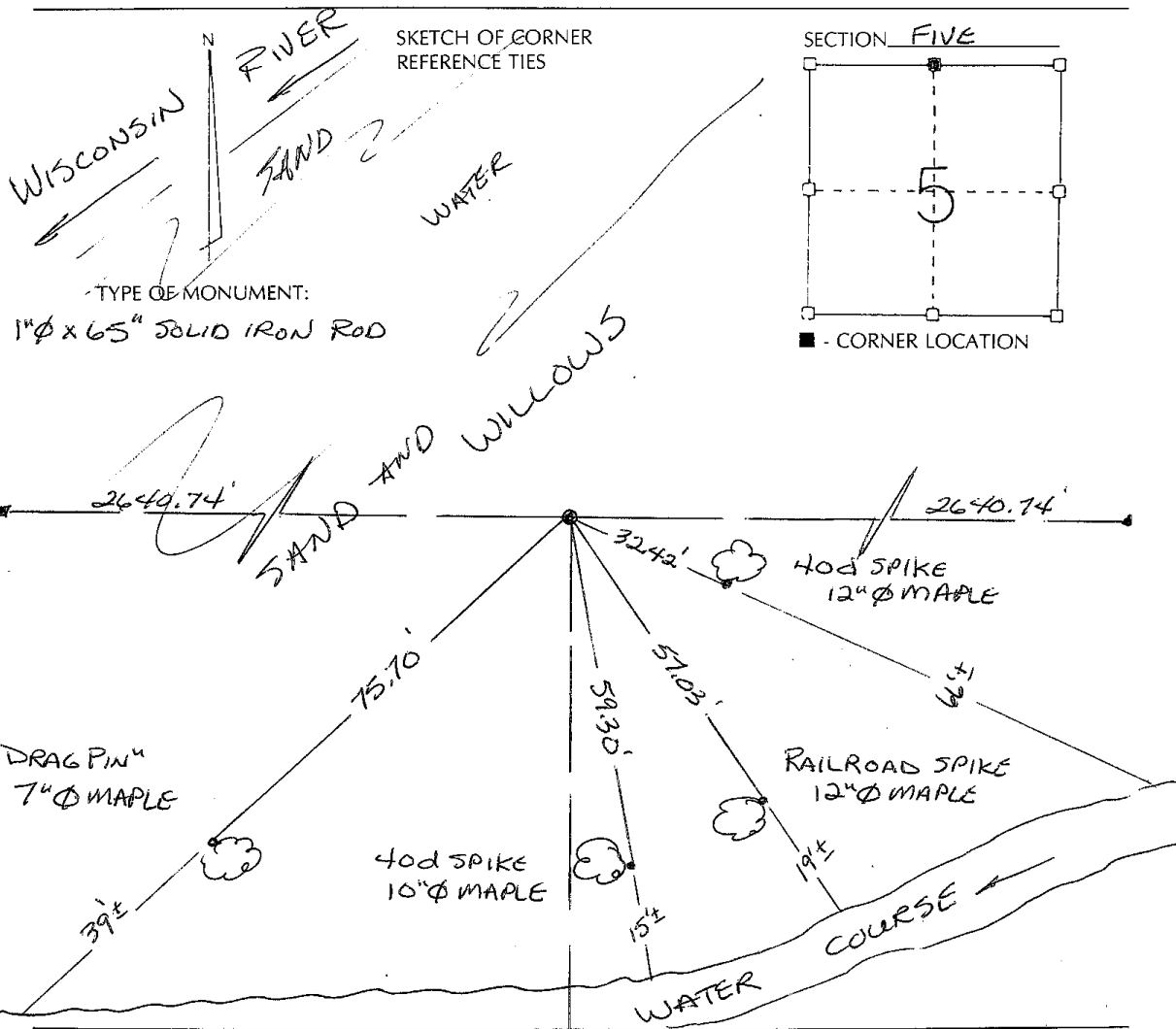


RECORD OF CORNER MONUMENTATION

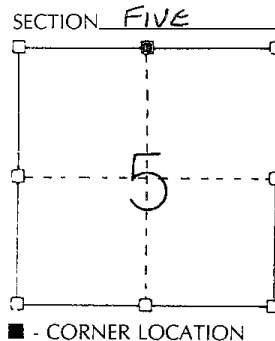
N/4 CORNER SECTION 5 TOWNSHIP 7 N RANGE 3 West
GRANT COUNTY, WISCONSIN

STATE PLANE COORDINATES OF _____
(Y) NORTH _____ ELEVATION _____
(X) EAST _____

HORIZONTAL DATUM: WISCONSIN STATE PLANE COORDINATE SYSTEM, SOUTH ZONE



TYPE OF MONUMENT:
1" ϕ x 65" SOLID IRON ROD



SURVEYOR'S CERTIFICATE
(STATE OF WISCONSIN)

I HEREBY CERTIFY THAT DURING THE PERFORMANCE OF A SURVEY FOR MICHAEL S. NICE AND LYLE BENDER ON OR ABOUT MARCH 2002, WE DID TRAVERSE THE NORTH LINE OF SECTION 5 FROM THE NE CORNER TO THE NORTH-WEST CORNER WITH A TOTAL STATION. THE N/4 CORNER WAS ESTABLISHED ON LINE AND EQUIDISTANT FROM THE NW AND NE CORNERS. IT WAS MONUMENTED AND TIED AS SHOWN ABOVE FOR THE PERPETUATION THEREOF.

DATED THIS 3rd DAY OF
February 2003.

Terry L. Cornell
REGISTERED LAND SURVEYOR
S-1905

