

RECORD OF CORNER MONUMENTATION

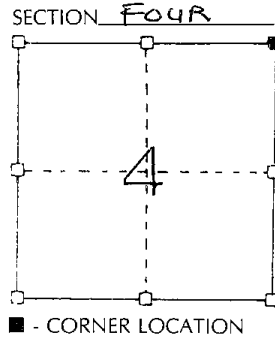
NORTHEAST CORNER SECTION 4 TOWNSHIP 7 N RANGE 3 WEST
GRANT COUNTY, WISCONSIN

STATE PLANE COORDINATES OF _____
(Y) NORTH _____ ELEVATION _____
(X) EAST _____

HORIZONTAL DATUM: WISCONSIN STATE PLANE COORDINATE SYSTEM, SOUTH ZONE

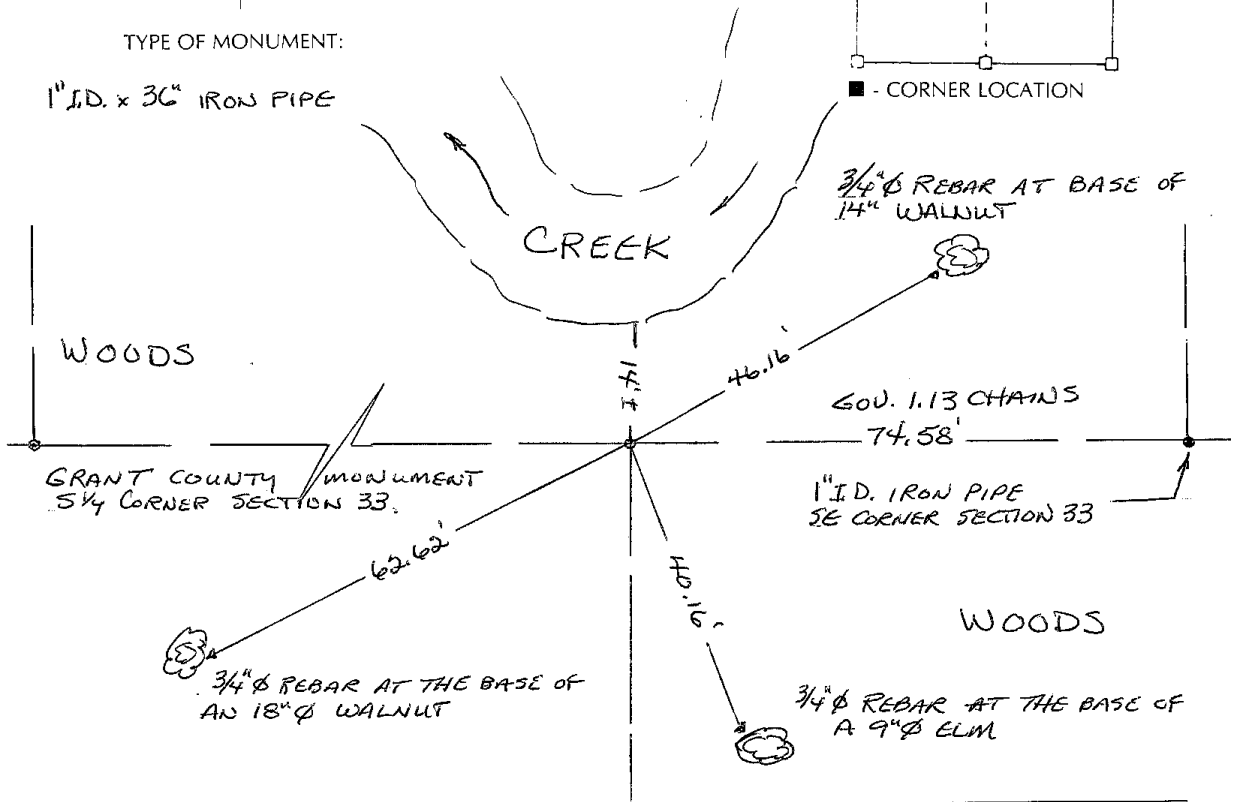


SKETCH OF CORNER REFERENCE TIES



TYPE OF MONUMENT:

1" I.D. x 36" IRON PIPE



SURVEYOR'S CERTIFICATE
(STATE OF WISCONSIN)

I HEREBY CERTIFY THAT THIS MONUMENT WAS SET ACCORDING TO THE GOVERNMENT NOTES AT 1.13 CHAINS DISTANT FROM THE SOUTHEAST CORNER OF SECTION 33, ON LINE BETWEEN THE SE CORNER OF SECTION 33 AND THE SE CORNER OF SECTION 4. TIES AS SHOWN ABOVE WERE SET FOR THE PERPETUATION OF THIS CORNER.

DATED THIS 3rd DAY OF February 2003.

Terry L. Cornell
REGISTERED LAND SURVEYOR
S-1905

