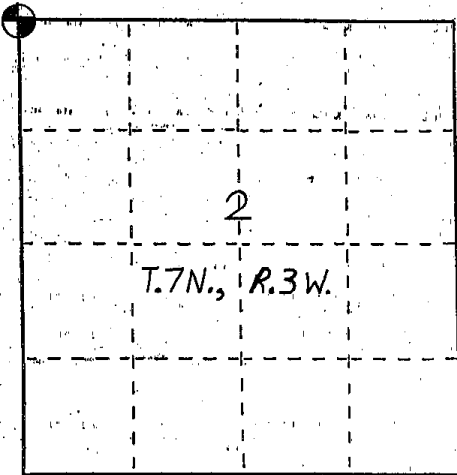


U. S. PUBLIC LAND SURVEY MONUMENT RECORD

INSTRUCTIONS: This record shall show the location of the corner and shall include all of the following nine elements (a through i).

- (a) Identify the corner by reference to the U.S. public land survey system.
- = Corner monument restored.

The Northwest Corner of Section 2, Town 7 North, Range 3 West, Marion Township, Grant County, Wisconsin.



- (b) Describe any record evidence, monument evidence, occupational evidence, testimonial evidence or any other material evidence you considered, and whether the monument was found or placed.

Grant County Aluminum Monument found and accepted as shown on Austin tie sheet. Monument and corner ties are in danger of being disturbed due to erosion of sand slope to North of corner. New ties were set farther from corner location.

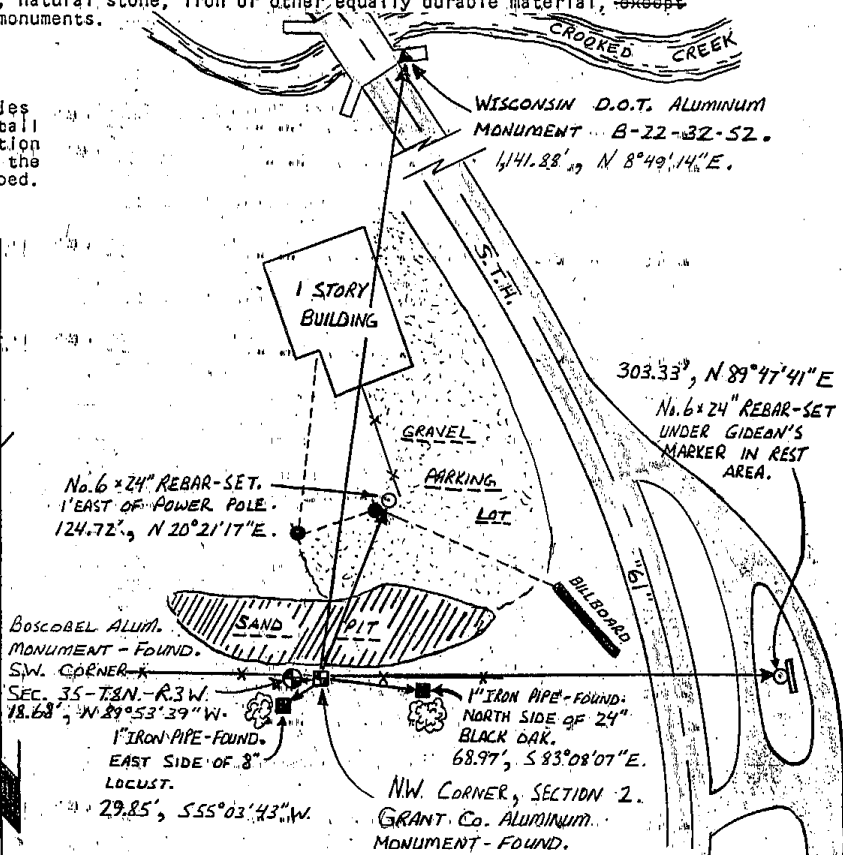
- (c) In the plan view drawing below, provide reference ties to at least 4 witness monuments, or, if the location is within a municipality, to at least 2 witness monuments. (Witness monuments shall be made of concrete, natural stone, iron or other equally durable material, ~~except wood.~~) Describe witness monuments.

- (d) Show a plan view drawing depicting the relevant monuments and reference ties which is sufficient in detail to enable accurate relocation of the corner monument if the corner monument is disturbed. Indicate north.

GRANT COUNTY COORDINATES

x = 820,181.1
y = 622,531.5

Scale: 1" = 100'



e) Describe any material discrepancy between the location of the corner as restored or reestablished and the location of that corner as previously restored or reestablished by distance and direction. Show the discrepancy on the plan view drawing under (d), above. Show the distances between the corner as previously restored or reestablished and (1) the corner as restored or reestablished, and (2) to at least 2 of the witness monuments shown on the drawing in (d), above.

None.

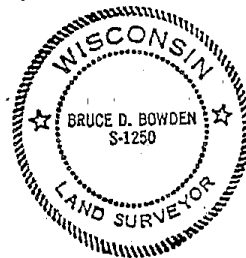
f) Was the corner restored through acceptance of (1) an obliterated evidence location, or, (2) a found perpetuated location?

a) found perpetuated location.

g&h) Was the corner reestablished through lost corner proportionate methods? If so, show the method, including the directions and distances to other public land survey corners used as evidence or used for proportioning in determining the corner location?

No.

Affix Land Surveyor Seal



i) I, BRUCE D. BOWDEN
(type or print name) certify that the corner location shown on this record was determined by me or under my direction and control and that this U.S. Public Land Survey Monument Record is correct and complete to the best of my knowledge and belief.

Signature

Date

Bruce D. Bowden
Aug 12, 1997

GRANT COUNTY

Survey Monument Record

TYPE OF MONUMENT COUNTY MONUMENT SET

STATE PLANE COORDINATES: N _____
E _____

ELEVATION - M.S.L. DATUM: _____

THETA ANGLE: _____

FIELD BOOK: 95-15

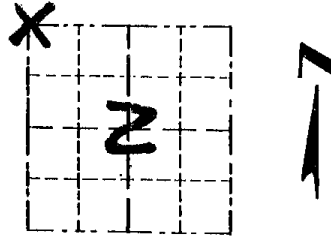
PAGE 6

CORNER NO. 5

SECTION 2

TOWN 7N

RANGE 3W



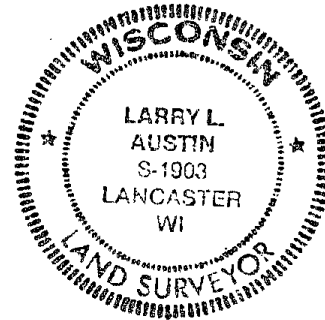
LOCATION
(Indicated by "X")

BASIS FOR MONUMENT LOCATION

(Use reverse side if necessary)

GRANT COUNTY MONUMENT SET ON THE SOUTH LINE OF THE SW 1/4, SEC. 35, T8N, R3W AND AT THE CLOSING CORNER DISTANCE OF 28 LINKS FROM THE SW COR. SEC 35-T8N, R3W.

SEAL:



VERIFIED BY EDM TRAVERSE OF THE AREA

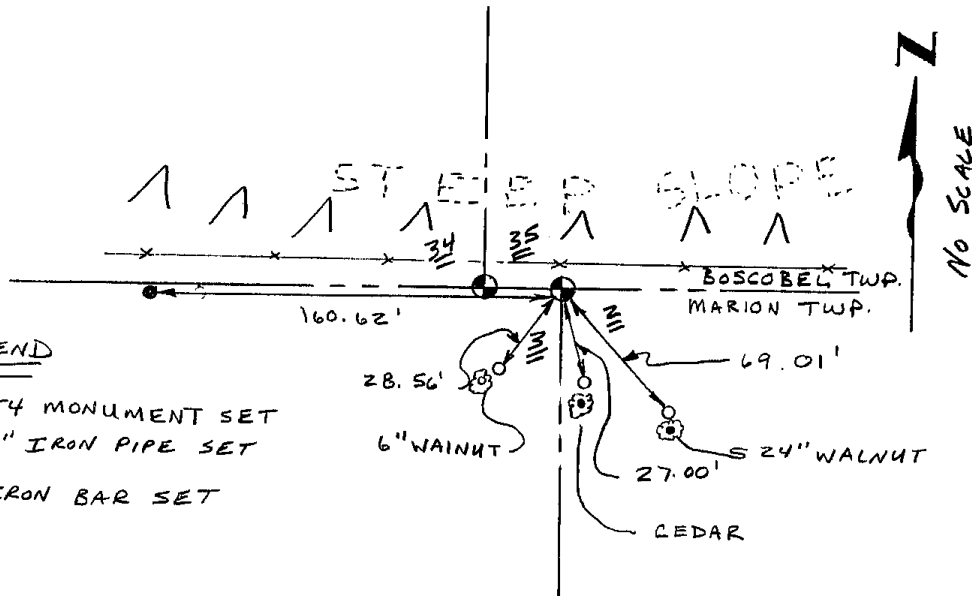
CERTIFIED CORRECT

Larry L. Austin
Registered Land Surveyor

DATE: 2/16/96

TIE SKETCH

Show at least three (3) ties and monument



LEGEND

- ⊙ COUNTY MONUMENT SET
- 1"X12" IRON PIPE SET
- 3/4" IRON BAR SET