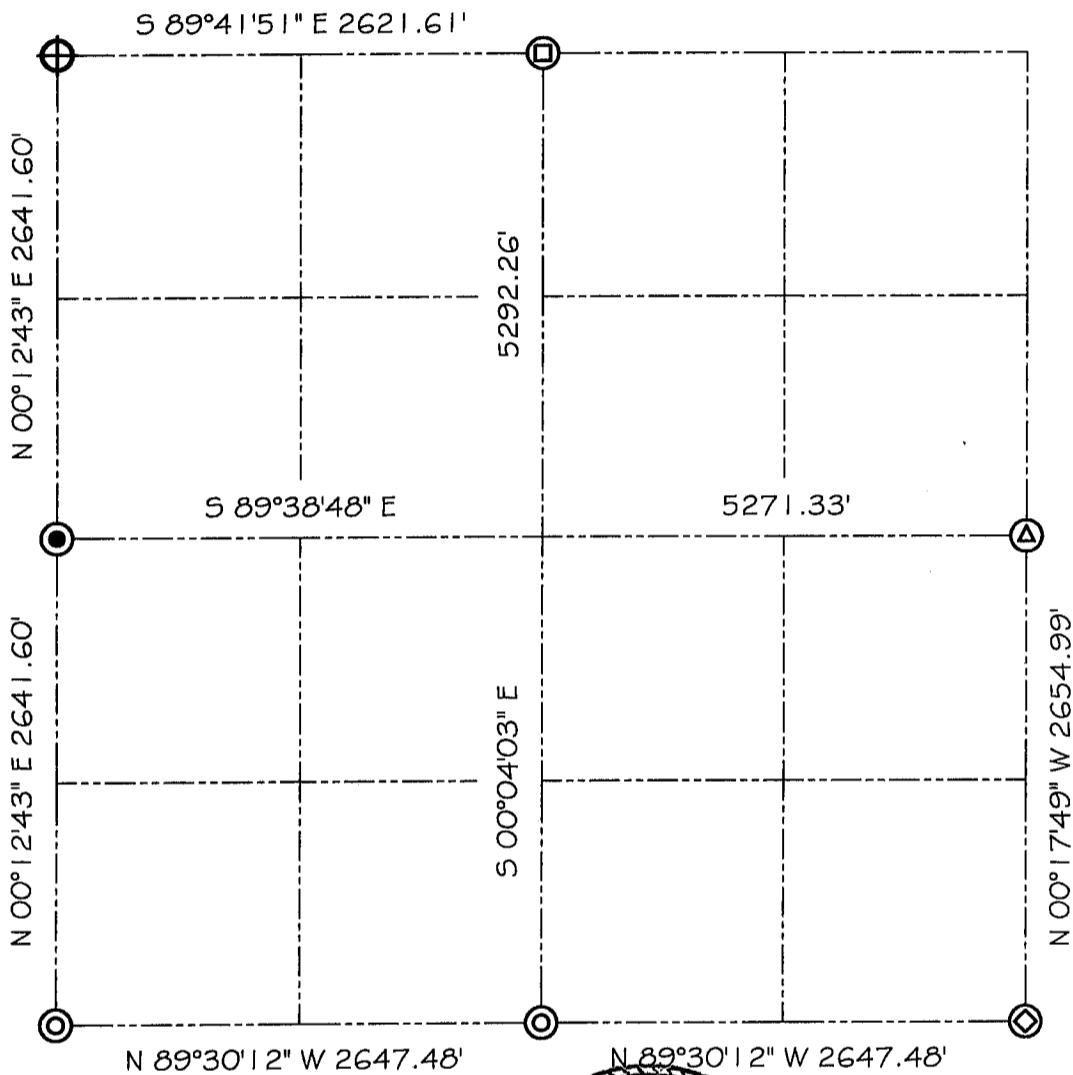


GRANT COUNTY SECTION SUMMARY

$\frac{36}{\text{SECTION}} - \frac{7N}{\text{TOWN}} - \frac{2W}{\text{RANGE}}$



LEGEND

- ⊙ NO. 7 X 30" REBAR SET WITH GRANT COUNTY ALUMINUM CAP
- ⊕ ALUMINUM MONUMENT FOUND
- ⊙ NO. 6 REBAR FOUND
- ⊠ 1 1/4" STEEL ROD FOUND
- △ 1" IRON PIPE FOUND
- ◊ 1" SQUARE ROD FOUND

NOTE:

Relationships of all section corners to other section corners shall be shown hereon by bearing and distance or grid coordinates
Show or describe bearing reference



Bearings referenced to the West line of the Southwest 1/4 of Section 36, which is assumed to bear N 00° 12' 43" E.