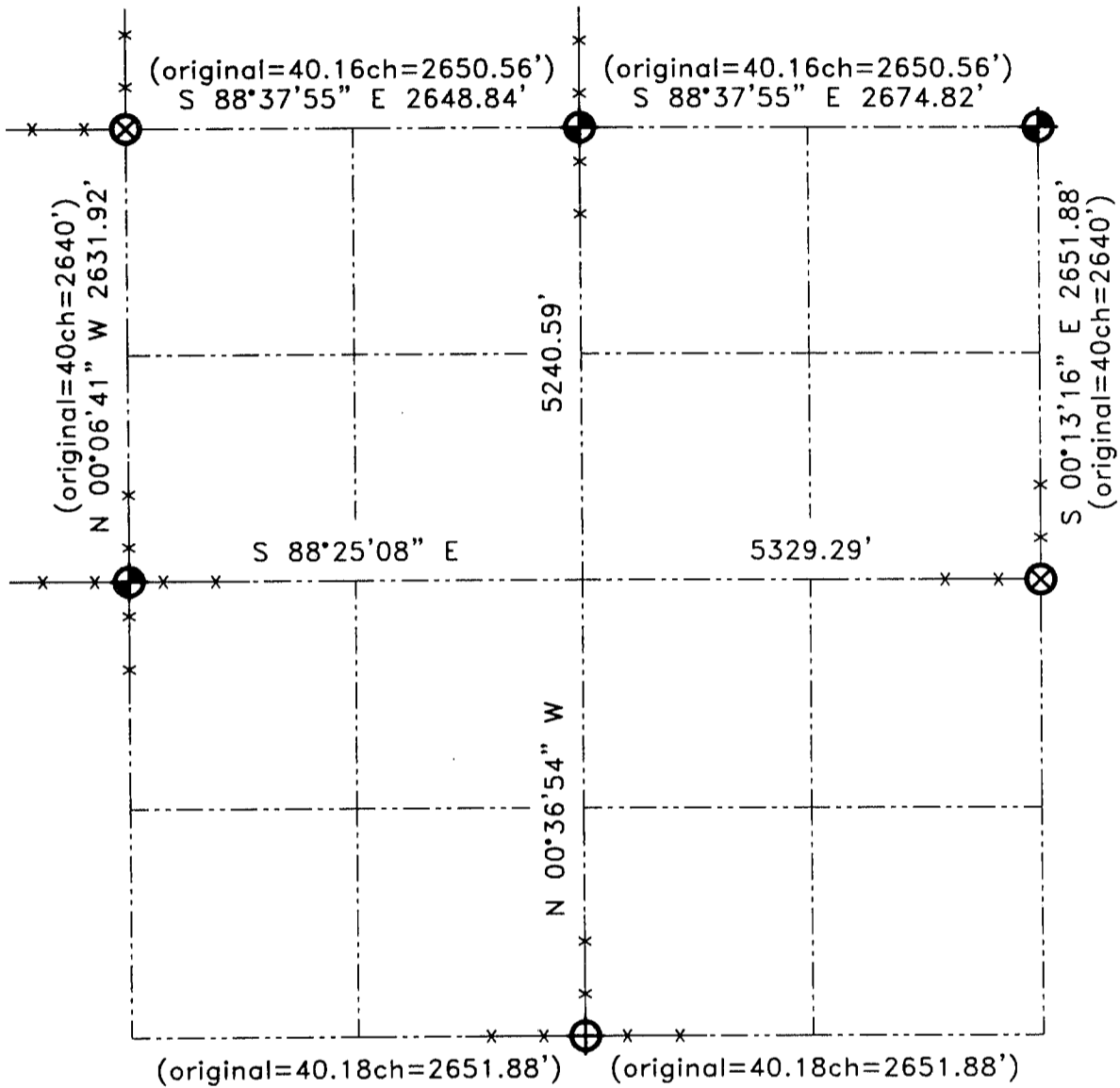


GRANT COUNTY SECTION SUMMARY

16
SECTION
-
7N
TOWN
-
2W
RANGE



LEGEND

- Number 8 x 30" rebar set with Grant County Aluminum Cap
- Number 8 rebar found with Grant County Aluminum Cap
- Number 7 rebar found with Grant County Aluminum Cap
- Recorded as
- Appx existing fence location

NOTE
 Relationships of all section corners to other section corners shall be shown hereon by bearing and distance or grid coordinates. Bearing reference below.



Bearings referenced to the East-West Quarter line of Section 16, which is assumed to bear S 88°25'08" E.

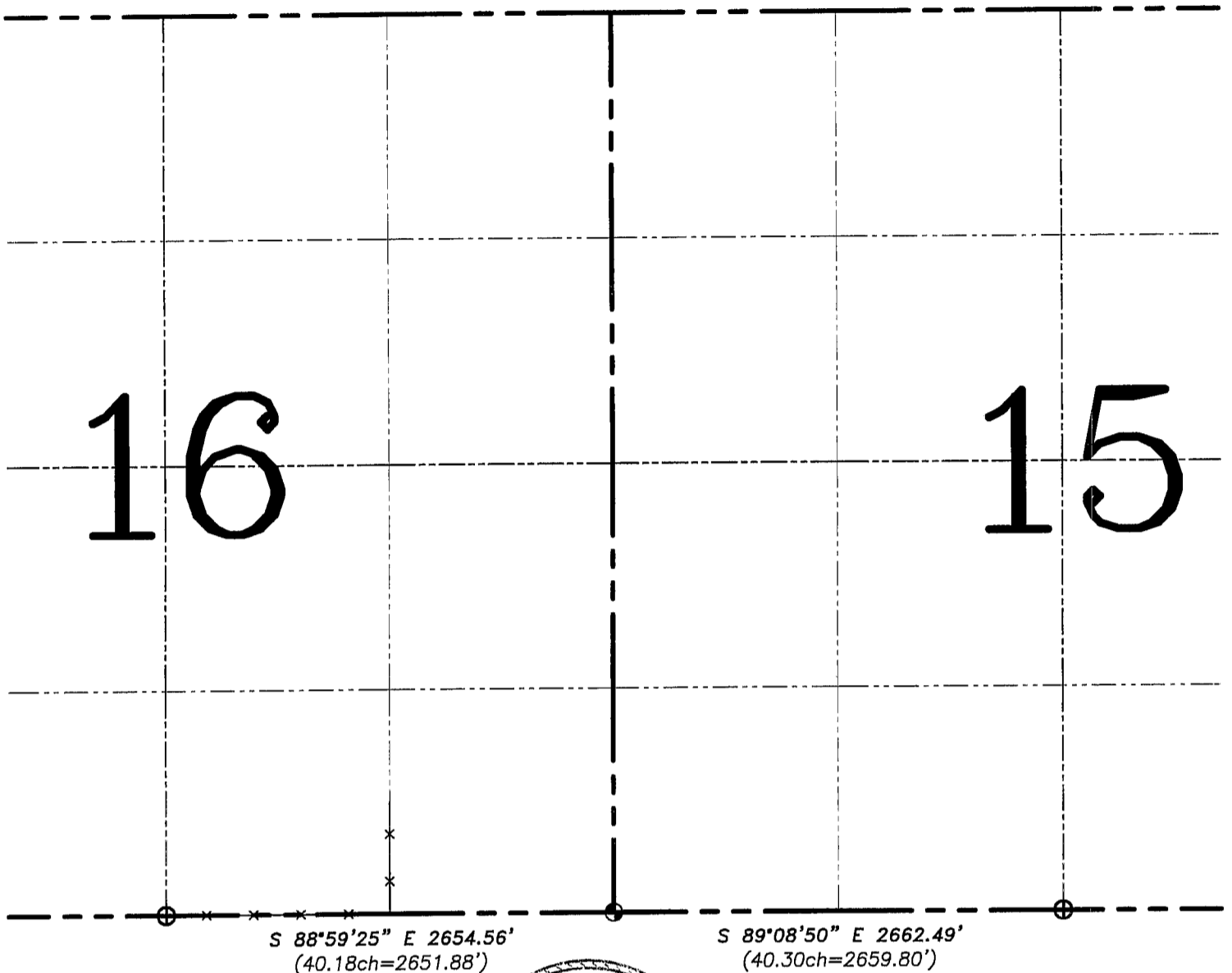
AUSTIN ENGINEERING, LLC
 4211 HWY 81 E, LANCASTER, WI 53813
 PHONE 608-723-6363 FAX 608-723-6702

FIELDBOOK: SDR33, 2042
 G:\T7NR2W\02
 G:\SWA\TIE\T7NR2W\16SUM

DRAWN BY: SW AUSTIN
 APPROVED: LL AUSTIN
 CREW: BS-SB-SA-TF
 SHEET 1 OF 1

JUN 14 2001

U.S. PUBLIC LAND SURVEY MONUMENT RECORD – GRANT COUNTY, WI
Summary of Section 16, Town 7 North, Range 2 West, Town of Hickory Grove



LEGEND

- ⊕ No. 8 rebar found with Grant County Aluminum Cap
- ⊗ No. 8 x 30" rebar set with Grant County Aluminum Cap – wt=2.67#/l.f.
- () Recorded as
- x— Approximate location of existing fence

Relationship of all section corners to other section corners shall be shown hereon by bearing and distance or grid coordinates. Bearing reference shown below.

Dated this 1st day of February, 2006

Larry L. Austin
 Larry L. Austin S-1903

Bearings referenced to the South line of the SE 1/4 of this Section, which is assumed to bear S 88°59'25" E.

SKETCH NOT TO SCALE



Austin Engineering LLC

4211 HWY 81 E, LANCASTER, WI 53813
 PHONE 608-723-6363 FAX 608-723-6702

JOB NUMBER: 06S001
 FIELDBOOK: TDSR, 2209
 G:\T7NR2W\16A
 H:\TIE\T7NR2W\16SUM

DRAWN BY: SW AUSTIN
 APPROVED: LL AUSTIN